



**A Tour of the Past:  
Barking Sands Army Air Force Base  
WWII & 1949:  
Buildings and Structures**

Editor: John Burger  
Hawaii Range Complex Env. Coord.

# A Very Special Thanks

This project is made possible only because of support and contributions from:

Tommy Batis, PMRF self-appointed Historian Extraordinaire

Judith Bowman, Director, Museums Branch, DPTMS, US Army Garrison, Hawaii

John Bennett, Author/Historian and Chronicler

John Martin, Mana Resident, Author and Chronicler

Stephen Banks, Author and Chronicler

DeLoach Cope, VC-66 Pilot

Charlie Edwards, VC-66 Pilot

Arthur Kiplinger, VC-66 Pilot

James Neuman, Historian, CNRH

Stefan Alford ( PMRF PAO) and MC2 Mathew Diendorf (PMRF APWO)

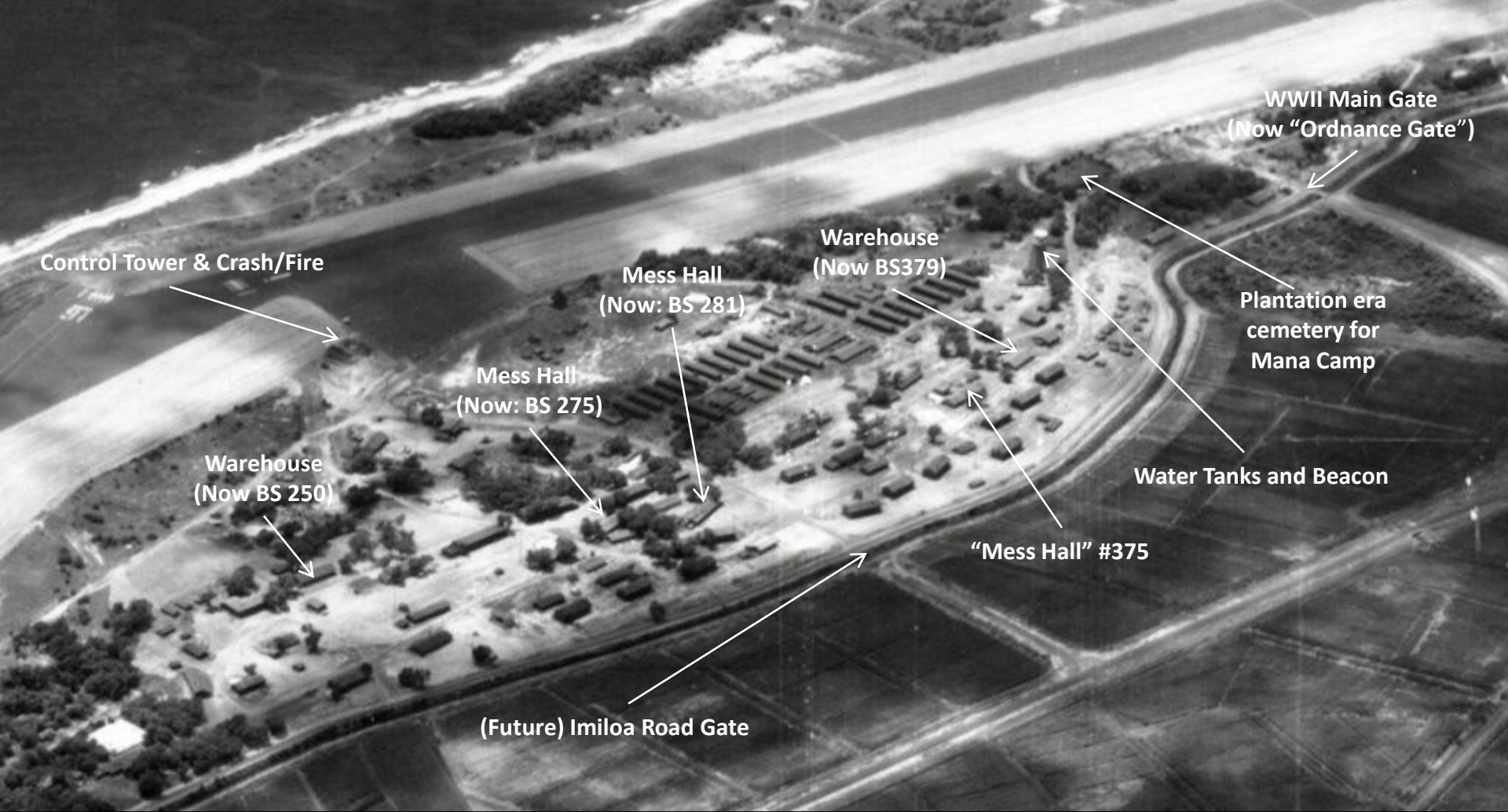
Cultural Resources Staff at NAVFAC Hawaii and NAVFAC Pacific

TEC Inc. /AECOM TS Inc./EDAW Inc. – Joint Venture

15<sup>th</sup> Air Force Wing History Office, Hickam AFB, Pearl Harbor, HI

*AND IN THE FUTURE:*

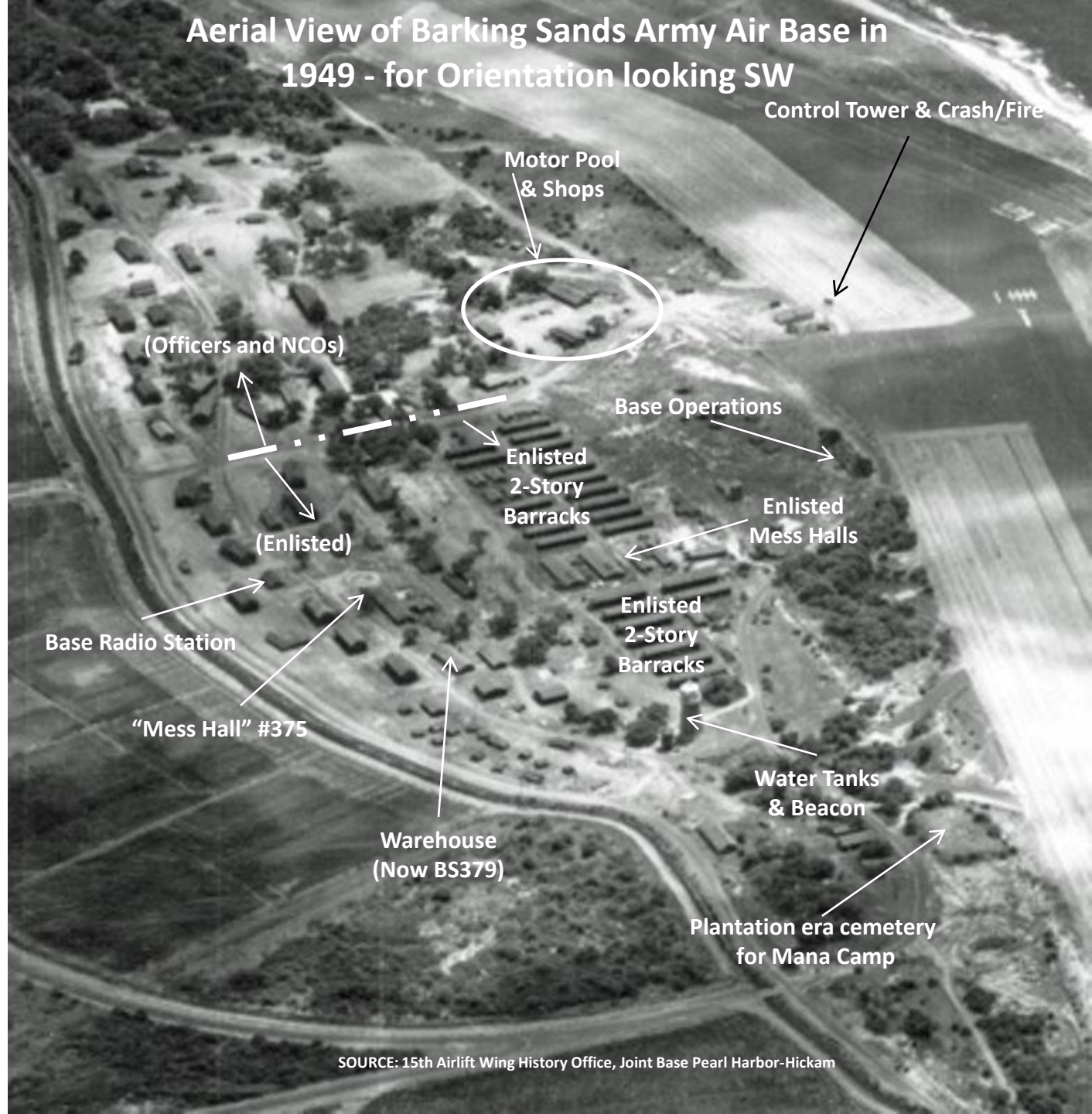
“Contributions from Viewers like You”



**Aerial View of Barking Sands Army Air  
Base in 1949 - for Orientation looking  
NW**

SOURCE: 15<sup>th</sup> Airlift Wing History Office, Joint Base Pearl Harbor-Hickam

# Aerial View of Barking Sands Army Air Base in 1949 - for Orientation looking SW



Control Tower & Crash/Fire

Motor Pool & Shops

(Officers and NCOs)

Base Operations

Enlisted 2-Story Barracks

Enlisted Mess Halls

(Enlisted)

Enlisted 2-Story Barracks

Base Radio Station

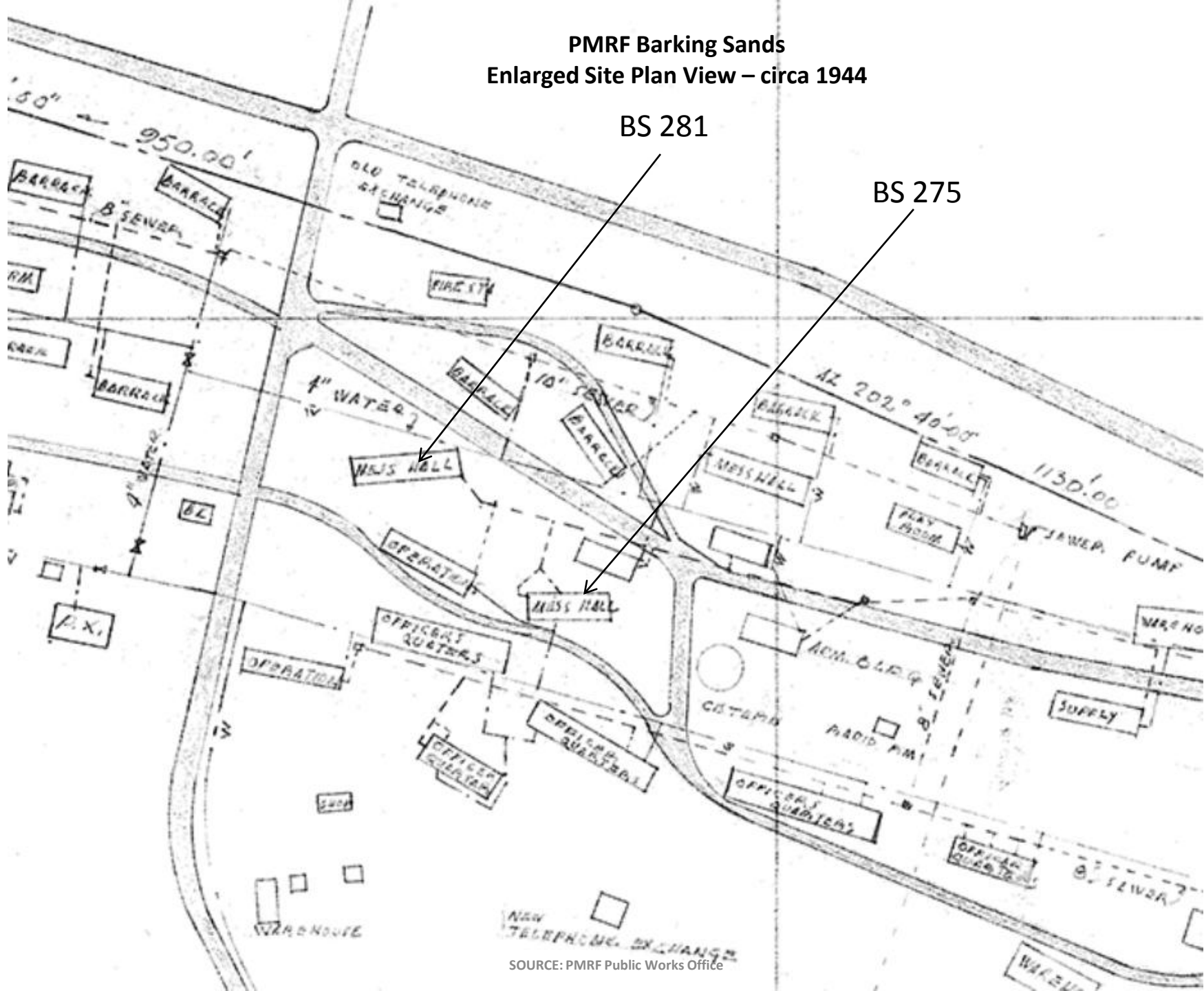
"Mess Hall" #375

Warehouse (Now BS379)

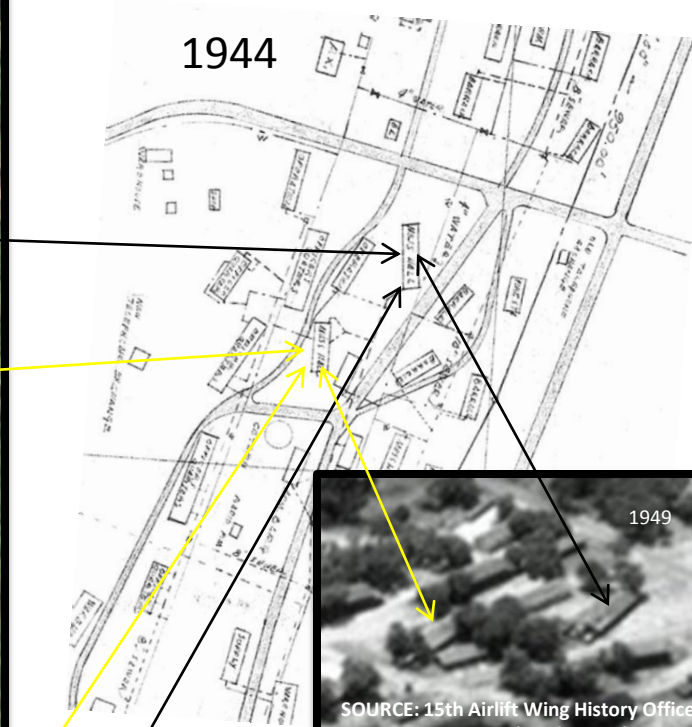
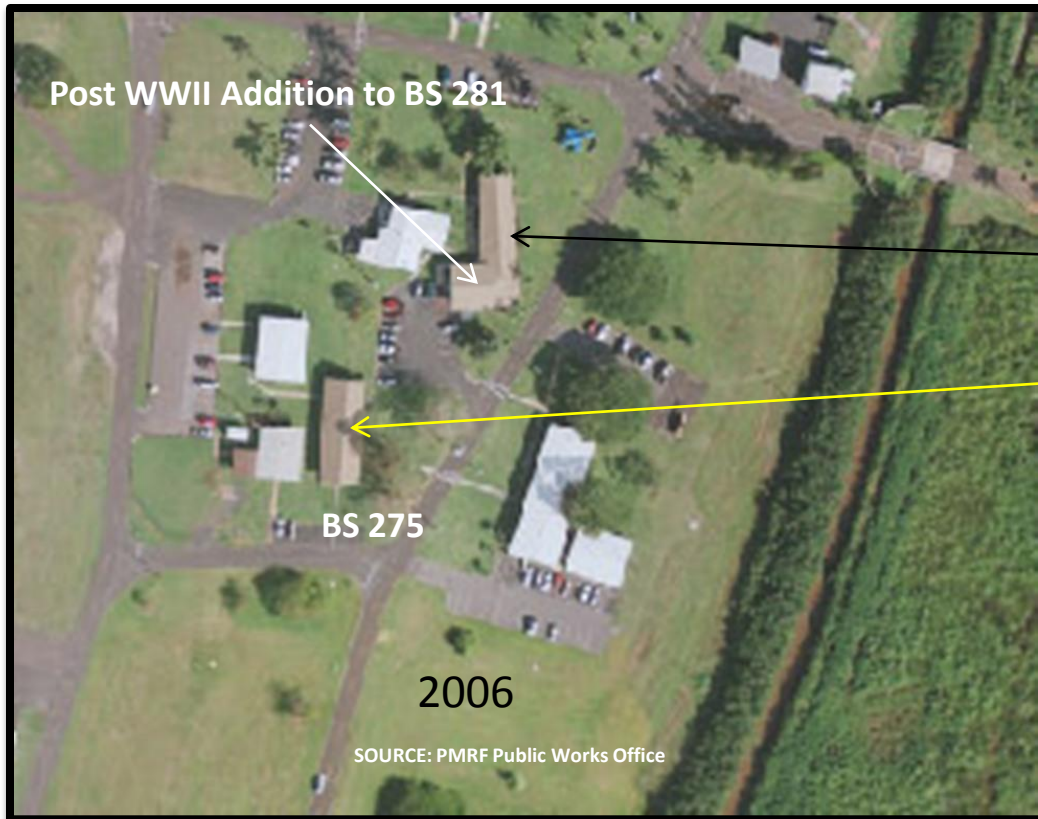
Water Tanks & Beacon

Plantation era cemetery for Mana Camp

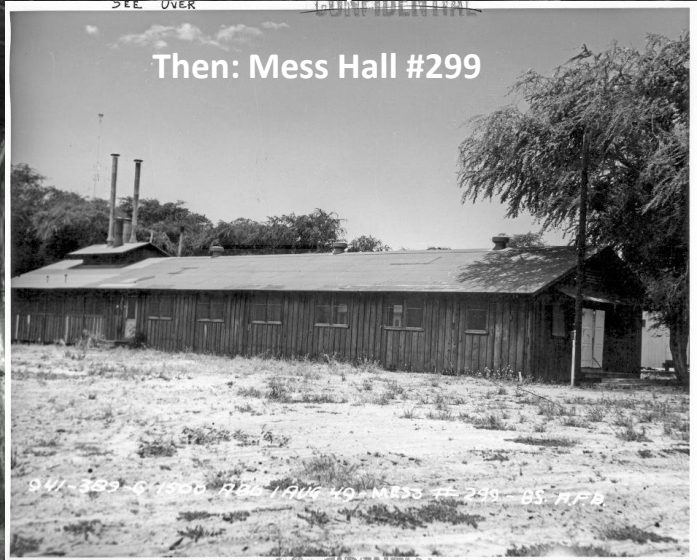
PMRF Barking Sands  
Enlarged Site Plan View – circa 1944



# PMRF Barking Sands



# BARKING SANDS, KAUAI, 1949



Now: BS 281

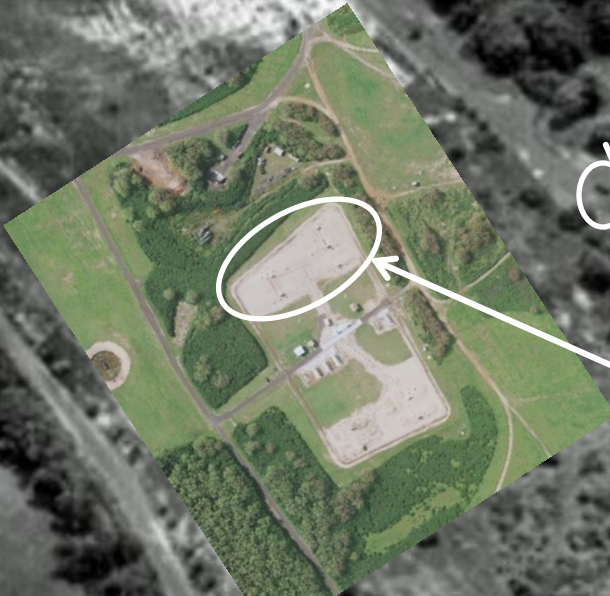
Then: Mess Hall #299

26-04-S-1500 RBG 1 AUG 49-12" 3500 22° 04' N-159° 42' W-BARKING SANDS A.F.B.

SOURCE: B&W: 15th Airlift Wing History Office, Joint Base Pearl Harbor-Hickam  
Color: PMRF Public Works Office and John Burger, PMRF Range Sustainment

# BARKING SANDS, KAUAI, 1949

Fuel  
Dispensing  
Stand  
1949



2006

Fuel Farm

1949

SOURCE: B&W: 15th Airlift Wing History Office, Joint Base Pearl Harbor-Hickam  
Color: PMRF Public Works Office and John Burger, PMRF Range Sustainment



# BARKING SANDS, KAUAI, 1949



Now: 2013

(Rotated since 1949)

Extant Generator piping



Then: 1949

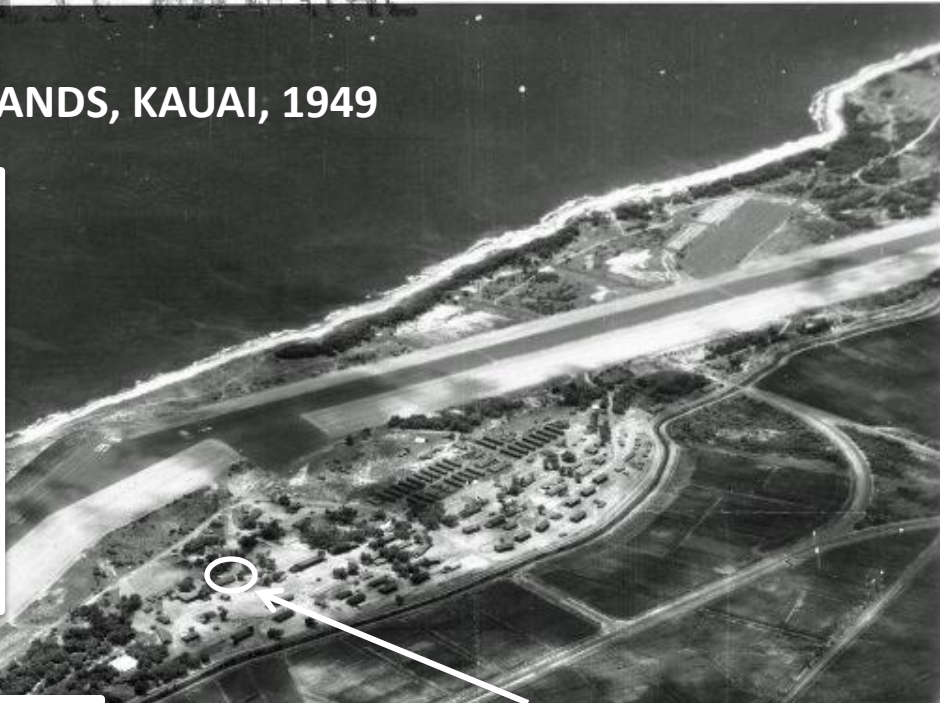
"New" Telephone Exchange

941-397-G 1500 RBG 1 AUG 49 TELEPHONE W.G. EX. BS F.F.B.

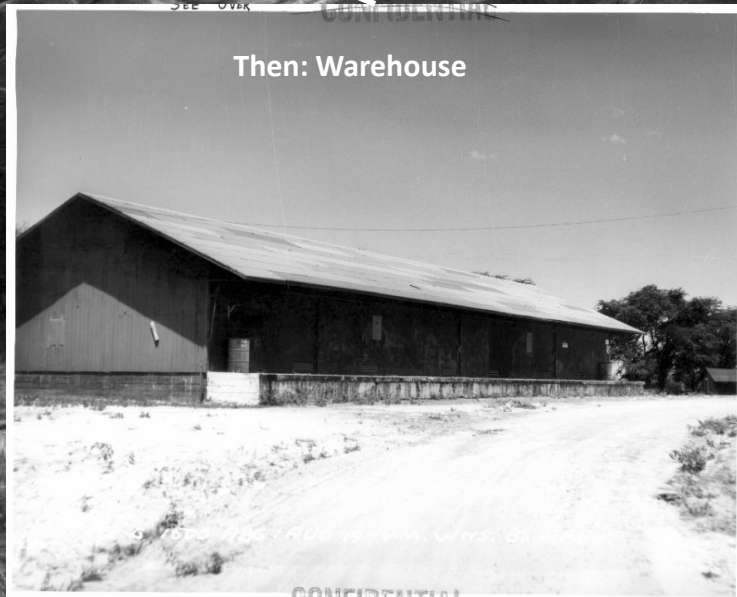


26-0H-S-1500 RBG 1 AUG 49-12" 3500' 22' 04" N-159' 42" W-BARKING SANDS F.F.B.

# BARKING SANDS, KAUAI, 1949



Now: BS 250 (1/2 the building;  
but all of the loading dock)

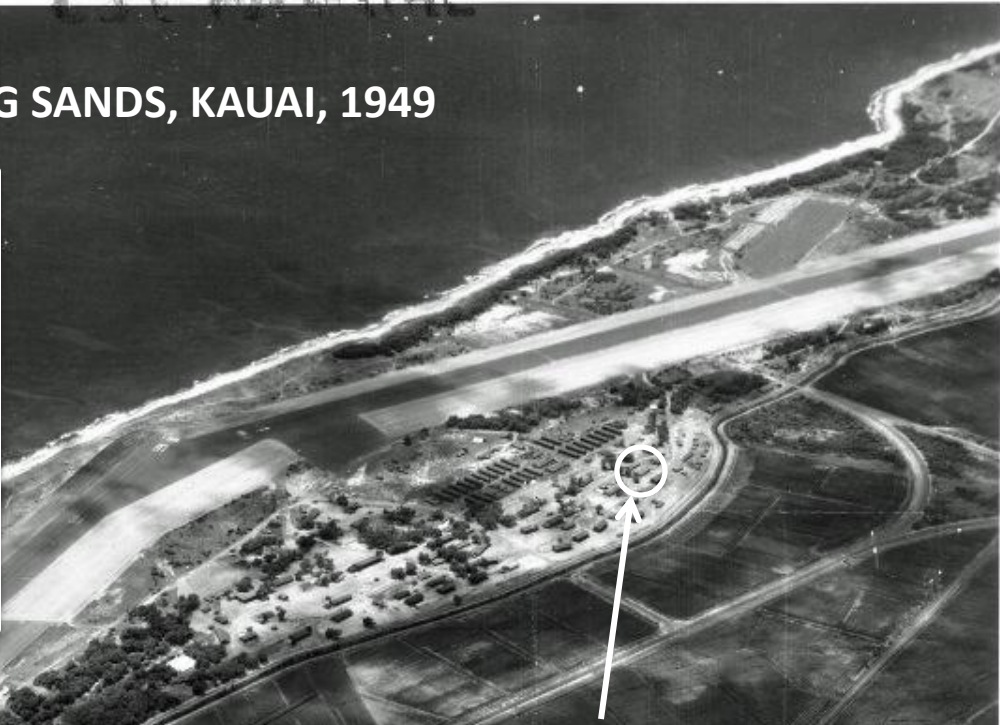


Then: Warehouse

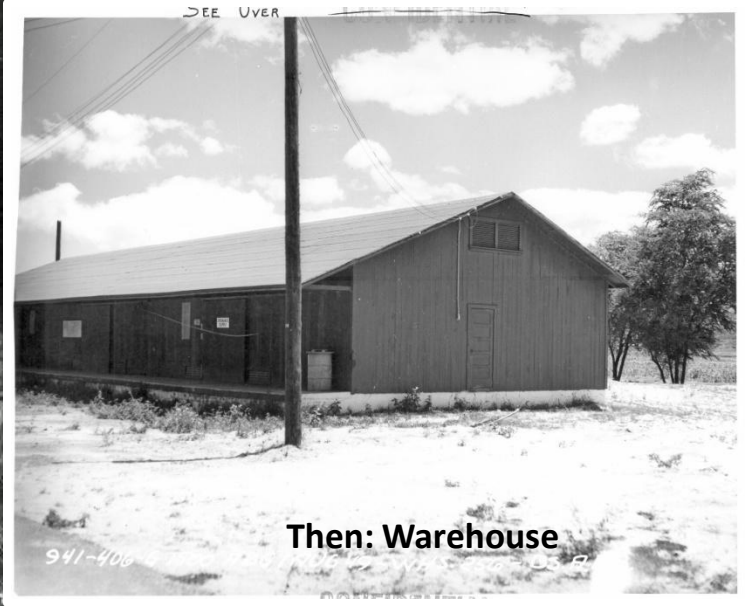
26-04-S-1500 RBG / AUG 49-12" 3500 22° 04' N-159° 42' W-BARKING SANDS F.F.B.

SOURCE: B&W: 15th Airlift Wing History Office, Joint Base Pearl Harbor-Hickam  
Color: John Burger, PMRF Range Sustainment

# BARKING SANDS, KAUAI, 1949



Now: BS 379



Then: Warehouse

26-0H-5-1500 RBG / AUG 49-12 3500 22 04' N-15

SOURCE: B&W: 15th Airlift Wing History Office, Joint Base Pearl Harbor Hickam  
Color: John Burger, PMRF Range Sustainment

# BARKING SANDS, KAUAI, 1949



(Future) Imiloa Road Gate



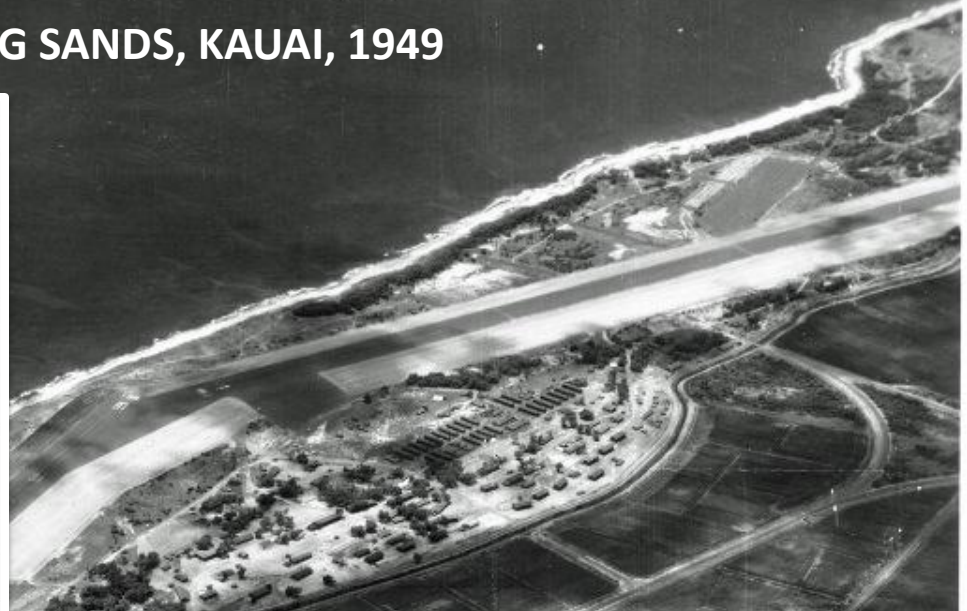
1944/1949: Main Gate to Barking Sands  
(Now: N. Gate aka "Ordnance Gate")

26-0H-S-1500 RBG 1 AUG 49 - MAIN GATE - BK SANDS P.F.B.

26-0H-S-1500 RBG 1 AUG 49 - 12" 3500' 22° 04' N - 159° 42' W - BARKING SANDS P.F.B.

SOURCE: 15th Airlift Wing History Office, Joint Base Pearl Harbor-Hickam

# BARKING SANDS, KAUAI, 1949

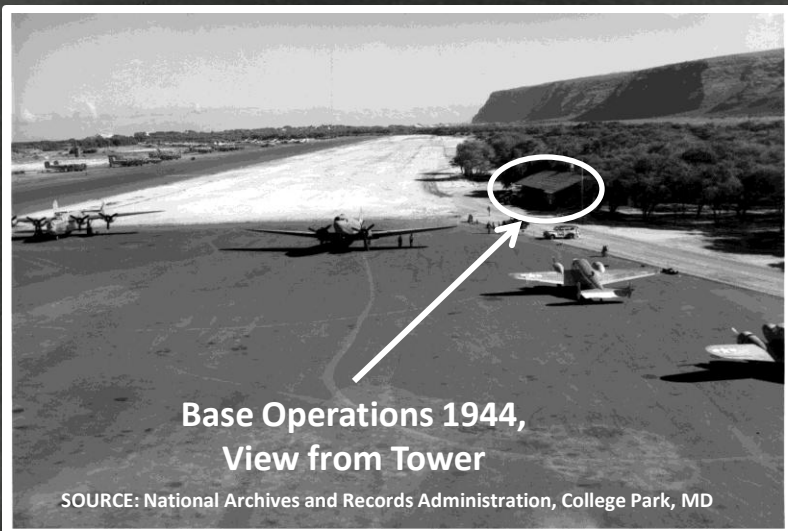


SOURCE: CAPT Rick Rogers, Archivist, Hawaiian Airlines

26-04-S-1500 RBG 1 AUG 49-12" 3500 22 04' N-159 42' W-BARKING SANDS F.F.B.

SOURCE: B&W: 15th Airlift Wing History Office, Joint Base Pearl Harbor-Hickam

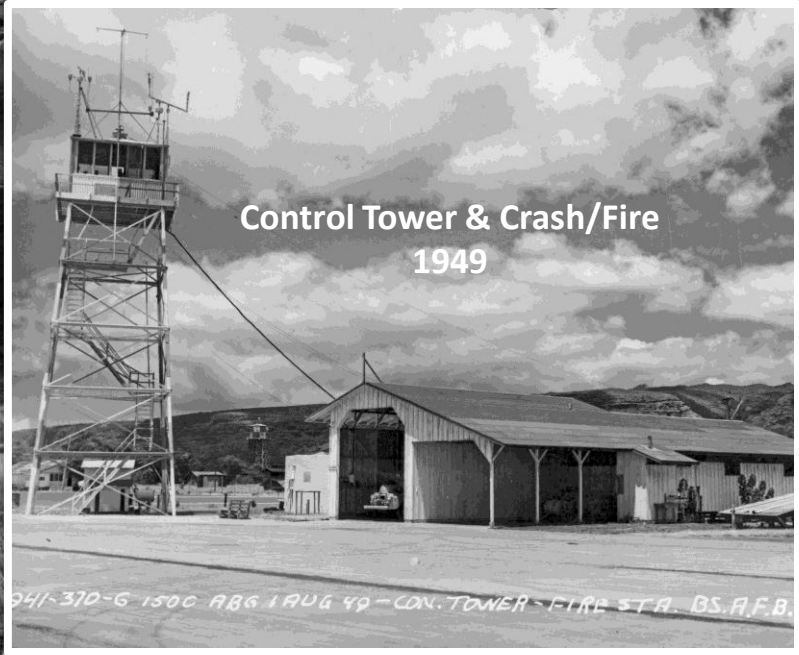
# BARKING SANDS, KAUAI, 1949



26-04-S-1500 RBG 1 AUG 49-12" 3500 22° 04' N-159° 42' W-BARKING SANDS A.F.B.

SOURCE: 15th Airlift Wing History Office, Joint Base Pearl Harbor-Hickam

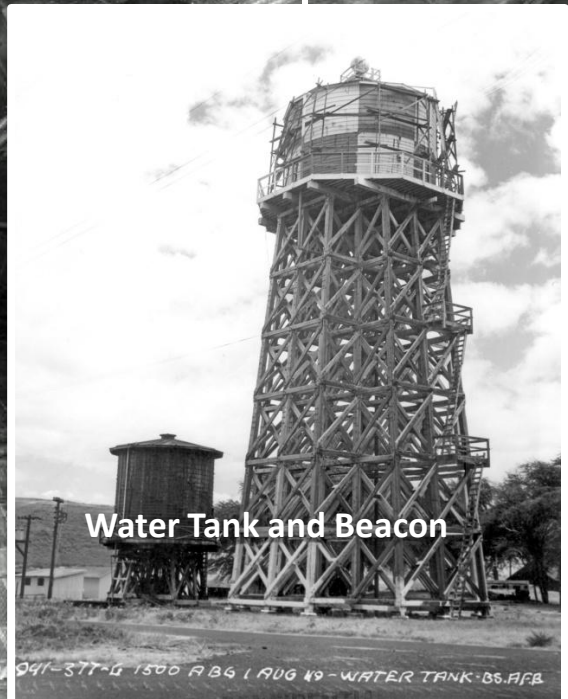
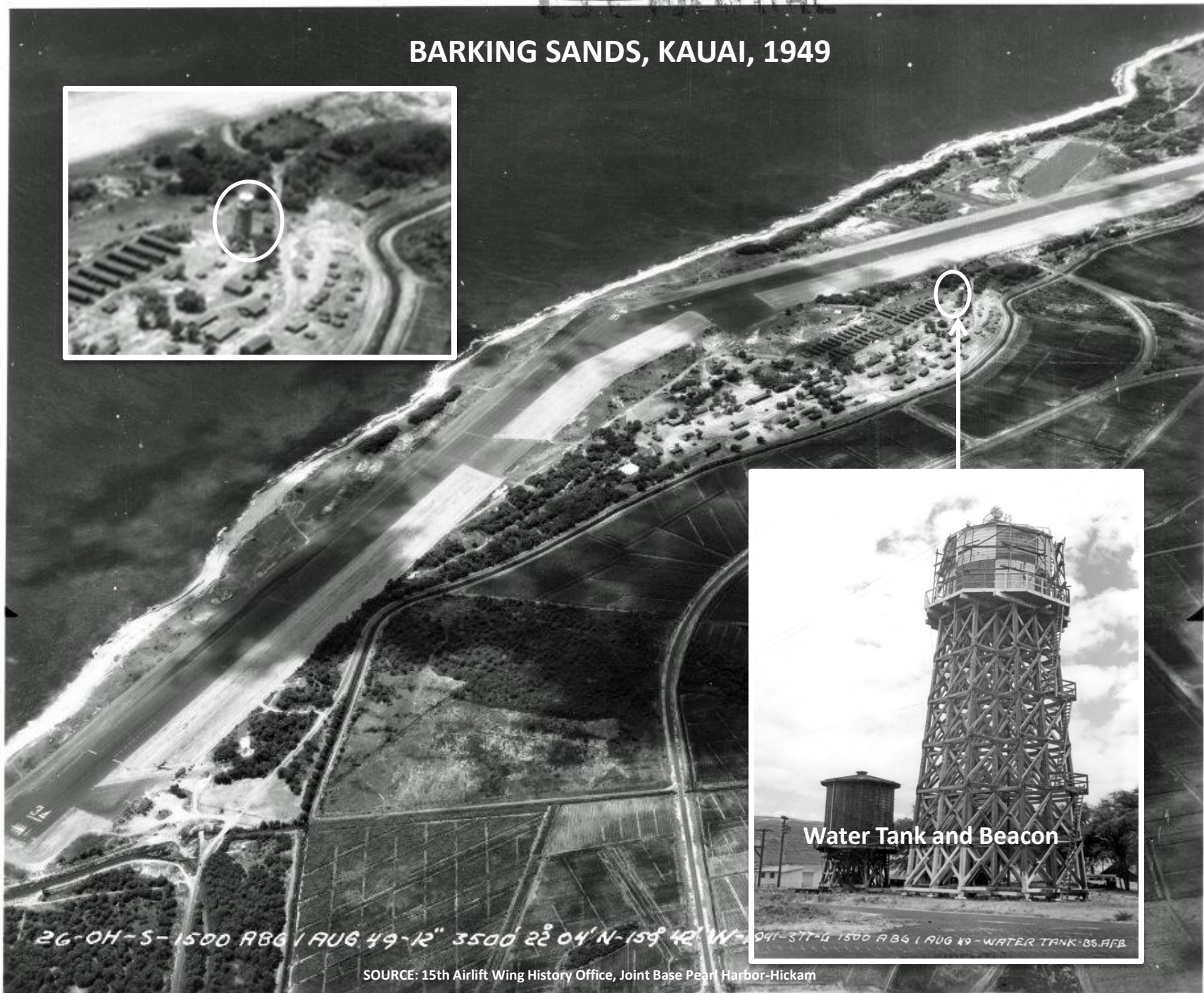
# BARKING SANDS, KAUIAI, 1949



26-0H-S-1500 RBG 1 AUG 49-12" 3500' 22° 04' N

SOURCE: 15th Airlift Wing History Office, Joint Base Pearl Harbor-Hickam

# BARKING SANDS, KAUAI, 1949



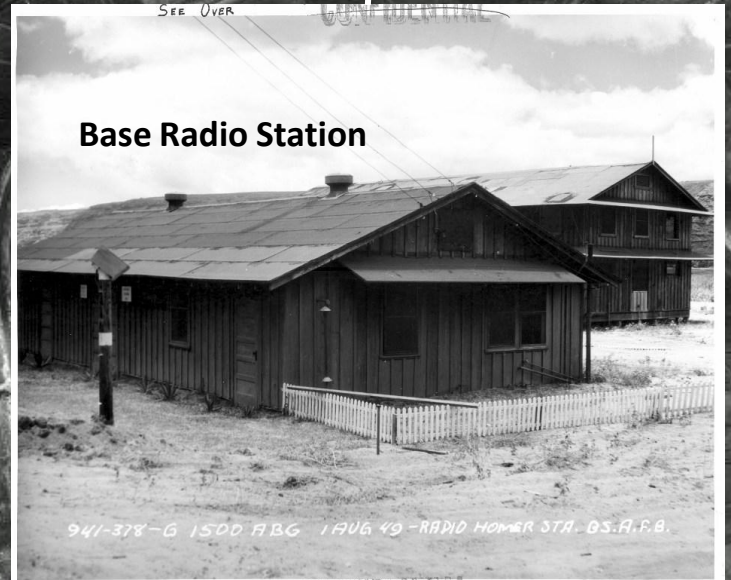
Water Tank and Beacon

26-0H-S-1500 RBG 1 AUG 49-12" 3500' 22° 04' N-159° 42' W-1041-37T-G 1500 RBG 1 AUG 49 - WATER TANK-BS.AFB

SOURCE: 15th Airlift Wing History Office, Joint Base Pearl Harbor-Hickam



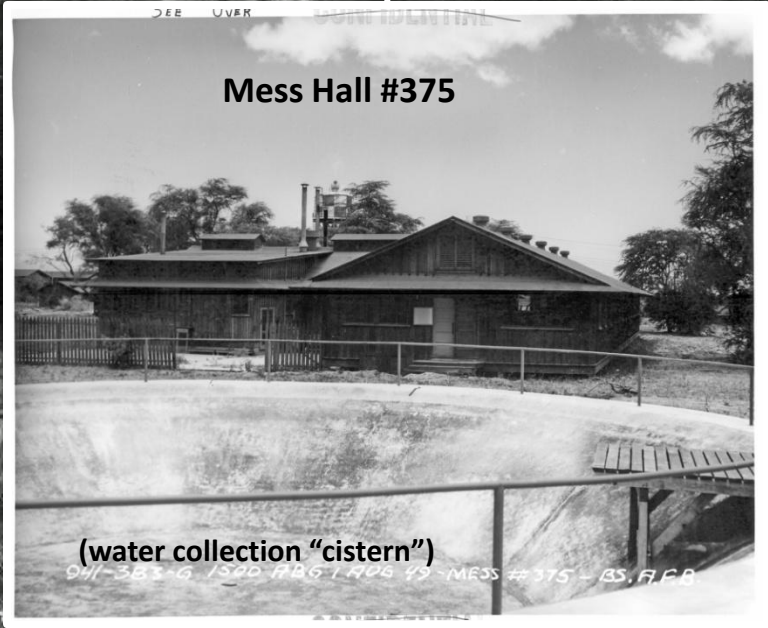
# BARKING SANDS, KAUAI, 1949



26-0H-S-1500 RBG 1 AUG 49-12" 3500 22° 04' N-159° 42' W-BARKING SANDS A.F.B.

SOURCE: 15th Airlift Wing History Office, Joint Base Pearl Harbor-Hickam

# BARKING SANDS, KAUAI, 1949



# BARKING SANDS, KAUAI, 1949



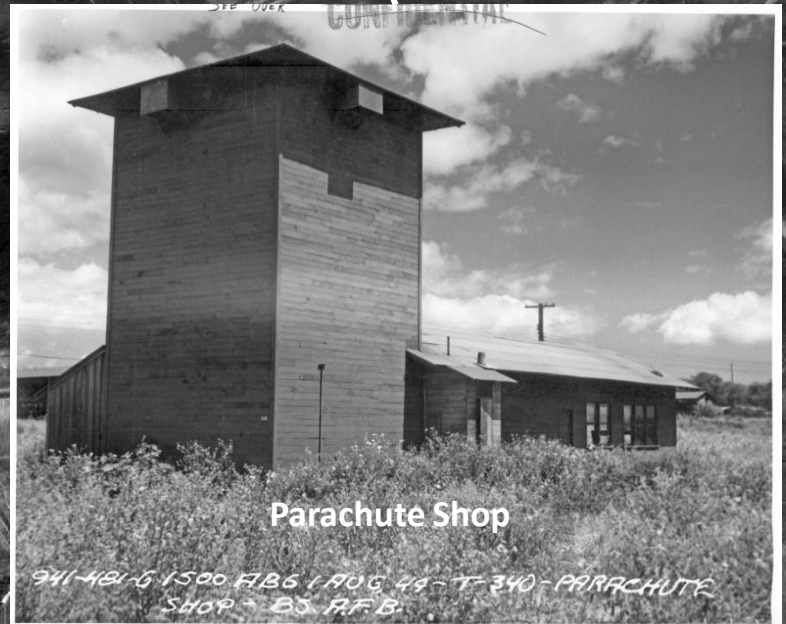
**QM Service Station**

941-405-G 1500 RBG / AUG 49 - Q.M. GAS. STG. 03. 07. 68

26-0H-S-1500 RBG / AUG 49-12" 3500 22 04' N-159 42' W-BARKING SANDS F.F.B.

SOURCE: 15th Airlift Wing History Office, Joint Base Pearl Harbor-Hickam

# BARKING SANDS, KAUAI, 1949



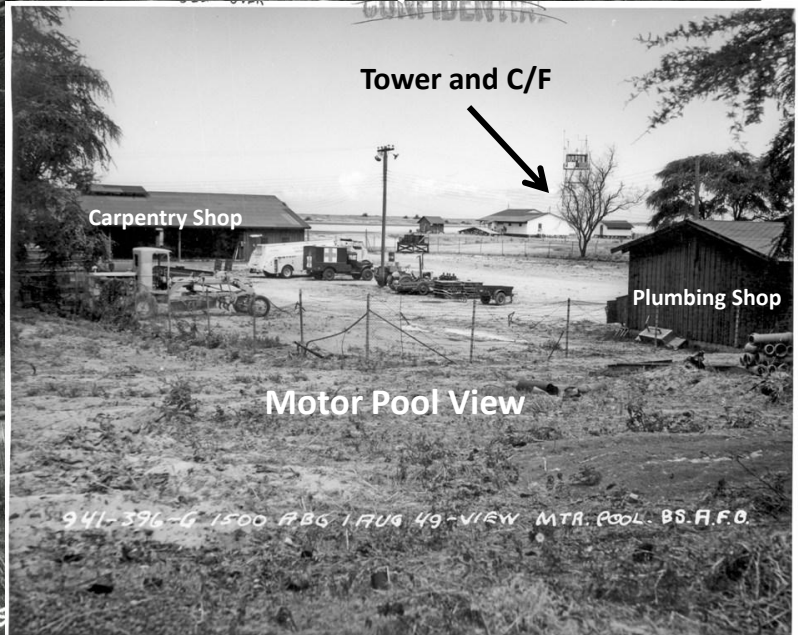
Parachute Shop

9WI-481-G 1500 RBG 1 AUG 49-T-340-PARACHUTE SHOP - BS AFB

26-0H-S-1500 RBG 1 AUG 49-12" 3500' 22° 04' N

# BARKING SANDS, KAUAI, 1949

## Motor Pool Area and Shops



26-0H-S-1500 RBG 1 AUG 49-12" 3500 22° 04' N-159

SOURCE: 15th Airlift Wing History Office, Joint Base Pearl Harbor-Hickam

# BARKING SANDS, KAUAI, 1949



Carpentry Shop inside Motor Pool Area



941-362-6 1500 RBG / AUG 49 - CARP. SHOP - 2019 - BS. A.F.B.

26-0H-S-1500 RBG / AUG 49-12" 3500' 22' 04" N-159' 42" W-BARKING SANDS A.F.B.

SOURCE: 15th Airlift Wing History Office, Joint Base Pearl Harbor-Hickam

# BARKING SANDS, KAUI, 1949

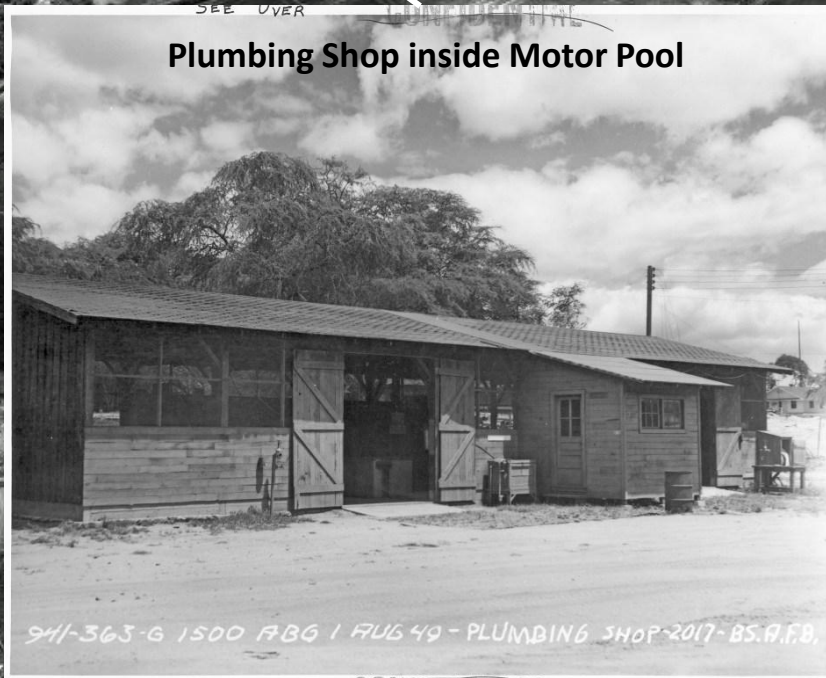


SOURCE: 15th Airlift Wing History Office, Joint Base Pearl Harbor-Hickam

# BARKING SANDS, KAUAI, 1949



**Plumbing Shop inside Motor Pool**



941-363-6 1500 RBG / AUG 49 - PLUMBING SHOP - 2017 - BS.A.F.B.

26-0H-S-1500 RBG / AUG 49 - 12" 3500 22 04' N 159 12' W BARKING SANDS IRI.B.

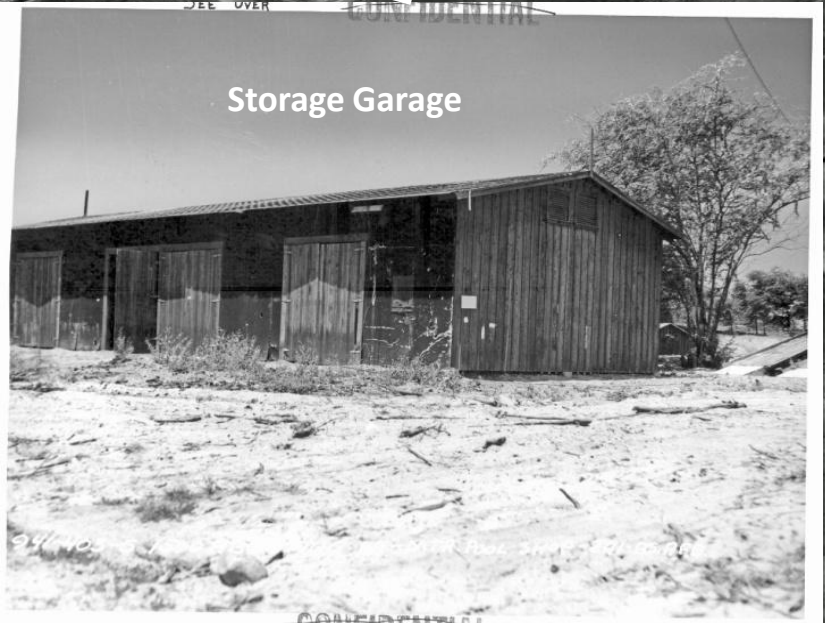


# BARKING SANDS, KAUAI, 1949



SOURCE: 15th Airlift Wing History Office, Joint Base Pearl Harbor-Hickam

# BARKING SANDS, KAUAI, 1949

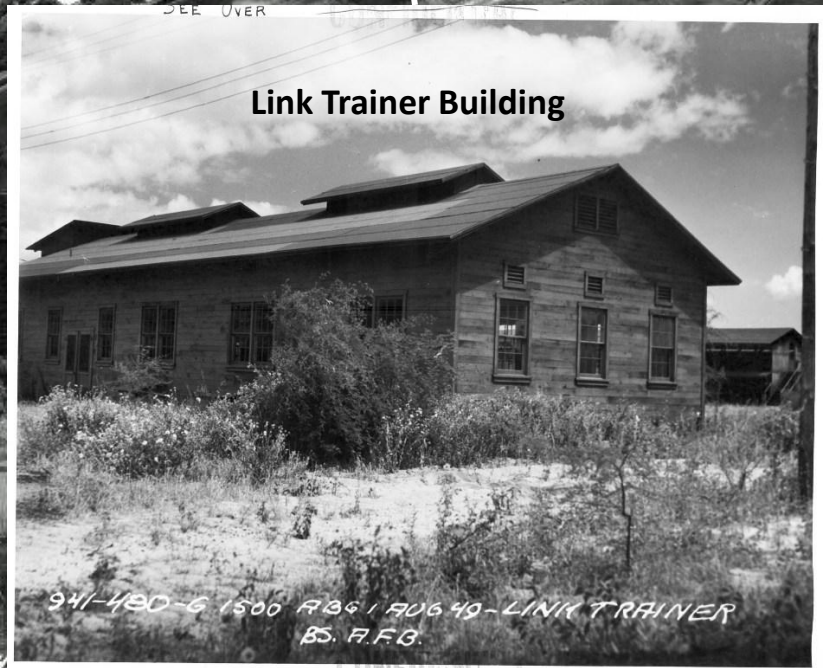


26-0H-S-1500 RBG / AUG 49-12" 3500' 22' 04" N

# BARKING SANDS, KAUAI, 1949



SEE OVER

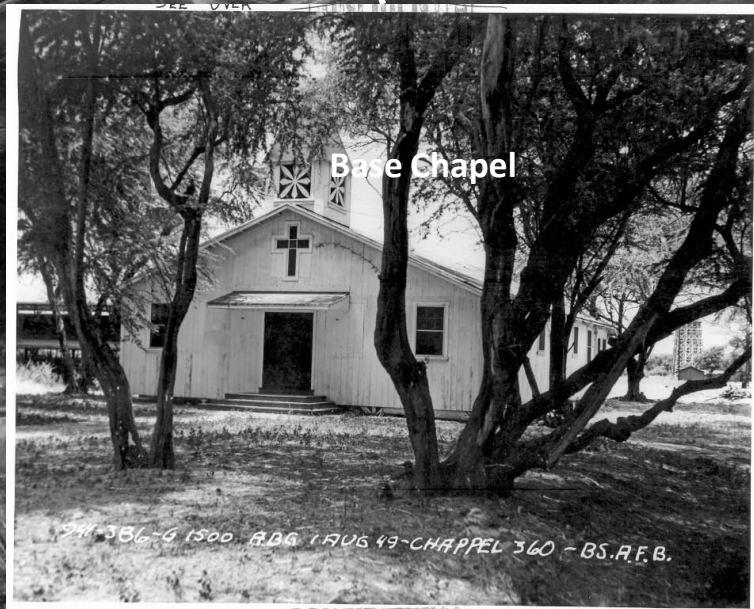
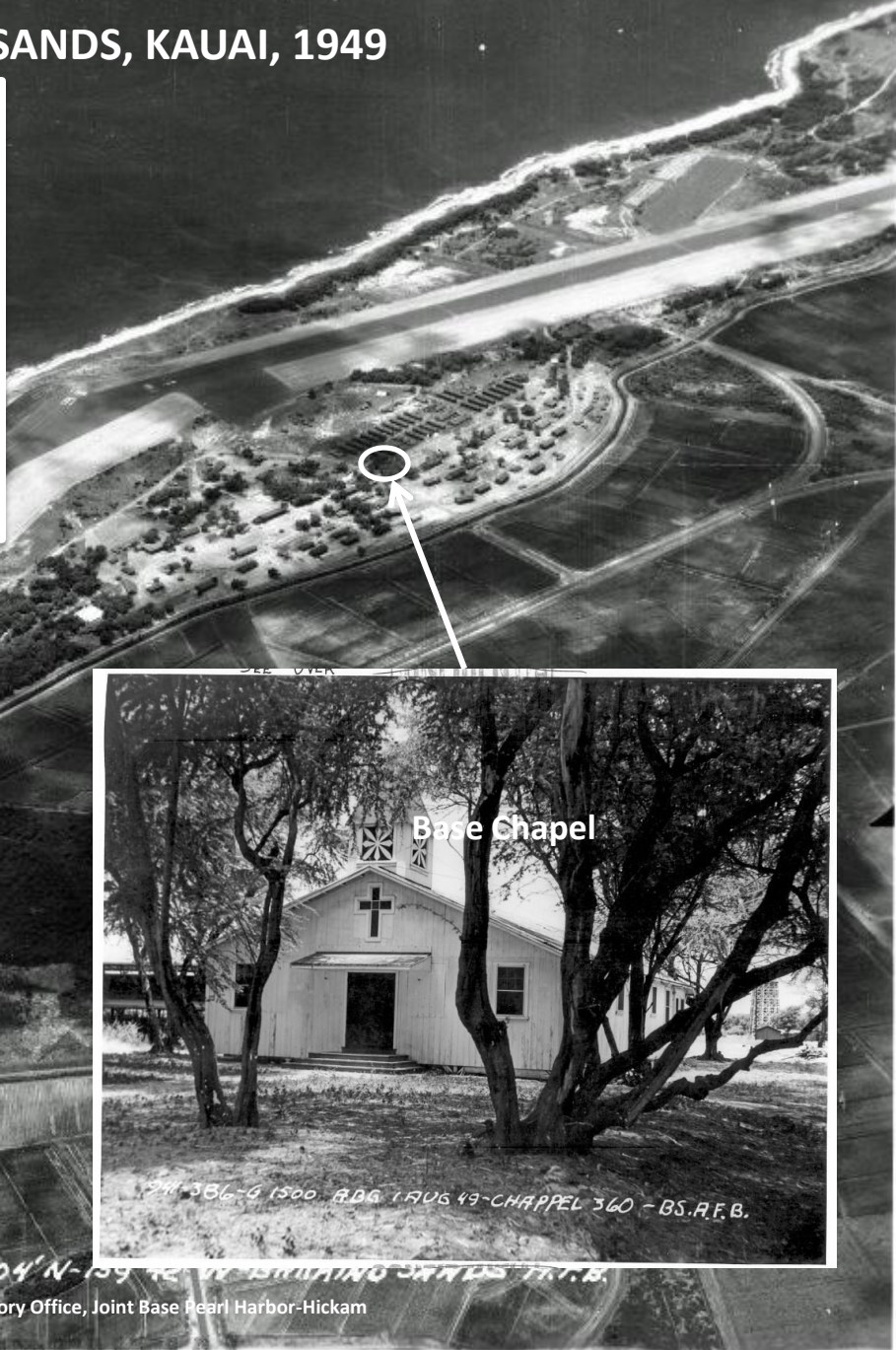


**Link Trainer Building**

941-480-6 1500 RBG / AUG 49 - LINK TRAINER  
BS. F.F.B.

26-0H-S-1500 RBG / AUG 49-12" 3500 22 04

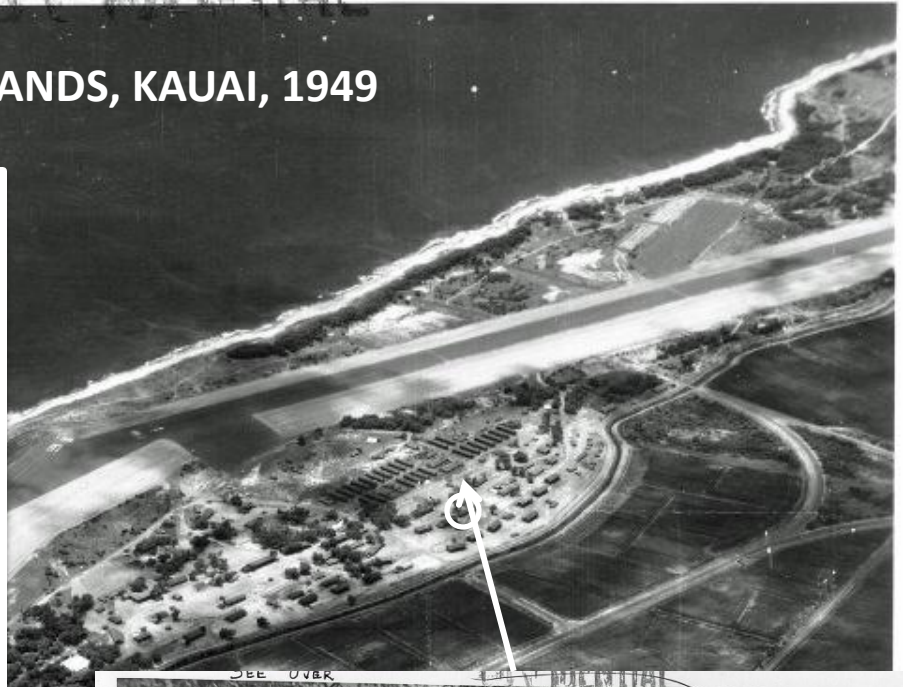
# BARKING SANDS, KAUAI, 1949



26-OH-S-1500 RBG 1 AUG 49-12" 3500 22 04' N-159 42' W BARKING SANDS T.F.B.

SOURCE: 15th Airlift Wing History Office, Joint Base Pearl Harbor-Hickam

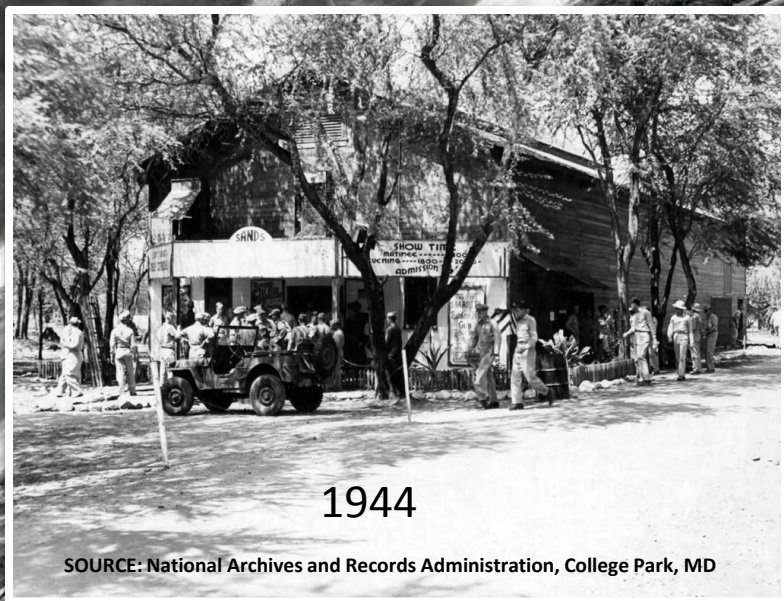
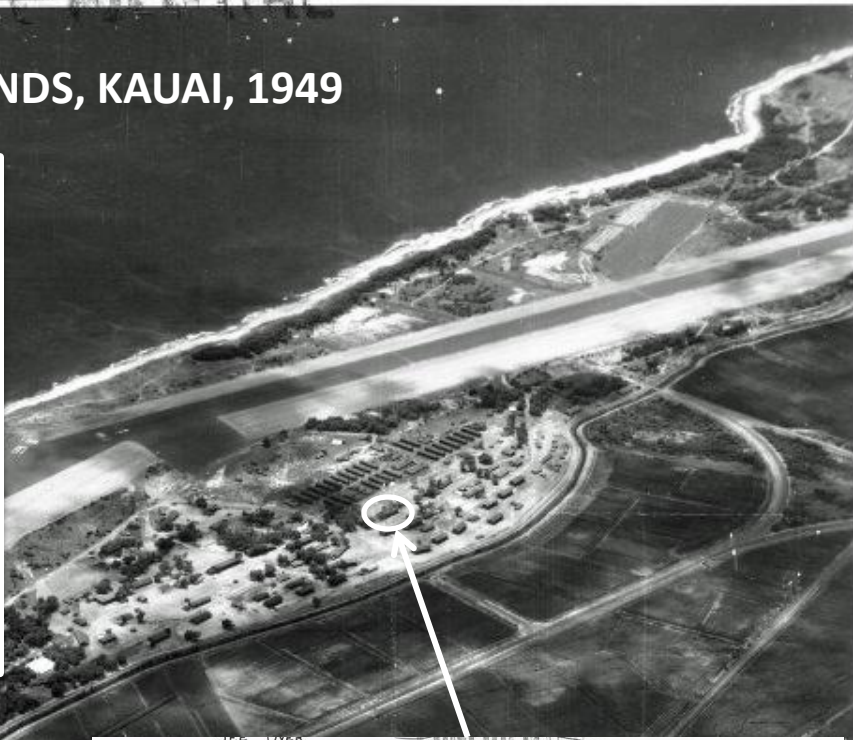
# BARKING SANDS, KAUAI, 1949



941-366-G 1500 RBG / AUG 49 - DISPENSARY - BS. H.F.B.

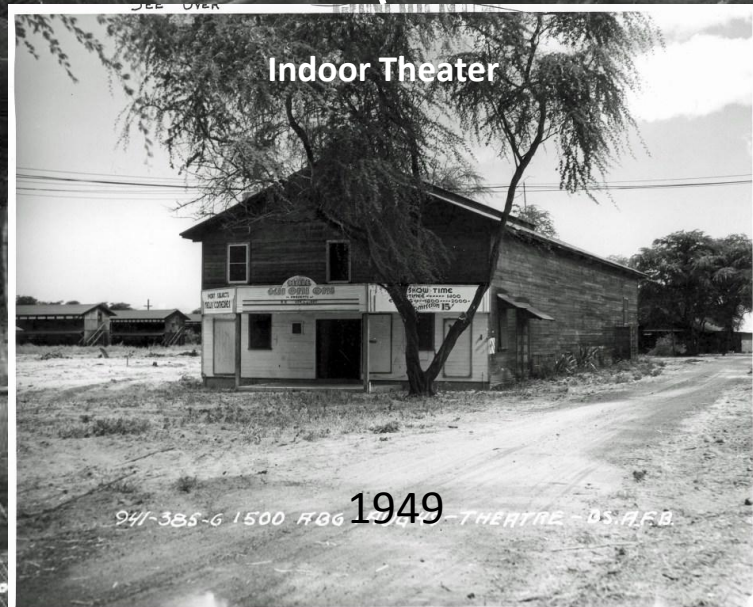
26-0H-S-1500 RBG / AUG 49-12" 3500' 22° 04' N-15

# BARKING SANDS, KAUAI, 1949



1944

SOURCE: National Archives and Records Administration, College Park, MD



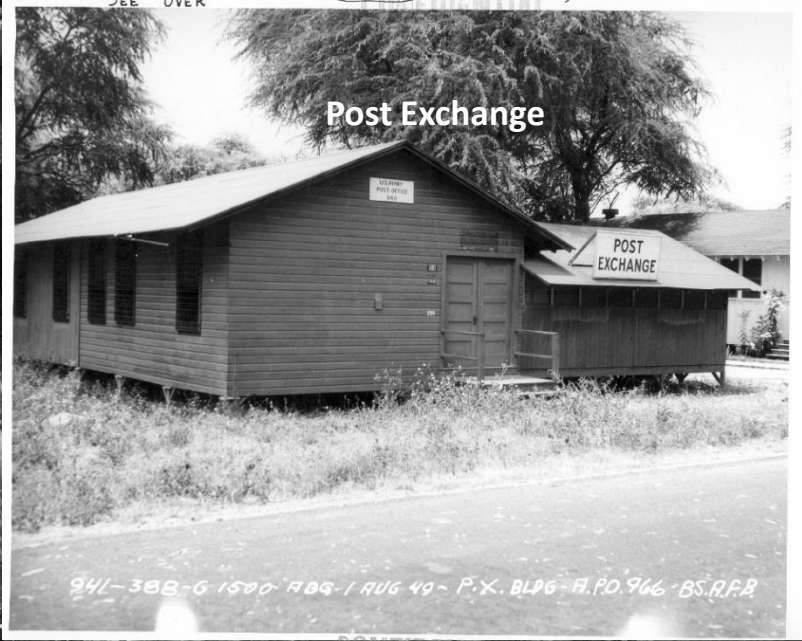
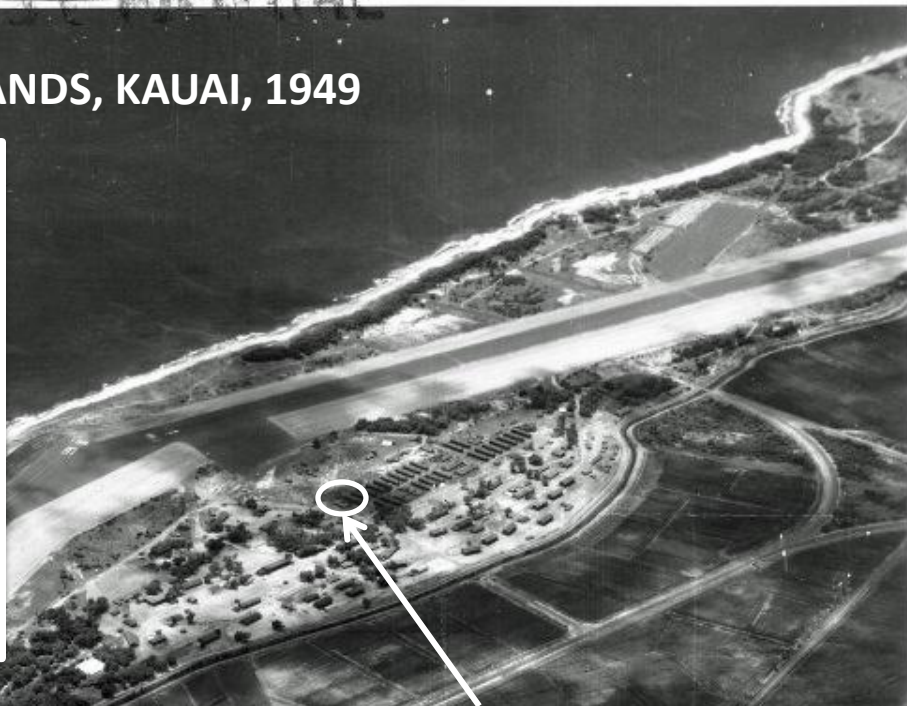
Indoor Theater

1949

941-385-6 1500 HOGG THEATRE - DS, AFB

SOURCE: 15th Airlift Wing History Office, Joint Base Pearl Harbor-Hickam

# BARKING SANDS, KAUAI, 1949

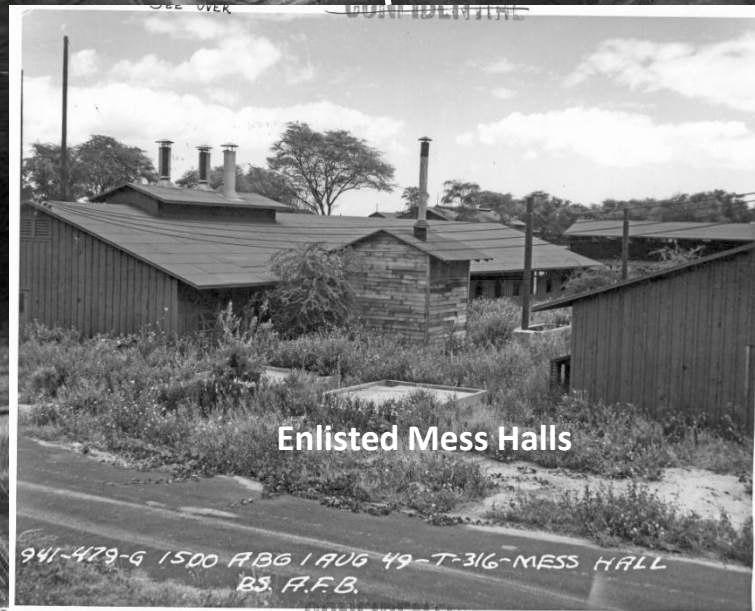


941-3BB-6 1500 RBG 1 AUG 49 - P.X. BLDG - A.P.O. 966 - BS, R.F.R.

26-0H-S-1500 RBG 1 AUG 49 - 12" 3500' 22° 04' N

SOURCE: 15th Airlift Wing History Office, Joint Base Pearl Harbor-Hickam

# BARKING SANDS, KAUAI, 1949



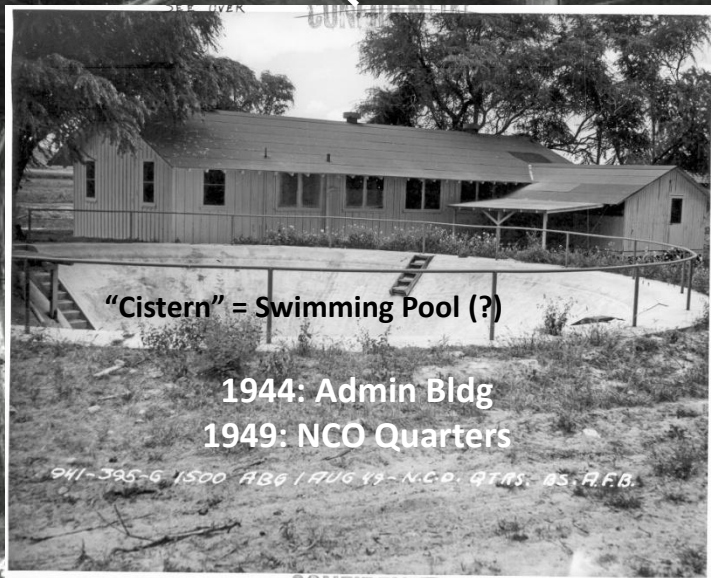
26-0H-S-1500 RBG 1 AUG 49-12" 3500' 22° 04' N-159° 42' W BY BIRMINGHAM JAN 1950 T.T.B.

941-479-G 1500 RBG 1 AUG 49-T-316-MESS HALL  
BS. F.F.B.

SOURCE: 15th Airlift Wing History Office, Joint Base Pearl Harbor-Hickam



# BARKING SANDS, KAUAI, 1949



“Cistern” = Swimming Pool (?)

1944: Admin Bldg  
1949: NCO Quarters

941-395-6 1500 RBG 1 AUG 49-12" N.C.P. QTRS. BS. A.F.B.

26-0H-S-1500 RBG 1 AUG 49-12" 3500' 22° 04' N-159°

SOURCE: 15th Airlift Wing History Office, Joint Base Pearl Harbor-Hickam

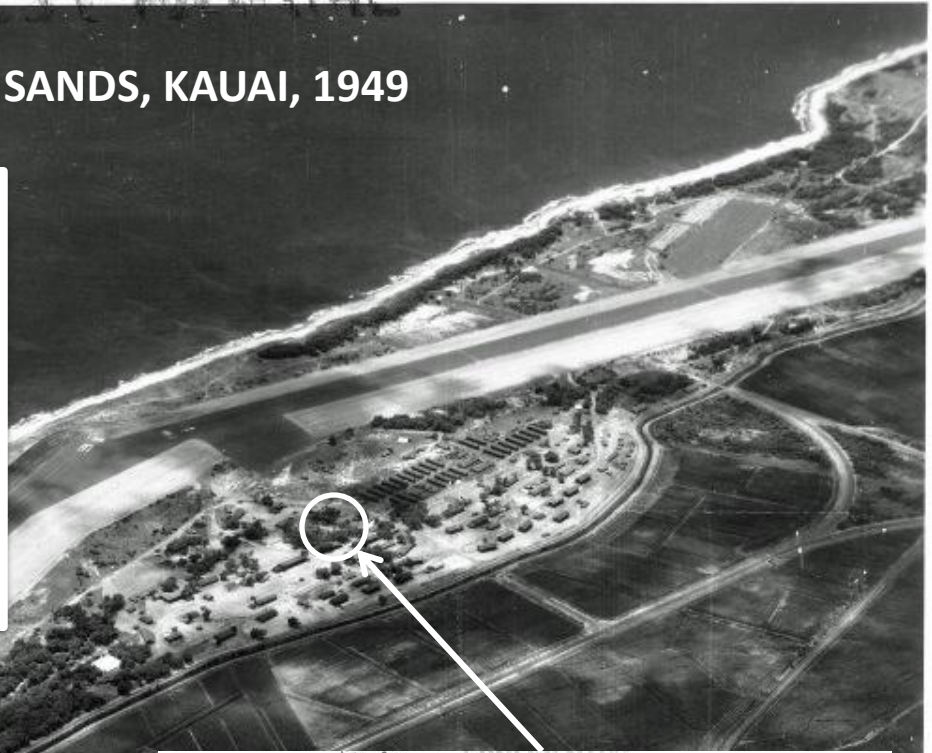
# BARKING SANDS, KAUAI, 1949



26-0H-S-1500 RBG / AUG 49-12" 3500' 22' 04" N-159 42' W BARKING SANDS I.R.F.

SOURCE: 15th Airlift Wing History Office, Joint Base Pearl Harbor-Hickam

# BARKING SANDS, KAUAI, 1949

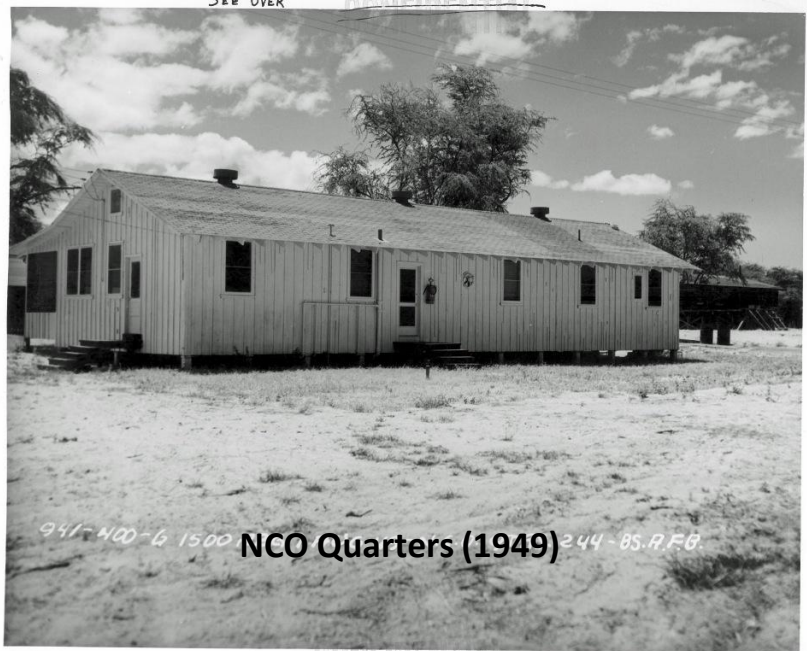


26-0H-S-1500 RBG / AUG 49-12" 3500' 22° 04' N-159°

SOURCE: 15th Airlift Wing History Office, Joint Base Pearl Harbor-Hickam

# BARKING SANDS, KAUAI, 1949

Location TBD

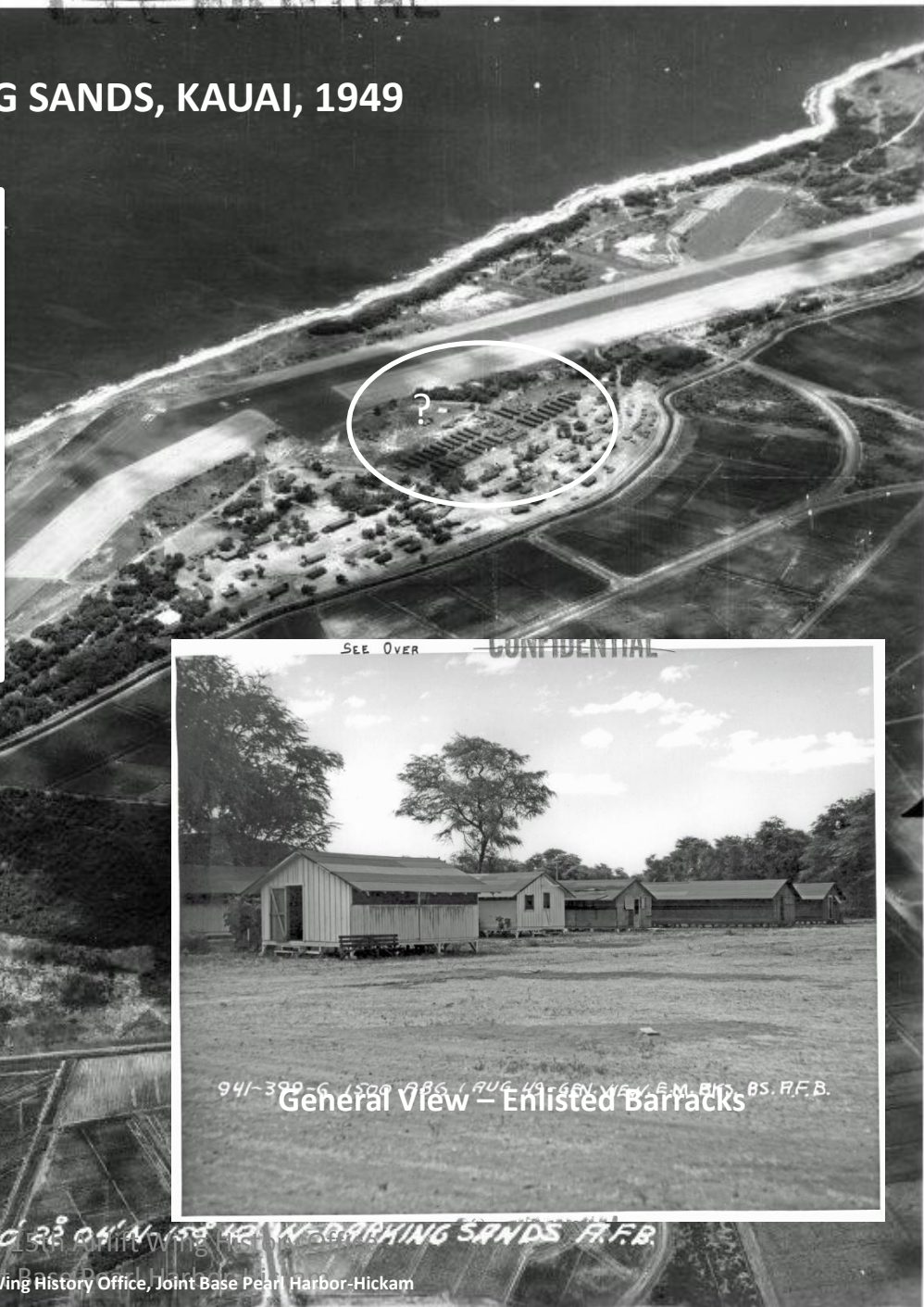


26-0H-S-1500 RBG / AUG 49-12" 3500 22° 04' N-159° 42' W-BARKING SANDS A.F.B.

SOURCE: 15th Airlift Wing History Office, Joint Base Pearl Harbor-Hickam

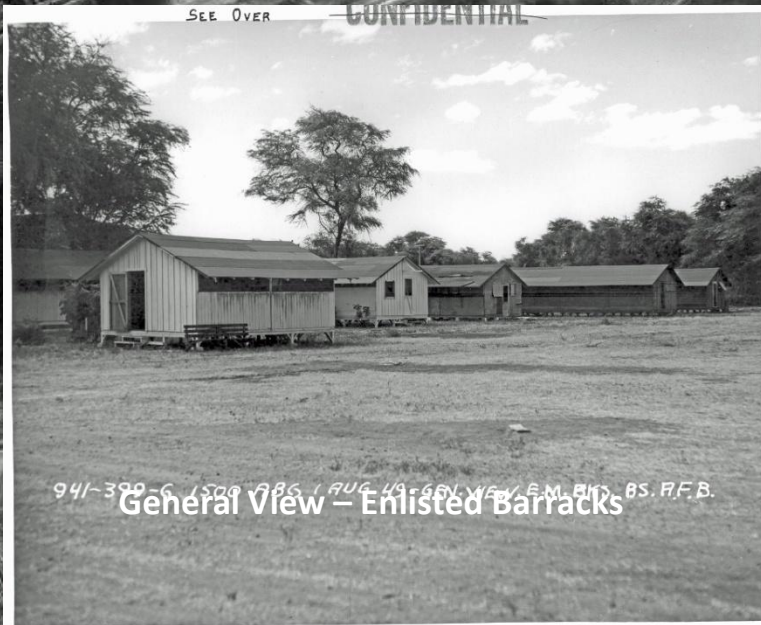
# BARKING SANDS, KAUAI, 1949

Location TBD



SEE OVER

~~CONFIDENTIAL~~

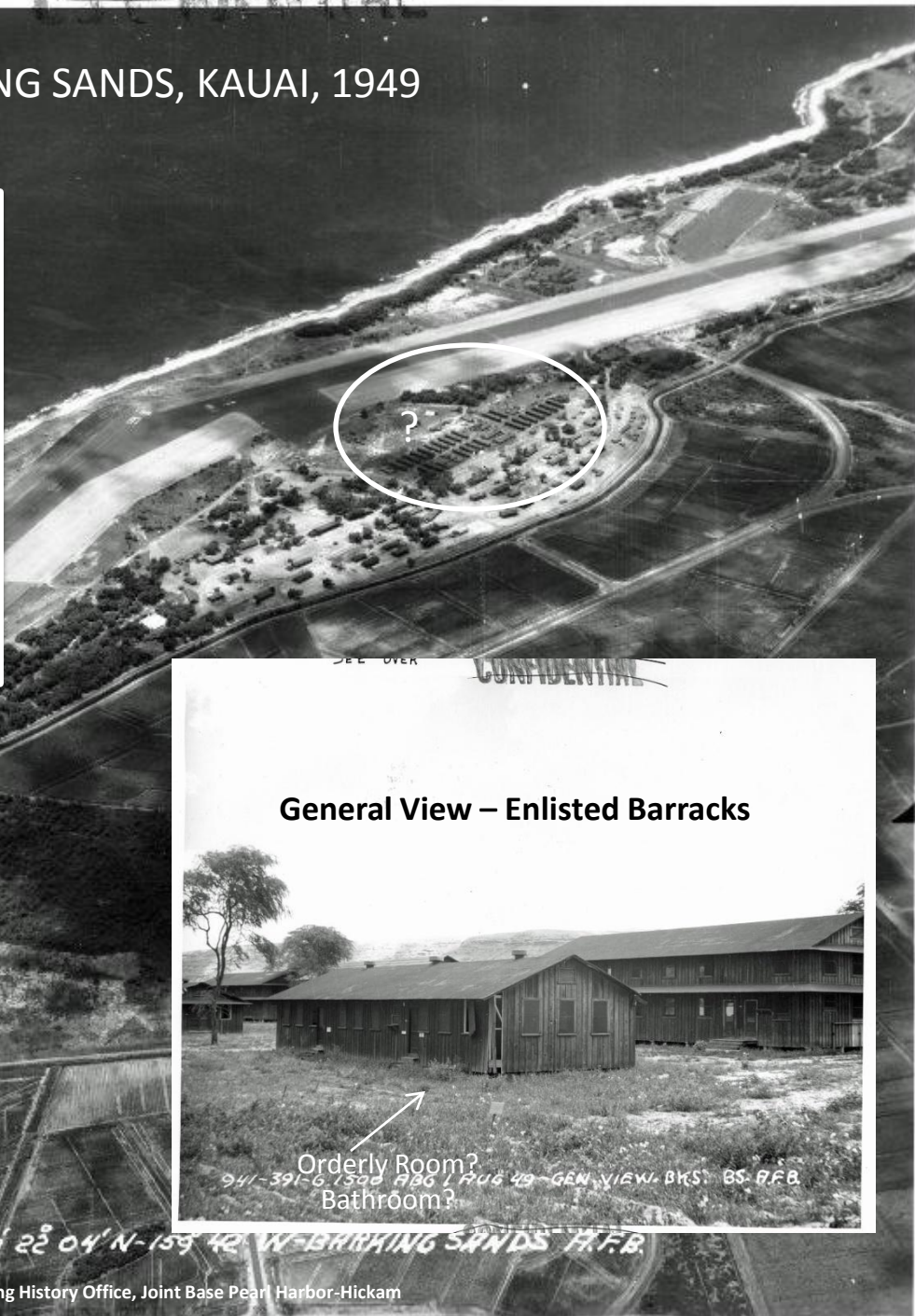


941-300-G 1500 RBG 1 AUG 49 12" 3500 25 04' N 159 12' W BARKING SANDS P.F.B.  
General View - Enlisted Barracks

26-0H-S-1500 RBG 1 AUG 49 12" 3500 25 04' N 159 12' W BARKING SANDS P.F.B.

BARKING SANDS, KAUAI, 1949

Location TBD



~~CONFIDENTIAL~~

General View – Enlisted Barracks

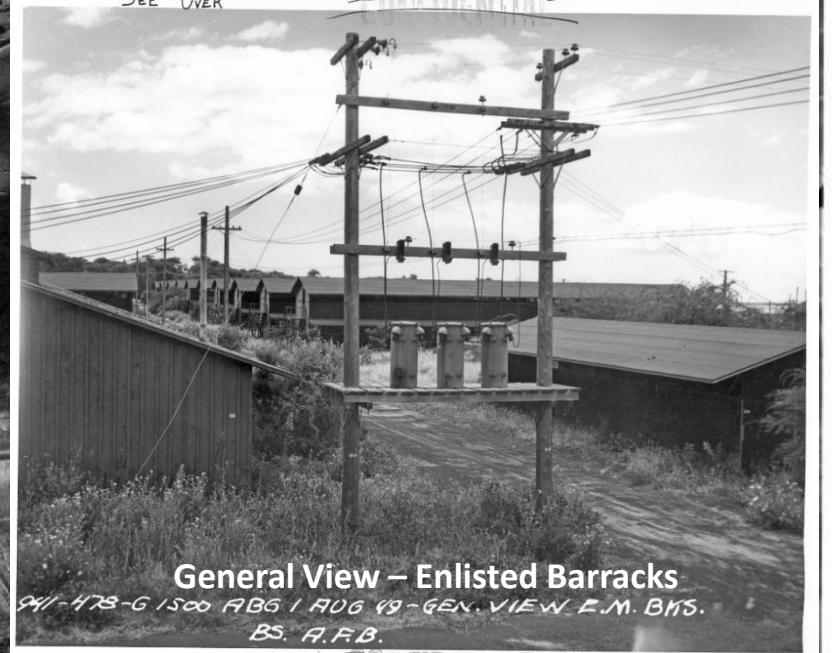
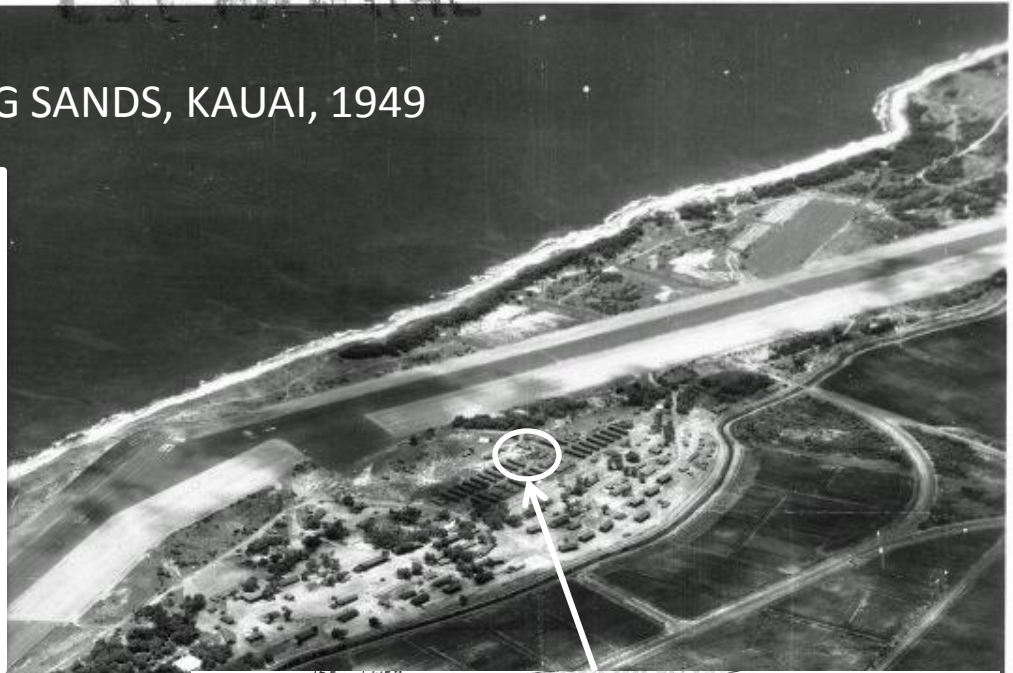


Orderly Room?  
Bathroom?

941-391-6, 1500 RBG / AUG 49 - GEN. VIEW. BKS: BS. P.F.B.

26-0H-S-1500 RBG / AUG 49-12" 3500' 22' 04" N-159' 42" W-BARKING SANDS H.F.B.

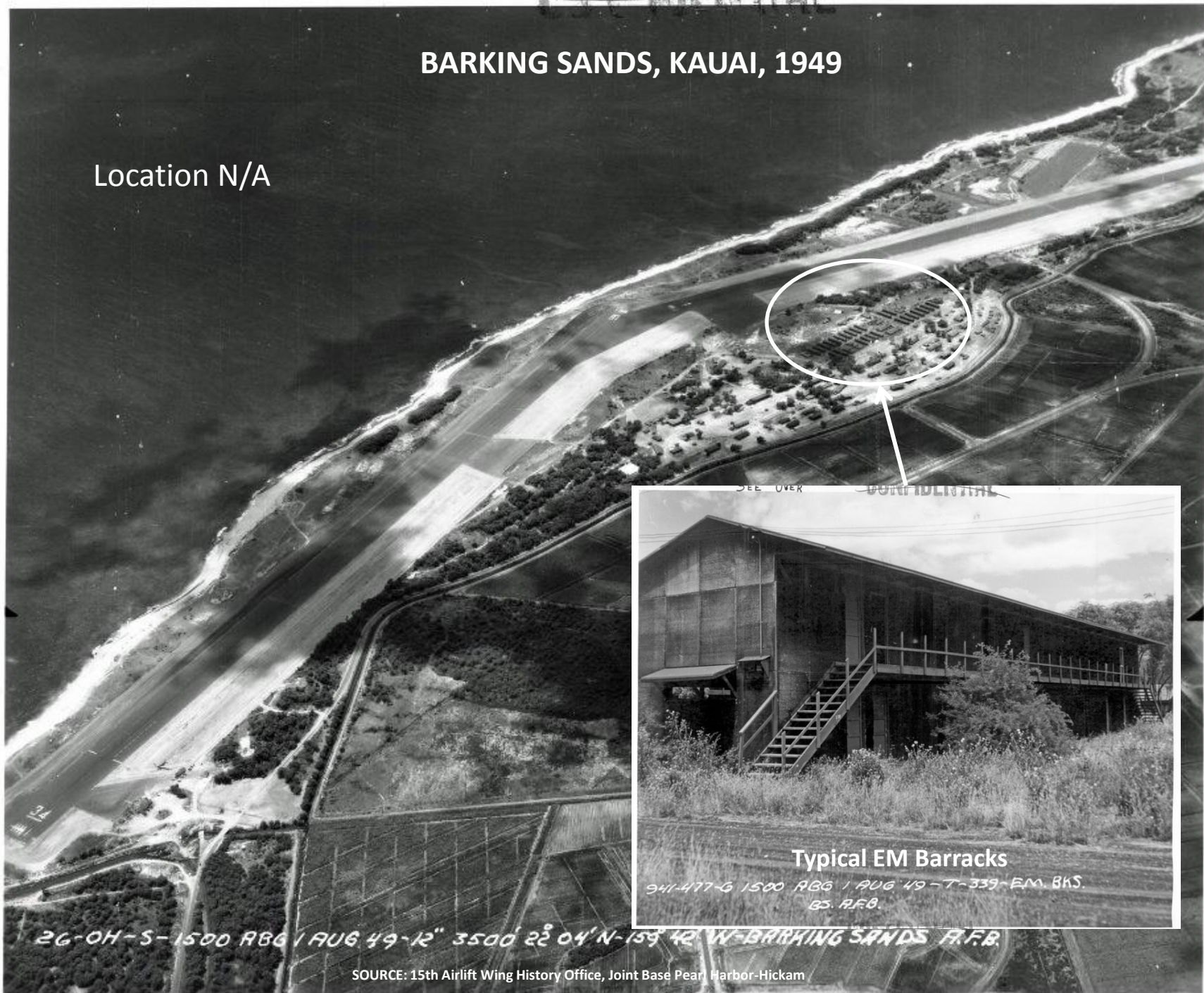
# BARKING SANDS, KAUAI, 1949



26-0H-S-1500 RBG 1 AUG 49-12" 3500' 22° 04' N-159° 12' W BARKING SANDS T.T.R.

# BARKING SANDS, KAUAI, 1949

Location N/A



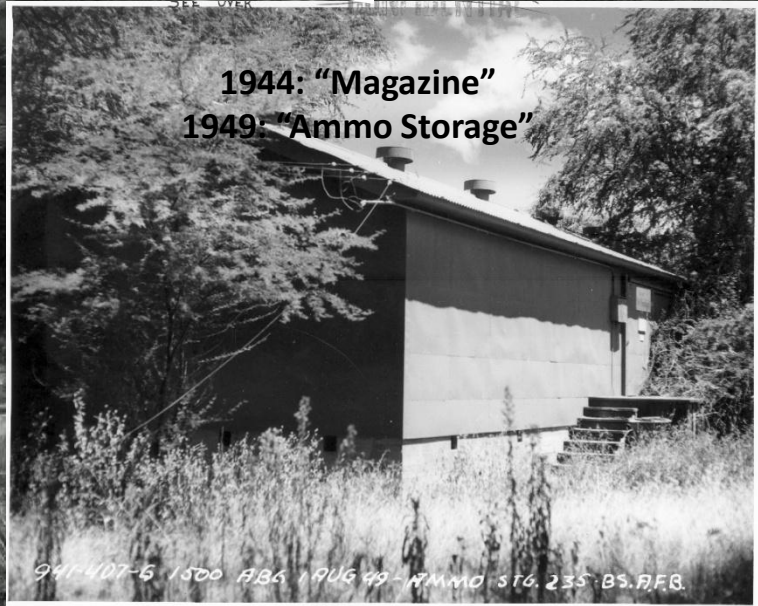
Typical EM Barracks

941-477-G 1500 RBG / AUG 49-T-339-EM BKS.  
BS. RFB.

26-04-S-1500 RBG / AUG 49-12" 3500' 22 04' N-159 42' W-BARKING SANDS A.F.B.

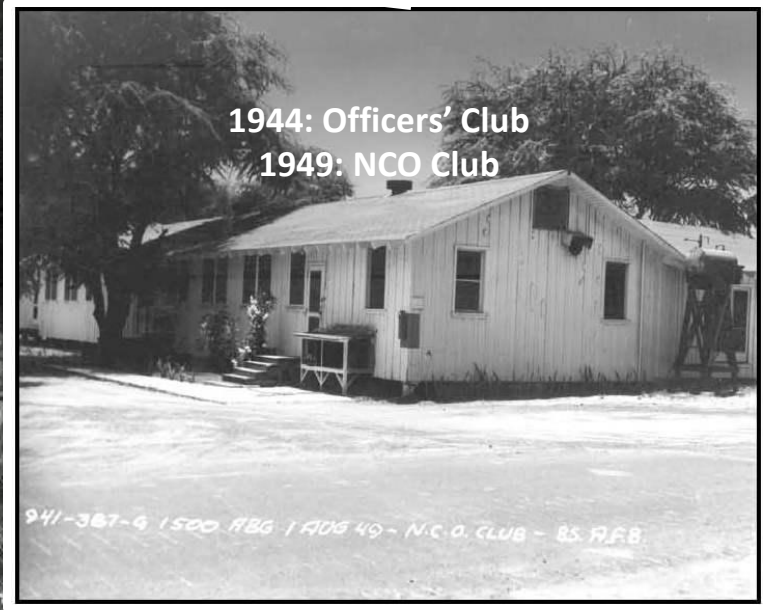


# BARKING SANDS, KAUAI, 1949



26-0H-S-1500 RBG 1 AUG 49-12" 3500' 22° 04' N-159° 12' W BARKING SANDS T.I.R.

# BARKING SANDS, KAUAI, 1949



1944: Officers' Club  
1949: NCO Club

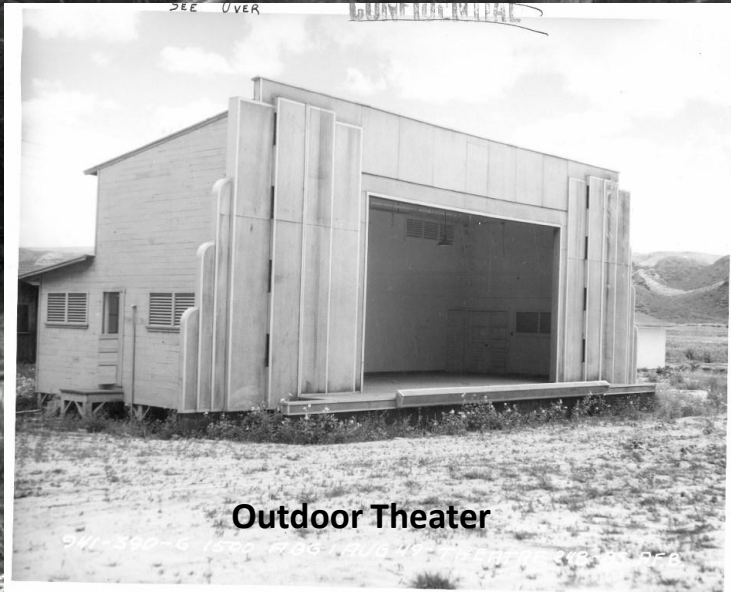
941-387-9 1500 RBG 1 AUG 49 - N.C.O. CLUB - BS. P.F.B.

26-0H-S-1500 RBG 1 AUG 49-12" 3500' 22° 04' N-15'

SOURCE: 15th Airlift Wing History Office, Joint Base Pearl Harbor-Hickam

# BARKING SANDS, KAUAI, 1949

Location TBD



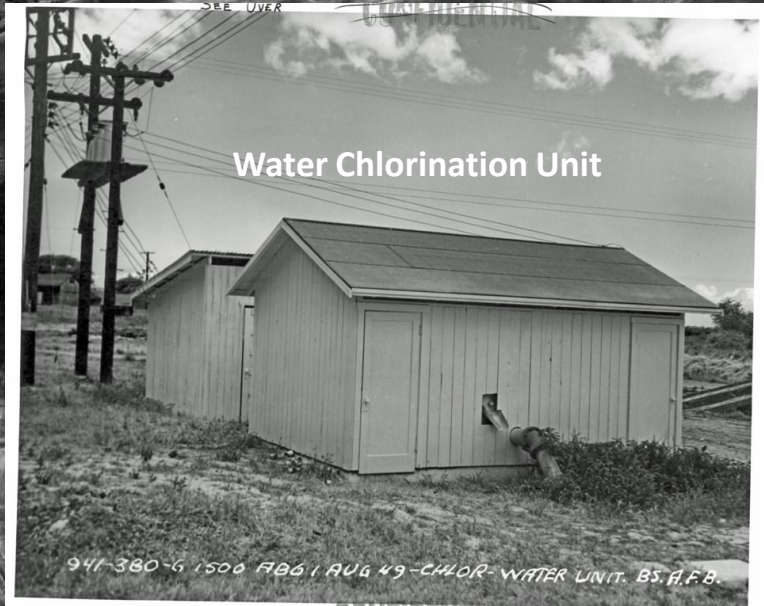
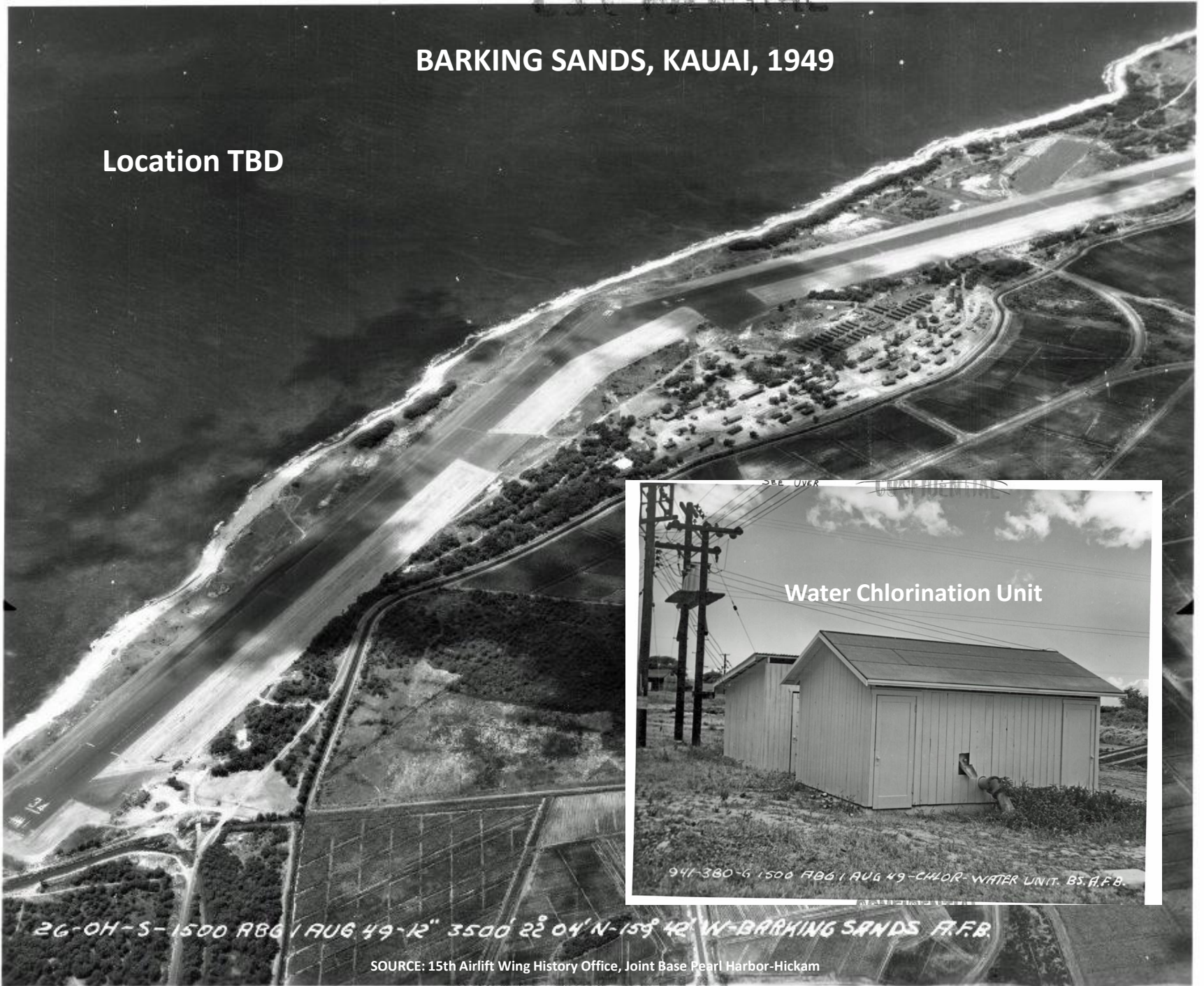
Outdoor Theater

26-0H-S-1500 RBG / AUG 49-12" 3500' 22 04' N-159'

SOURCE: 15th Airlift Wing History Office, Joint Base Pearl Harbor-Hickam

# BARKING SANDS, KAUAI, 1949

Location TBD



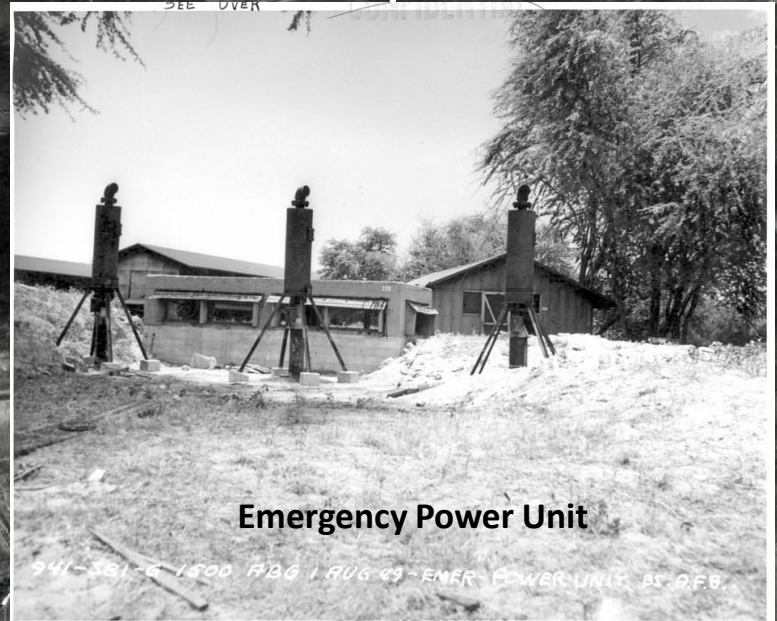
Water Chlorination Unit

941-380-6 1500 RBG / AUG 49 - CHLOR WATER UNIT. BS. A.F.B.

26-0H-S-1500 RBG / AUG 49 - 12" 3500' 22' 04" N - 159' 42" W - BARKING SANDS A.F.B.

SOURCE: 15th Airlift Wing History Office, Joint Base Pearl Harbor-Hickam

# BARKING SANDS, KAUAI, 1949

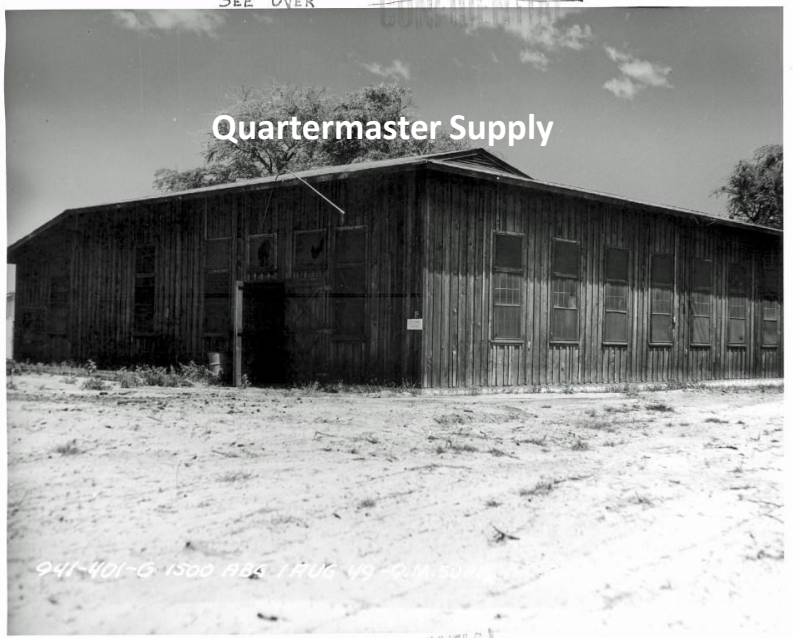


Emergency Power Unit

941-381-6 1500 RBG 1 AUG 49-EMER POWER UNITS BY R.F.B.

26-OH-S-1500 RBG 1 AUG 49-12" 3500' 22° 04' N

# BARKING SANDS, KAUIAI, 1949



941-401-G 1500 RBG / AUG 49 12" 3500' 22' 04" N 159 42' W BARKING SANDS T.I.R.B.

26-0H-S-1500 RBG / AUG 49-12" 3500' 22' 04" N 159 42' W BARKING SANDS T.I.R.B.

SOURCE: 15th Airlift Wing History Office, Joint Base Pearl Harbor-Hickam

# BARKING SANDS, KAUAI, 1949

Location Unknown



Oil drum storage in revetment (1949)

941-369-6 1500 RBG 1 AUG 49 - OIL STG. AREA - BS. A.F.B.

26-04-S-1500 RBG 1 AUG 49-12" 3500 22° 04' N-159° 42' W-BARKING SANDS A.F.B.

SOURCE: 15th Airlift Wing History Office, Joint Base Pearl Harbor-Hickam

# BARKING SANDS, KAUIAI, 1949

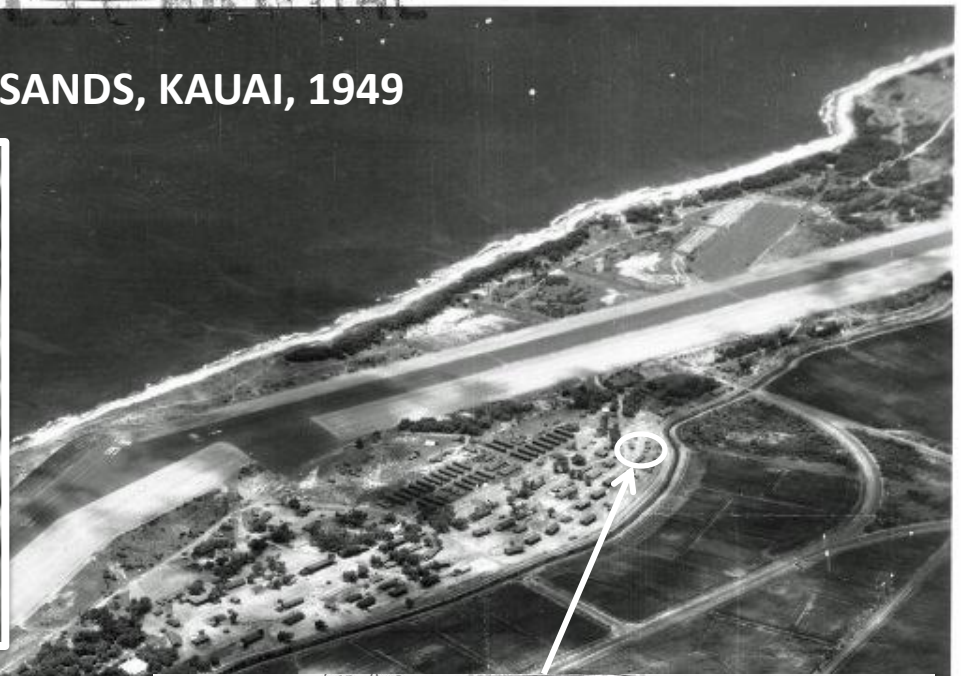


## Fuel Farm Aerial (1949) Enlarged View





# BARKING SANDS, KAUAI, 1949



“Storm Damage” (1949)  
(OR: Tsunami damage, 1946?)

94-379-G 1500 RBG 1 AUG 49 - STORM DMG. BK SANDS A.F.B.

26-OH-S-1500 RBG 1 AUG 49-12" 3500 22° 04' N-159° 42' W-BARKING SANDS A.F.B.