

TECHNICAL REPORT

Cleaning and Abandonment of Cross Country Pipelines

PRL 03-13

Pearl Harbor, Hawaii

Contract No.: FA8903-04-D-8676

Task Order No.: 0001

Revision 0

January 2005

Submitted to:

Air Force Center for Environmental Excellence
3300 Sidney Brooks Road
Brooks City Base, Texas 78235-5112

Submitted by:

 Shaw Environmental, Inc.
590 Paiea Street
Honolulu, Hawaii 96819-1835

Table of Contents

List of Appendices	ii
Acronyms and Abbreviations	iii
1.0 Introduction	1-1
2.0 Cross-Country Pipeline Fieldwork	2-1
2.1 Pipeline from Red Hill Complex to PCFA	2-1
2.1.1 Pipeline Preparation	2-1
2.1.2 Cleaning and Abandonment of Pipeline	2-1
2.1.3 Abandonment of Valve Chambers	2-1
2.2 Pipeline from the Former NASBP to PCFA	2-2
2.2.1 Pipeline Preparation	2-2
2.2.2 Cleaning and Abandonment of Pipeline	2-2
2.2.2.1 VC-8 (NASBP) to VC-5 (West Bank of West Loch)	2-2
2.2.2.2 VC-5 to VC-4 (East Bank of West Loch)	2-3
2.2.2.3 VC-4 to VC-5 (PCFA)	2-3
2.2.3 Abandonment of Valve Chambers	2-3
3.0 Waste Management	3-1
4.0 Demobilization	4-1
5.0 References	5-1

List of Appendices

Appendix A	As-Built Drawings
Appendix B	Photograph Log
Appendix C	Waste Transportation and Disposal Documentation

Acronyms and Abbreviations

AFCEE	Air Force Center for Environmental Excellence
FISC	Fleet Industrial Supply Center
LEL	lower explosive limit
LF	linear feet
NASBP	Naval Air Station Barbers Point
PCFA	Pearl City Fuel Annex
VC	valve chamber

1.0 Introduction

This Technical Report documents the work performed (herein referred to as work or project) at two out-of-service cross-country pipelines (34,000 linear feet [LF] of 30-inch diameter JP-5 pipeline running from the Red Hill Complex to the Pearl City Fuel Annex [PCFA] and approximately 36,200 LF of 30-inch diameter and two 2,400 LF segments of 30-inch diameter JP-5 pipeline running from the PCFA to the former Naval Air Station Barbers Point [NASBP]) (herein referred to as the site or pipelines), at Pearl Harbor, Hawaii. Shaw Environmental, Inc. (herein referred to as the Contractor) has prepared this document for the Fleet Industrial Supply Center (FISC) under the Air Force Center for Environmental Excellence (AFCEE) Contract No. FA8903-04-D-8676, Task Order No. 0001 (Shaw Project No. 103187).

The work was performed in accordance with the following:

- Statement of Work entitled, “Pipeline Abandonment,” dated March 22, 2004
- Proposal for Services submitted by the Contractor, dated April 14, 2004
- Final Work Plan (prepared by Shaw under AFCEE Contract No. F41624-01-D-8541, Task Order No. 0105), dated December 9, 2003

The objective of the work performed was to safely abandoned-in-place the two out-of-service cross-country pipelines by physically isolating them from in-service piping, cleaning and emptying to a gas-free condition, and filling with an inert gas or grouting selected portions. Project activities were performed from August 2004 through October 2004. The scope of work performed at the two pipelines consisted of the following:

- Cleaned and drained the pipelines
- Disconnected the pipelines from the in-service piping and rendered the pipelines inert with nitrogen
- Disconnected the two 30-inch segments of pipeline from the 30-inch pipeline
- Abandoned the valve chambers (VC) associated with the pipelines
- Identified, characterized, managed, and disposed of waste generated during project activities

This technical report is organized as follows:

- **Section 1, “Introduction”**—Briefly describes the project scope of work.
- **Section 2, “Cross-Country Pipeline Field Work”**—Describes the activities performed to safely abandoned-in-place the two out-of-service cross-country pipelines.
- **Section 3, “Waste Management”**—Describes the management and disposal of project wastes.
- **Section 4, “Demobilization”**—Describes the demobilization tasks.
- **Section 5, “References”**—Provides a list of documents referenced in this technical report.

This addendum also contains the following appendices:

- **Appendix A, “As-Builts Drawings”**—Presents the as-built drawings.
- **Appendix B, “Photograph Log”**—Presents representative photographs of project activities.
- **Appendix C, “Waste Transportation and Disposal Documentation”**—Presents copies of the transportation and disposal documentation for project wastes.

2.0 Cross-Country Pipeline Fieldwork

This section describes the activities performed to prepare the pipelines, remove the pipeline contents, and clean and abandon the pipelines.

2.1 Pipeline from Red Hill Complex to PCFA

This section describes the specific work activities performed on the pipeline extending from the Red Hill Complex to the PCFA.

2.1.1 Pipeline Preparation

Personnel and equipment were mobilized to the site. A nitrogen trailer was staged at the Red Hill Complex. The bulk storage tanks were staged at the PCFA. Secondary containment systems were constructed around the bulk storage tanks.

Prior to any line breaking or pigging activities, the pipeline was accessed at multiple VCs to drain the pipeline contents. Lower explosive limit (LEL) levels were continuously monitored during the line breaking and valve chamber activities. A vacuum truck was used to remove the residual liquids to the extent possible.

Eight VCs were accessed and evaluated to determine whether removal was required. All valves were determined to be full-port valves so removal was not necessary. One pancake blind was removed from the pig receiver at PCFA.

2.1.2 Cleaning and Abandonment of Pipeline

Approximately 34,000 LF of (b) (3)-inch diameter JP-5 pipeline were cleaned using a pigging system. Pigs were driven through the pipeline using pressurized nitrogen. Pigs were launched from a (b) (3)-inch diameter launcher at Red Hill Complex Adit 6 and received at a (b) (3)-inch diameter receiver at PCFA. Three swab pigs and two disc pigs were used to clean pipeline and displace the contents. The pipeline contents were conveyed through the length of the pipeline and collected at PCFA. The pipeline was determined to be clean when no free liquid was observed at the receiver and the LEL was zero percent.

2.1.3 Abandonment of Valve Chambers

The spool at (b) (3) was removed and (b) (3)-inch blind flanges were installed on each end of the pipeline. A new manhole cover for (b) (3) was fabricated and installed.

All other spools and valves in the VCs were left in place. The metal valve chamber covers were closed and locked. The VCs were not backfilled or covered with a concrete cap because the pipeline may be transferred from FISC to the Board of Water Supply.

2.2 Pipeline from the Former NASBP to PCFA

This section describes the specific work activities performed on the pipeline from the former NASBP to the PCFA.

2.2.1 Pipeline Preparation

Personnel and equipment were mobilized to the site. A nitrogen trailer was initially staged at valve chamber (b) (6). The nitrogen trailer was transported to each subsequent valve chamber where pig launchers were installed. The bulk storage tanks were staged at the PCFA. Secondary containment systems were constructed around the bulk storage tanks.

Prior to any line breaking or pigging activities, the pipeline was accessed at multiple VCs to drain the pipeline contents. LEL levels were continuously monitored during the line breaking and valve chamber activities. A vacuum truck was used to remove the residual liquids to the extent possible.

Multiple valves were removed and replaced with spools to facilitate the pigging activities. Catch basins were placed beneath the valves to prevent any pipeline contents from contacting the surrounding work area. A vacuum truck removed any liquid collected in the catch basins. A total of nine valves were removed.

2.2.2 Cleaning and Abandonment of Pipeline

This section describes the cleaning and abandonment activities for the three segments of pipeline from the former NASBP to PCFA.

2.2.2.1 (b) (6) (NASBP) to (b) (6) (West Bank of West Loch)

Approximately 15,100 LF of 30-inch diameter JP-5 pipeline were cleaned using a pigging system from valve chamber (b) (6) at the former NASBP to valve chamber (b) (6) at the west bank of West Loch. The pigs were driven through the pipeline using pressurized nitrogen. The pigs were launched from an 30-inch diameter launcher at (b) (6) and received at an 30-inch diameter receiver at (b) (6). Eight swab pigs were used to clean the pipeline and displace the contents. The pipeline contents were conveyed through the length of the pipeline and collected at PCFA. The pipeline was determined to be clean when no free liquid was observed at the receiver and the LEL was zero percent. The pipeline was rendered inert with nitrogen and 30-inch blind flanges were installed on each end.

2.2.2.2 (b) (3) (A) (East Bank of West Loch)

The pipeline from valve chamber (b) (3) (A) to (b) (3) (A) at the east bank of West Loch consists of two 2,400 LF segments of 30-inch diameter JP-5 pipeline. The southernmost pipeline segment could not be pigged because a visible underwater leak was observed near (b) (3) (A). The leak repairs must be performed before this pipeline segment can be pigged.

The northernmost 30-inch diameter JP-5 pipeline segment was cleaned using a pigging system. The pigs were driven through the pipeline using pressurized nitrogen. The pigs were launched from a 30-inch diameter launcher at (b) (3) (A) and received at a 30-inch diameter receiver at (b) (3) (A). Three swab pigs and one pig train were used to clean the pipeline and displace the contents. The pipeline contents were conveyed through the length of the pipeline and collected at PCFA. The pig train consisted of a disc pig, a wire pig, and another disc pig separated by a surfactant. The pipeline was determined to be clean when no free liquid was observed at the receiver and the LEL was zero percent.

Each 30-inch diameter JP-5 pipeline was disconnected from the 30-inch diameter pipelines at (b) (3) (A) and (b) (3) (A). Blind flanges were installed on all ends. The cleaned pipeline was not filled with grout because the pipeline may be transferred from FISC to the Board of Water Supply.

2.2.2.3 (b) (3) (A) (PCFA)

Approximately 21,100 LF of 30-inch diameter JP-5 pipeline from valve chambers (b) (3) (A) to (b) (3) (A) at PCFA were cleaned using a pigging system. The pigs were driven through the pipeline using pressurized nitrogen. This segment of pipeline was pigged in two parts. The pigs were launched from an 30-inch diameter launcher at (b) (3) (A) and received at 30-inch diameter receivers at (b) (3) (A) and (b) (3) (A). Three swab pigs, one bare pig, and one pig train were used to clean the pipeline and to displace the contents between (b) (3) (A) and (b) (3) (A). The pipeline contents were conveyed through the length of the pipeline and collected at PCFA. One swab pig and two bare pigs were used to clean the pipeline and to displace the contents between (b) (3) (A) and (b) (3) (A). The pipeline contents were collected by a vacuum truck. The pipeline was determined to be clean when no free liquid was observed at the receivers and the LEL was zero percent. The pipeline was rendered inert with nitrogen and 30-inch blind flanges were installed on all ends.

2.2.3 Abandonment of Valve Chambers

All spools in the valve chambers were left in place. The valves that were removed during the pipeline preparation process were left disconnected in the valve chambers. The metal VC covers were closed and locked. The valve chambers were not backfilled or covered with a concrete cap because the pipeline may be transferred from FISC to the Board of Water Supply.

3.0 Waste Management

This section describes the characterization, handling, transport, and disposal of wastes generated while performing work at the site.

The bulk storage tanks were staged at PCFA. All pipeline contents collected by a vacuum truck were discharged and stored in these tanks. During pigging activities, the pipelines were connected to the tanks and pipeline contents were directly discharged into the tanks. Approximately 72,500 gallons of waste were removed from the pipeline.

Pipeline contents were characterized and profiled according to applicable regulations and disposal facility requirements. The analytical results and the Generator Waste Profile form were reviewed by NCTAMSPAC, Code N465NT. After receipt of the signed Generator Waste Profile form from NCTAMSPAC, Code N465NT, the waste was transported as non-hazardous waste to Philip Services Hawaii, Ltd. for disposal. Copies of the analytical results, approved Generator Waste Profile form, and transportation manifests are provided in Appendix C, “Waste Transportation and Disposal Documentation.”

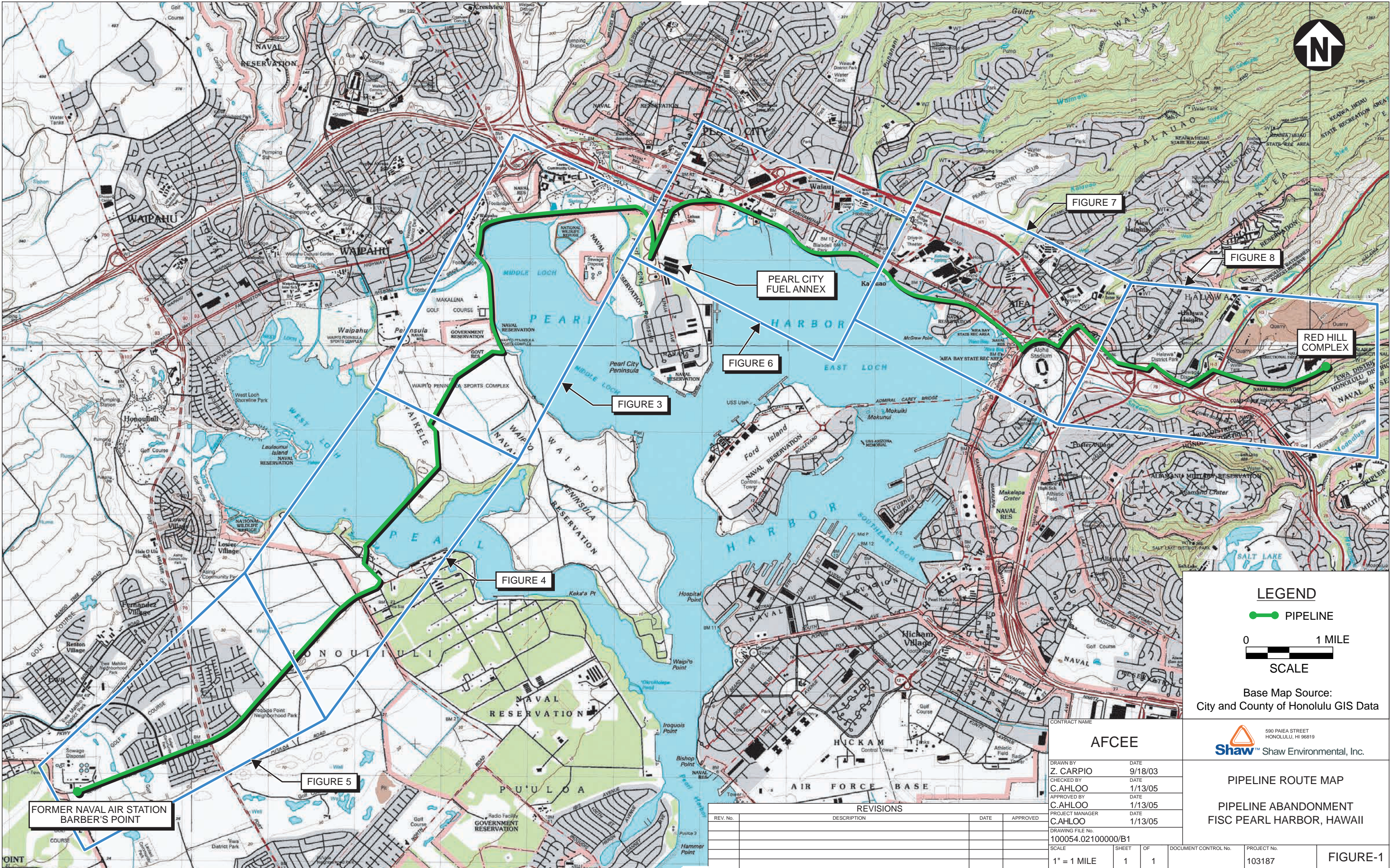
4.0 Demobilization

Following the transportation of wastes from the site, demobilization of personnel and equipment was completed. The facilities, staging area, and waste containment area were restored to the condition preceding construction activities.

5.0 References

Shaw Environmental, Inc., 2003, *Final Work Plan, Cleaning and Abandoning Cross Country Pipelines, Fleet Industrial Supply Center, Pearl Harbor, Hawaii*, December.

APPENDIX A AS-BUILT DRAWINGS



LEGEND

PIPELINE

0 1 MILE



SCALE

Base Map Source:
City and County of Honolulu GIS Data

AFCEE

DRAWN BY
Z. CARPIO
CHECKED BY
C.AHLOO
APPROVED BY
C.AHLOO
PROJECT MANAGER
C.AHLOO
DRAWING FILE No.
100054.02100000/B1
SCALE
1" = 1 MILE

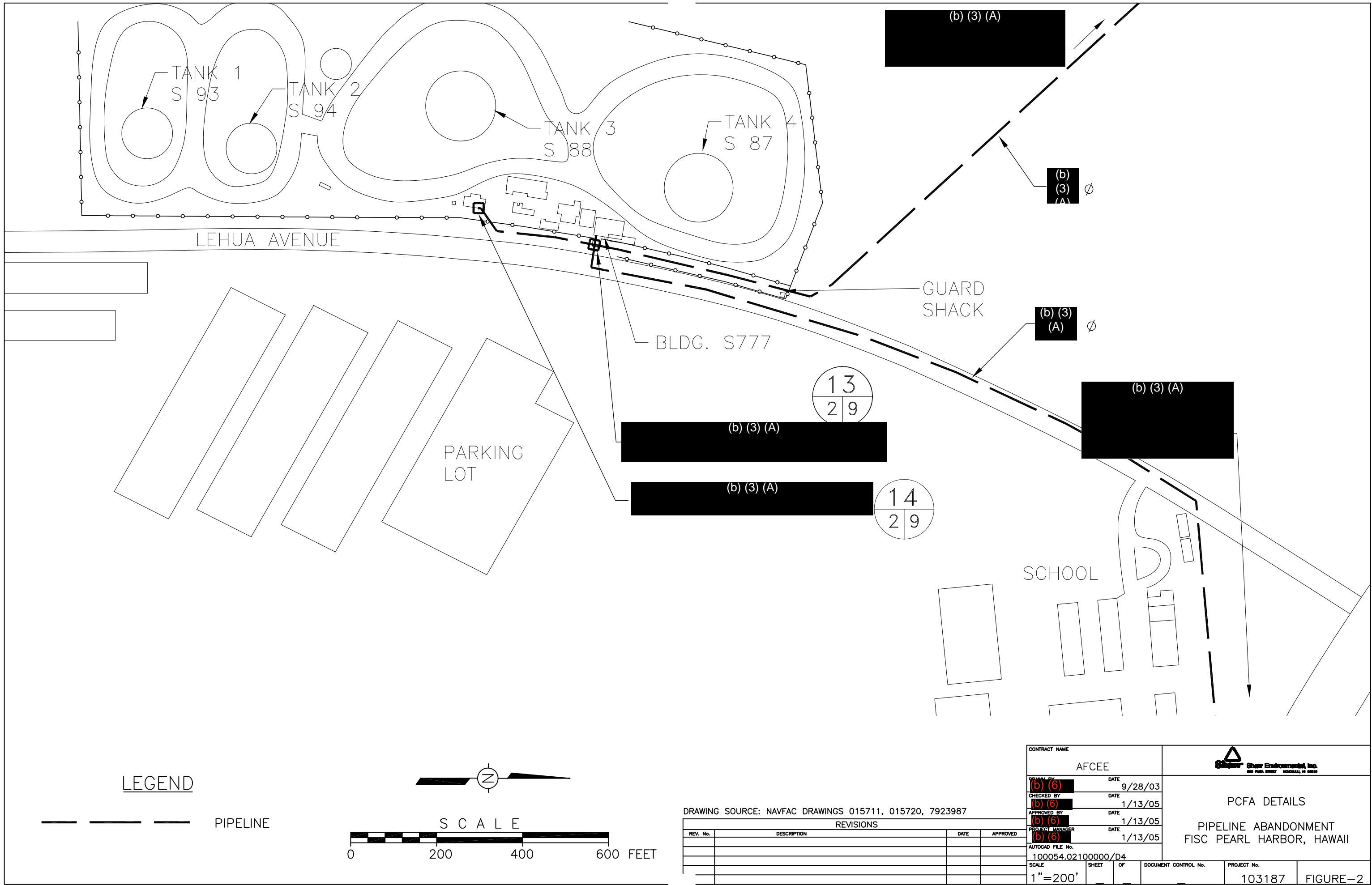
DATE
9/18/03
DATE
1/13/05
DATE
1/13/05
DATE
1/13/05
DATE
1/13/05

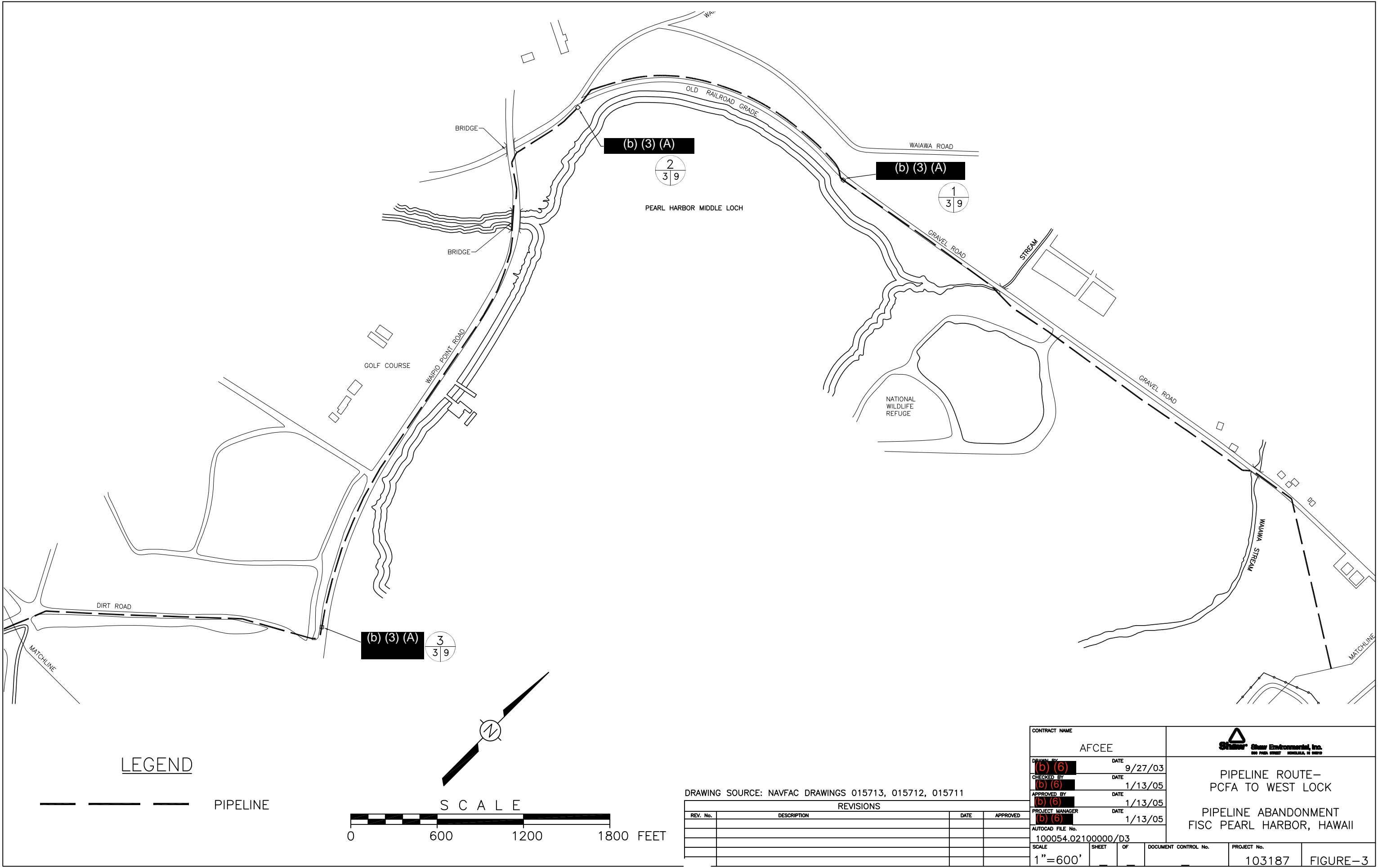
REVISIONS			
REV. No.	DESCRIPTION	DATE	APPROVED

PIPELINE ROUTE MAP

PIPELINE ABANDONMENT
FISC PEARL HARBOR, HAWAII

DOCUMENT CONTROL No.
PROJECT No.
103187
FIGURE-1

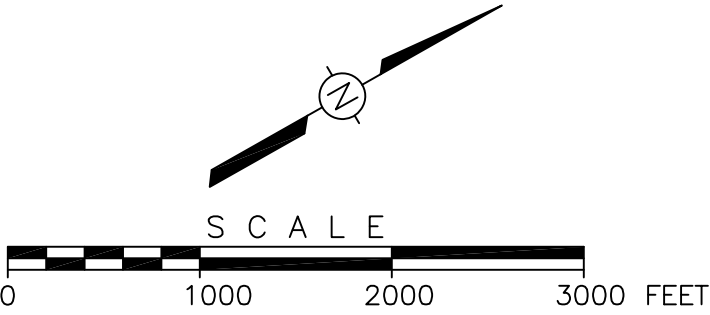







LEGEND

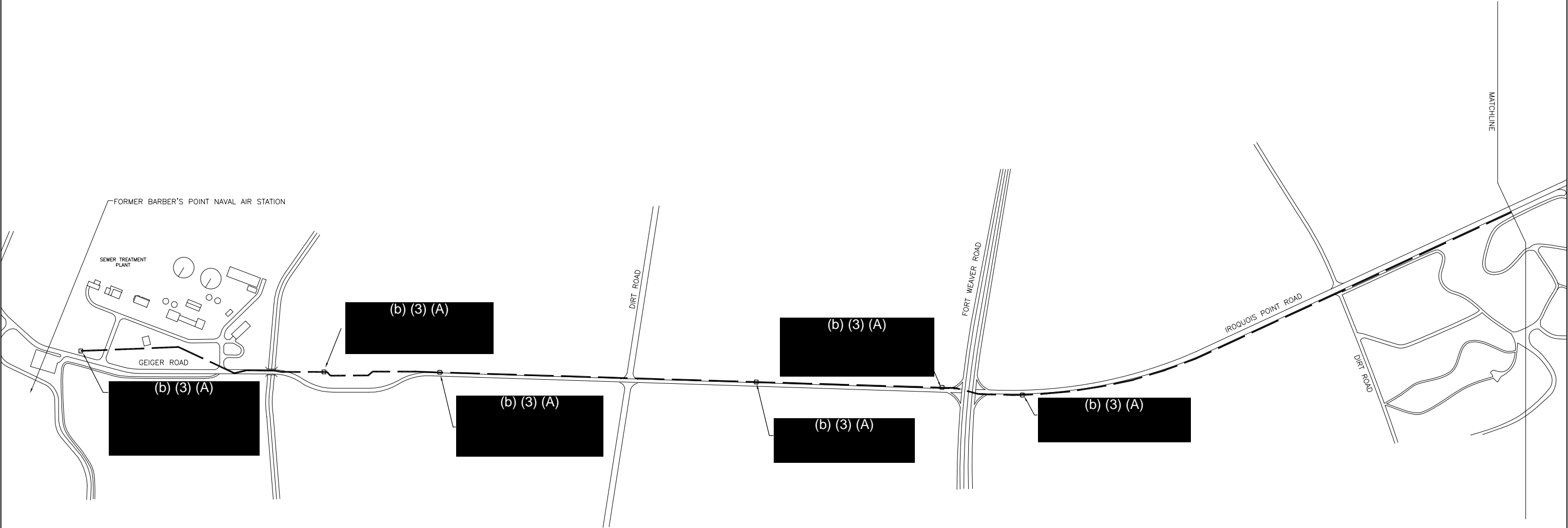
PIPELINE



DRAWING SOURCE: NAVFAC DRAWINGS 015716, 015715, 015714

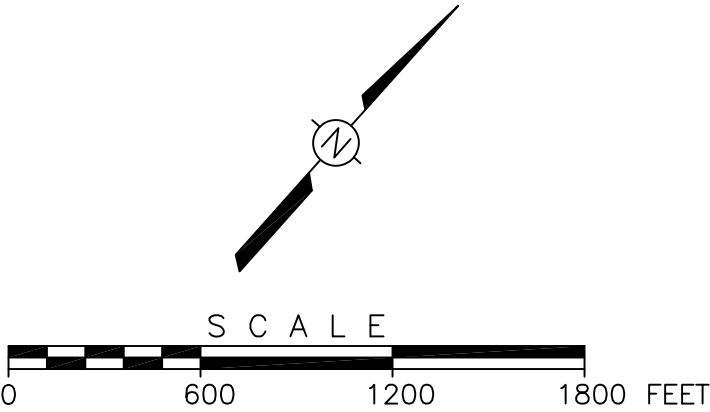
REVISIONS			
REV. No.	DESCRIPTION	DATE	APPROVED

CONTRACT NAME AFCEE			
DRAWN BY (b) (6)	DATE 9/26/03	PIPELINE ROUTE— WEST LOCK TO HONOLIULI PIPELINE ABANDONMENT FISC PEARL HARBOR, HAWAII	
CHECKED BY (b) (6)	DATE 1/13/05		
APPROVED BY (b) (6)	DATE 1/13/05		
PROJECT MANAGER (b) (6)	DATE 1/13/05		
AUTOCAD FILE No. 100054.02100000/D2			
SCALE 1"=1000'	SHEET 	OF 	DOCUMENT CONTROL No.
		PROJECT No. 103187	FIGURE—4




LEGEND

PIPELINE



DRAWING SOURCE: NAVFAC DRAWINGS 015717, 015716, 7920595

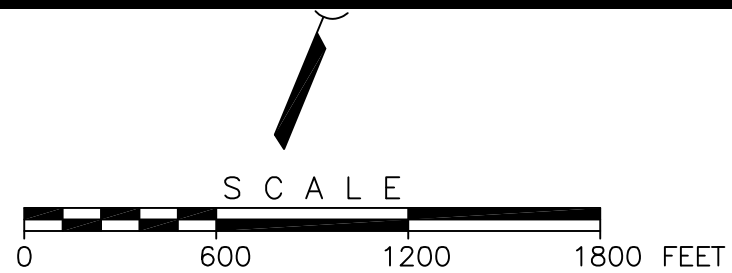
REVISIONS			
REV. No.	DESCRIPTION	DATE	APPROVED

CONTRACT NAME AFCEE					
DRAWN BY (b) (6)	DATE 9/25/03	PIPELINE ROUTE— HONOLIULI TO FORMER NASBP PIPELINE ABANDONMENT FISC PEARL HARBOR, HAWAII			
CHECKED BY (b) (6)	DATE 1/13/05				
APPROVED BY (b) (6)	DATE 1/13/05				
PROJECT MANAGER (b) (6)	DATE 1/13/05				
AUTOCAD FILE No. 100054.02100000/D1		DOCUMENT CONTROL No.		PROJECT No. 103187	FIGURE—5
SCALE 1"=600'	SHEET	OF			

(b) (3) (A)


LEGEND

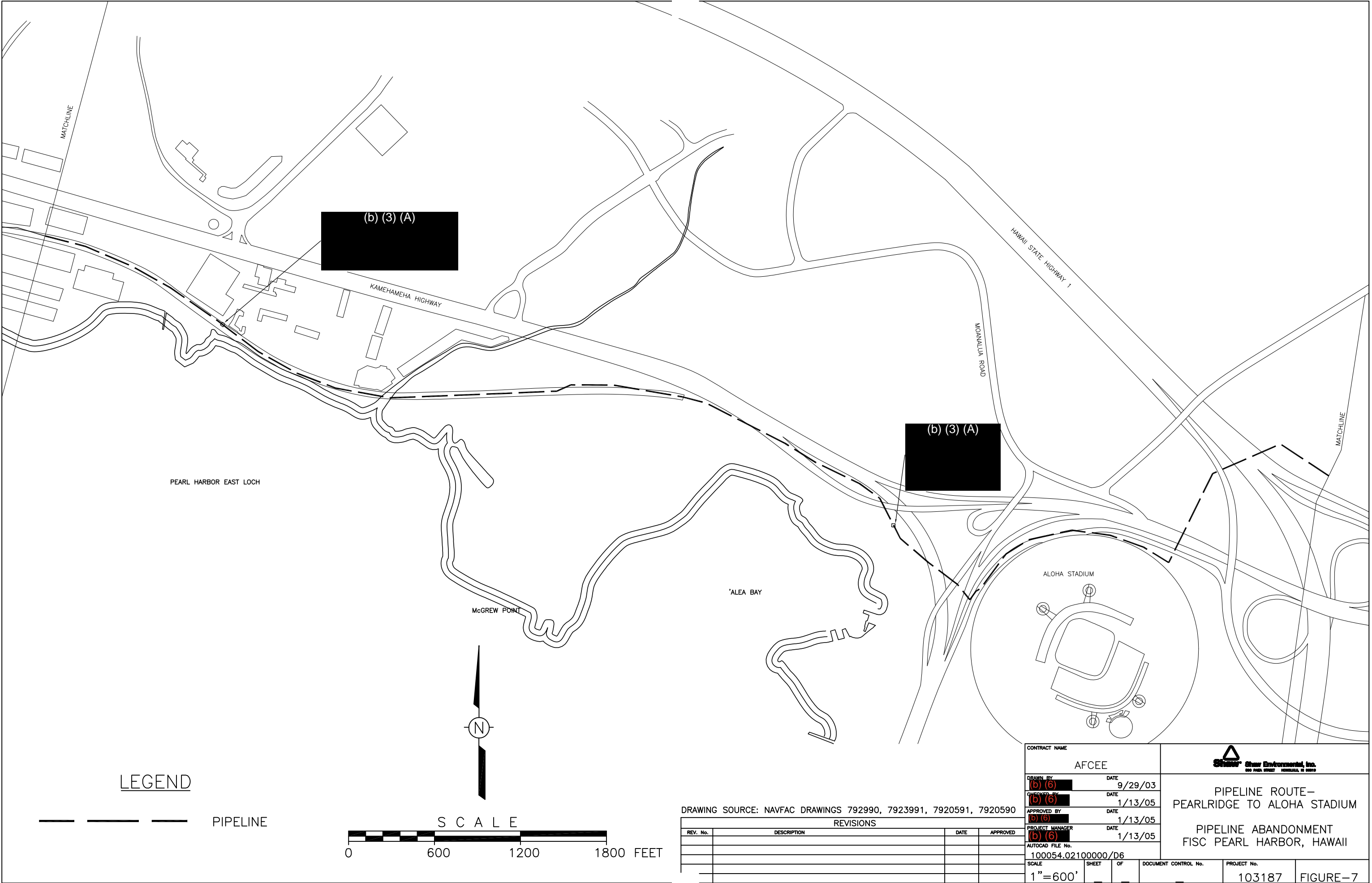
PIPELINE



DRAWING SOURCE: NAVFAC DRAWINGS 7923987, 7923988, 792389, 7920591

REVISIONS			
REV. No.	DESCRIPTION	DATE	APPROVED

CONTRACT NAME AFCEE			
DRAWN BY (b) (6)	DATE 9/29/03	PIPELINE ROUTE— PCFA TO PEARLRIDGE PIPELINE ABANDONMENT FISC PEARL HARBOR, HAWAII	
CHECKED BY (b) (6)	DATE 1/13/05		
(b) (6)	DATE 1/13/05		
PROJECT MANAGER (b) (6)	DATE 1/13/05		
AUTOCAD FILE No. 100054.02100000/D5			
SCALE 1"=600'	SHEET 	OF 	DOCUMENT CONTROL No.
		PROJECT No. 103187	FIGURE—6

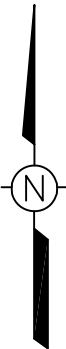


LEGEND

PIPELINE


S C A L E

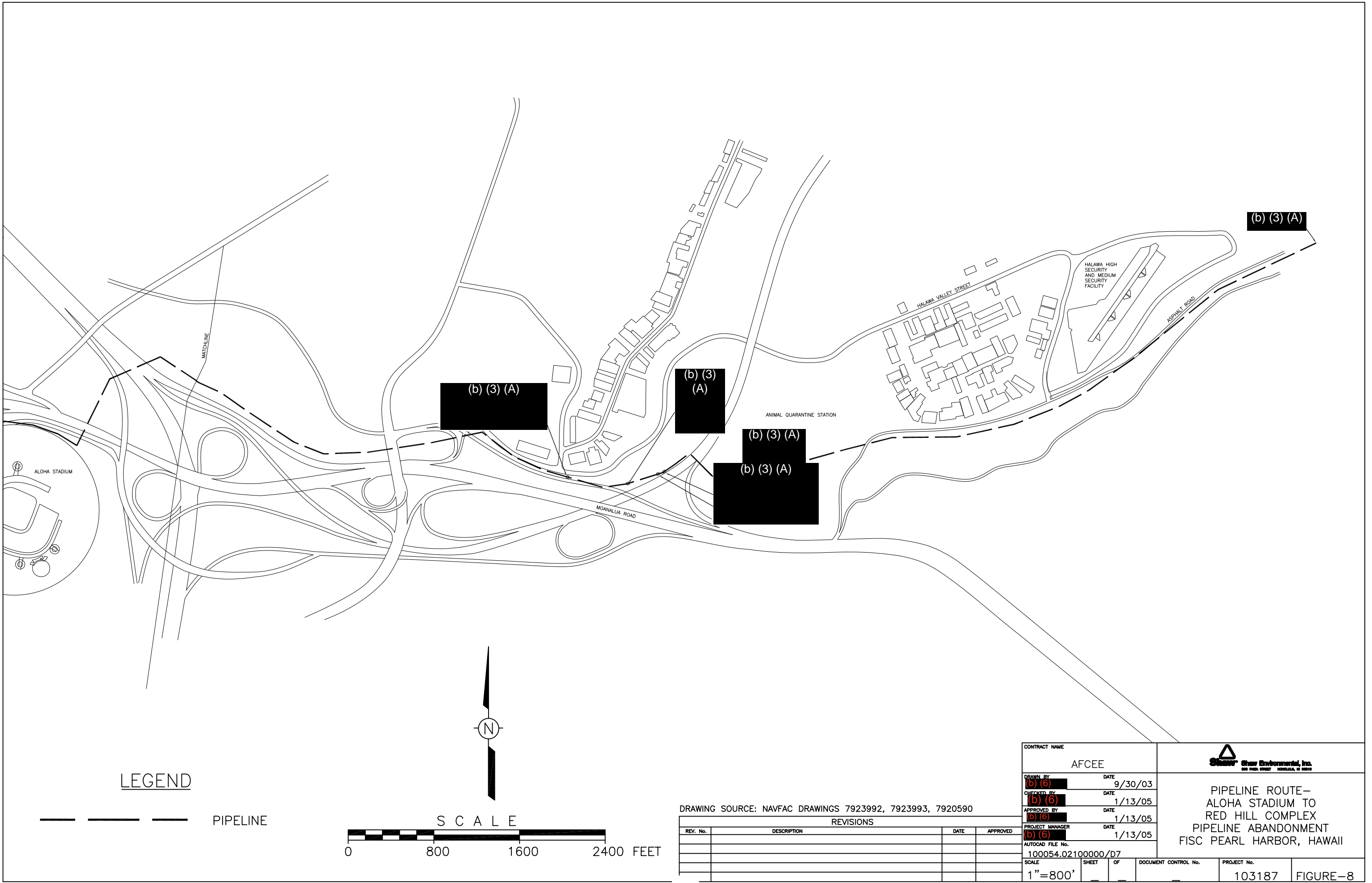
0 600 1200 1800 FEET



DRAWING SOURCE: NAVFAC DRAWINGS 792990, 7923991, 7920591, 7920590

REVISIONS			
REV. No.	DESCRIPTION	DATE	APPROVED


CONTRACT NAME		AFCEE		 PIPELINE ROUTE— PEARLRIDGE TO ALOHA STADIUM	
DRAWN BY		DATE			
(b) (6)		9/29/03		PIPELINE ABANDONMENT FISC PEARL HARBOR, HAWAII	
CHECKED BY		DATE			
(b) (6)		1/13/05		PROJECT MANAGER	
APPROVED BY		DATE			
(b) (6)		1/13/05		AUTOCAD FILE No.	
(b) (6)		1/13/05		100054.02100000/D6	
SCALE		SHEET	OF	DOCUMENT CONTROL No.	PROJECT No.
1"=600'					103187
					FIGURE-7



(b) (3) (A)

SOURCE: NAVFAC DRAWINGS 015719, 015728

REVISIONS			
REV. No.	DESCRIPTION	DATE	APPROVED

CONTRACT NAME		<div>Shaw Environmental, Inc. 480 PUNA DRIVE • HONOLULU, HI 96819</div>			
AFCEE					
DRAWN BY	DATE				
(b) (6)	10/1/03				
CHECKED BY	DATE				
(b) (6)	1/13/05				
APPROVED BY	DATE				
(b) (6)	1/13/05				
PROJECT NUMBER	DATE				
(b) (6)	1/13/05				
AUTOCAD FILE No.		100054.02100000/D9			
SCALE	SHEET	OF	DOCUMENT CONTROL No.	PROJECT No.	FIGURE—9
NONE	—	—	—	103187	


(b) (3) (A)

--	--	--	--	--

SOURCE: NAVFAC DRAWINGS 015719, 015728

REVISIONS			
REV. No.	DESCRIPTION	DATE	APPROVED

CONTRACT NAME		AFCEE	
DESIGNED BY	(b) (6)	DATE	10/1/03
CHECKED BY	(b) (6)	DATE	1/13/05
APPROVED BY	(b) (6)	DATE	1/13/05
PROJECT MANAGER	(b) (6)	DATE	1/13/05
AUTOCAD FILE No.			
100054.02100000/D9			
SCALE	SHEET	OF	DOCUMENT CONTROL No.
NONE			

	
VALVE CHAMBER DETAILS	
PIPELINE ABANDONMENT	
FISC PEARL HARBOR, HAWAII	

PROJECT No.	FIGURE—10
103187	

APPENDIX B PHOTOGRAPH LOG

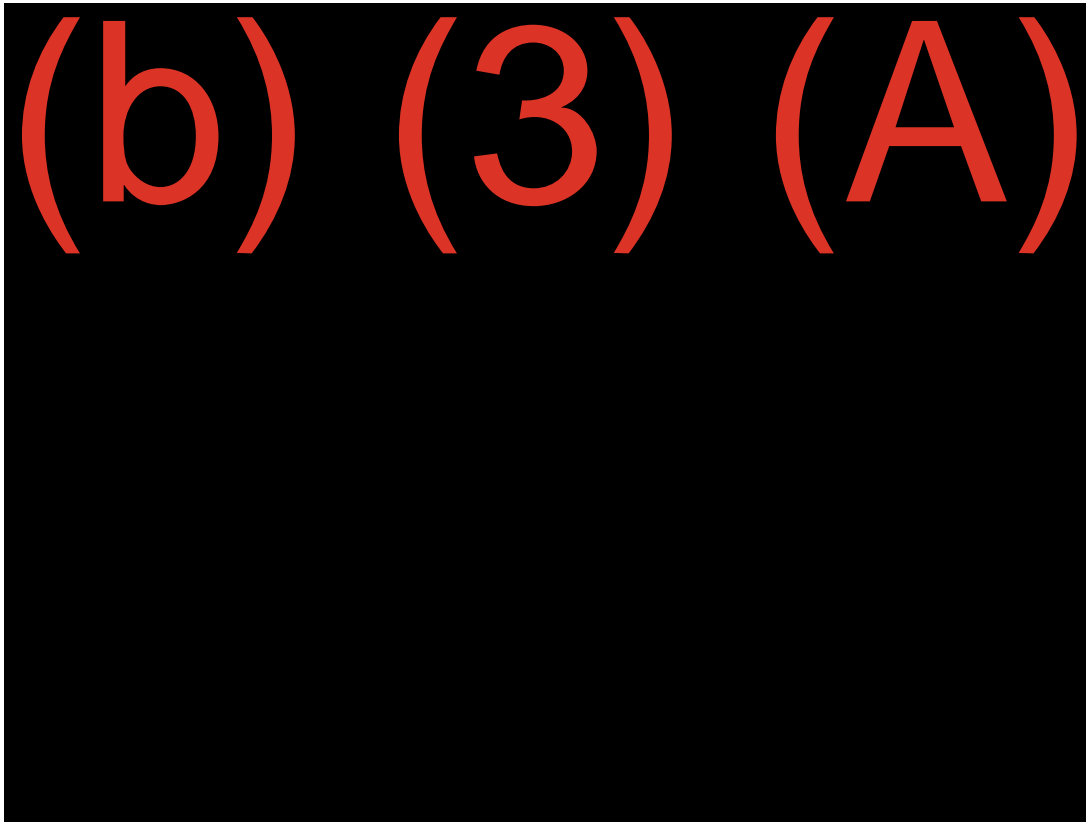


Photo 1: (b) (3) -inch bare pig in launcher at Red Hill Complex

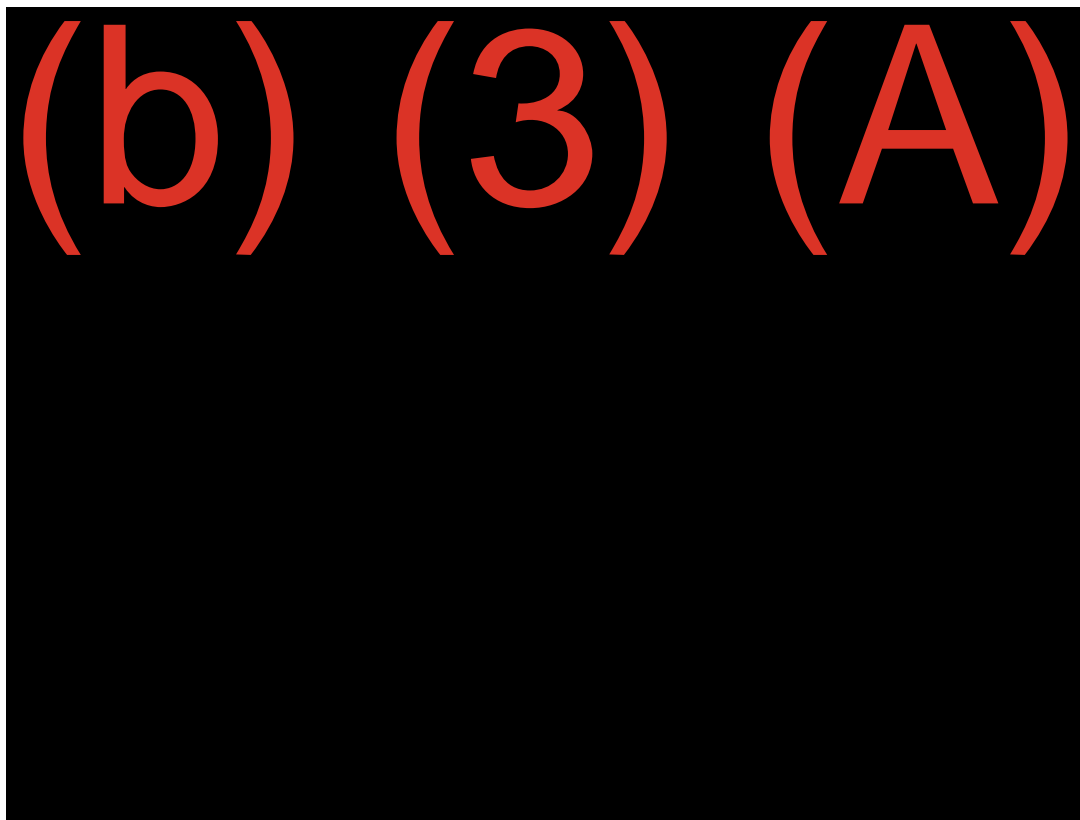


Photo 2: (b) (3) -inch bare pig in receiver at PCFA

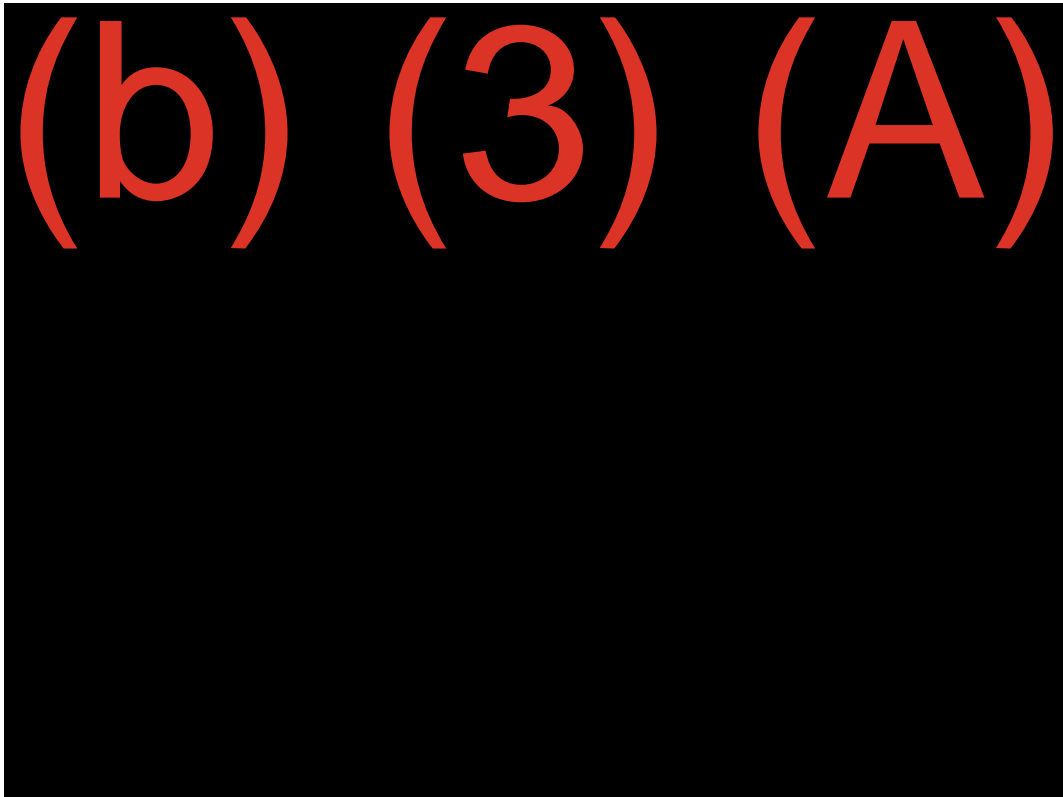


Photo 3: (b) (3) – spool was removed and (b) (3)-inch blind flanges were installed. No other valve chambers on the (b) (3)-inch pipeline were modified.

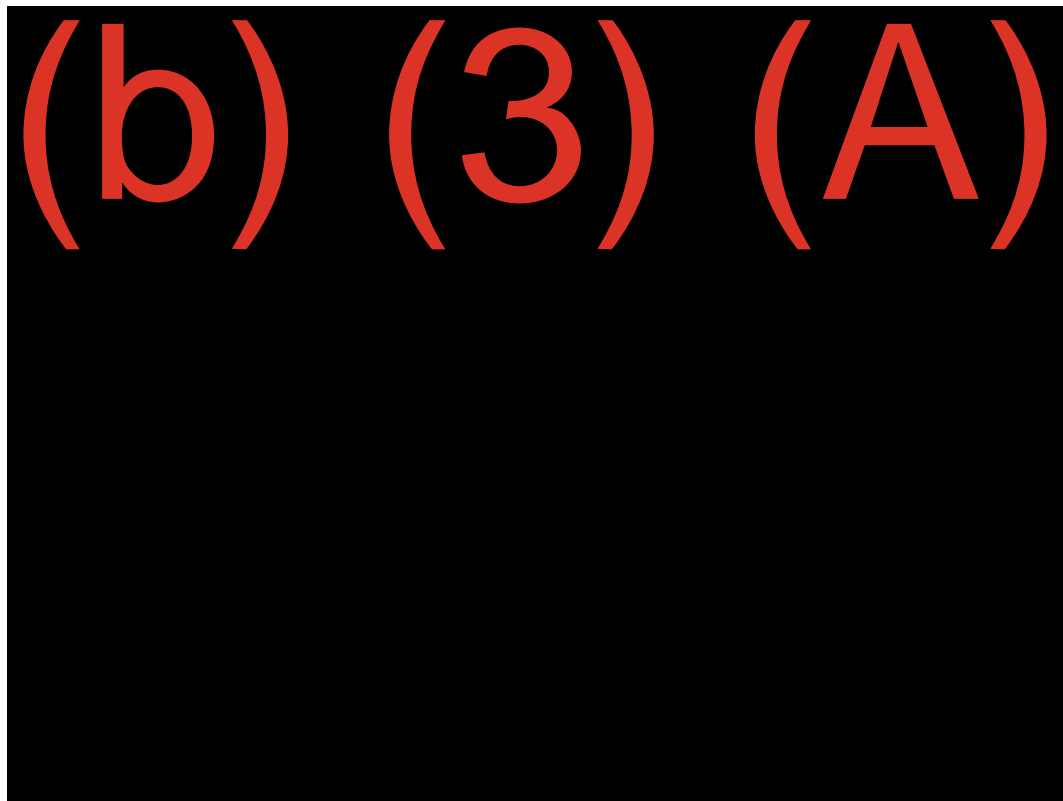


Photo 4: (b) (3) – typical valve and valve chamber on the (b) (3)-inch pipeline. No valves were removed on the (b) (3)-inch pipeline.

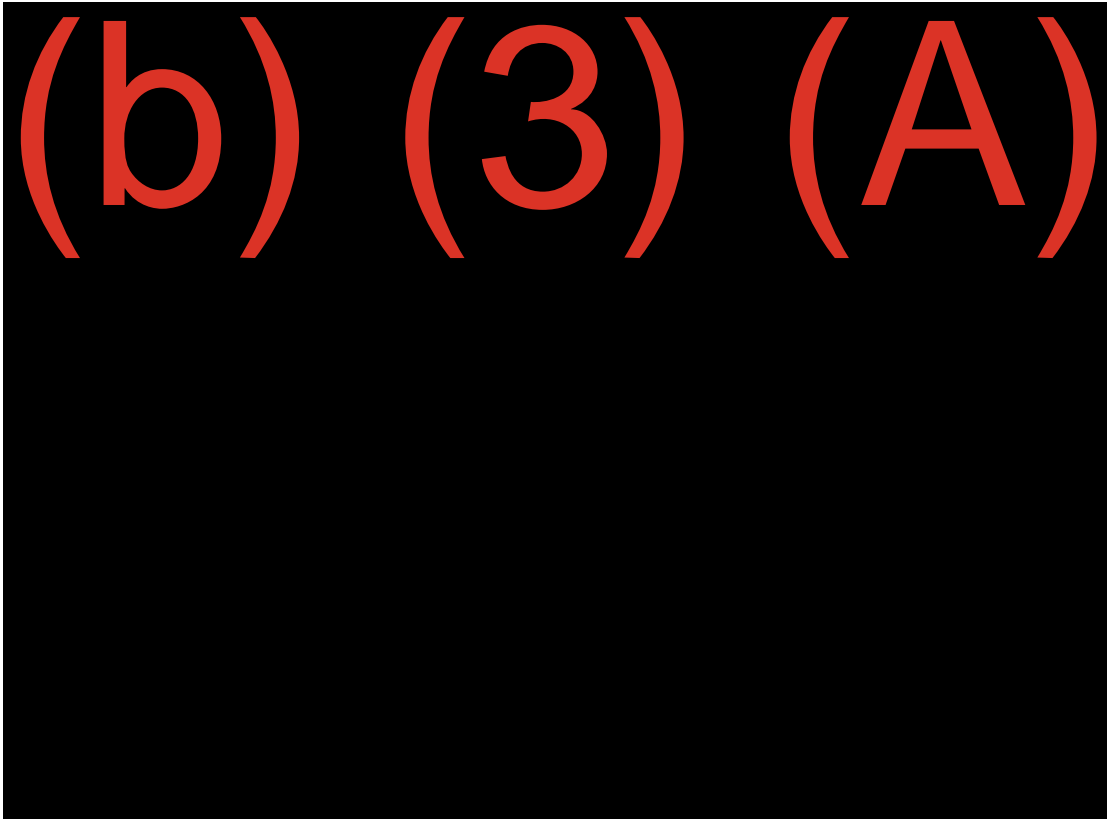


Photo 5: (b) (3) (A) – typical spool assembly on the 48-inch pipeline between (b) (3) (A)

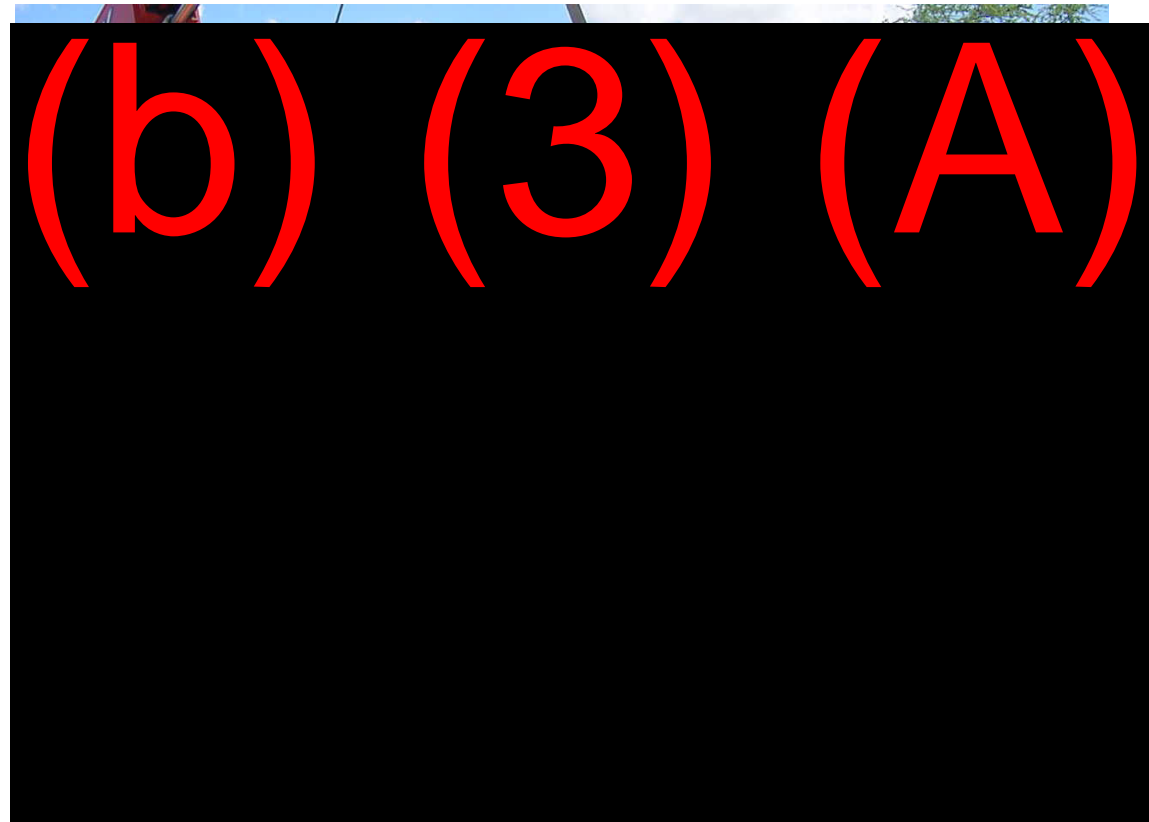


Photo 6: (b) (3) (A) – removal of spool prior to pigging activities

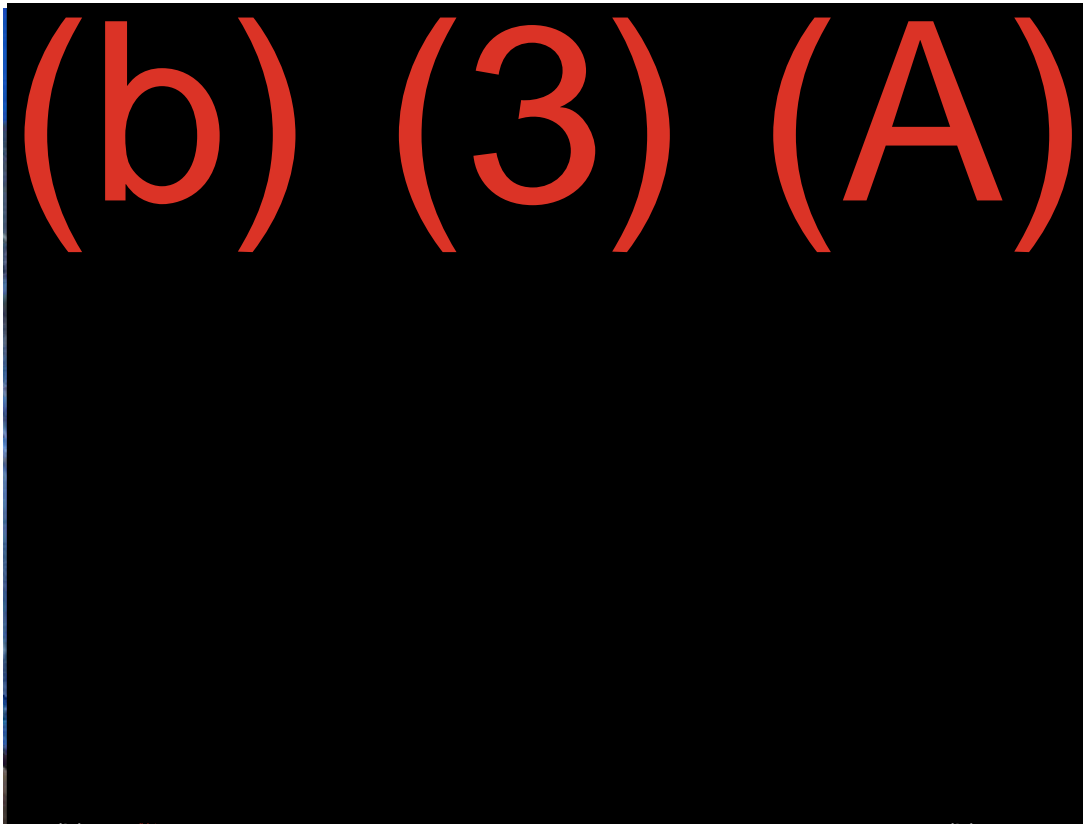


Photo 7: (b) (3) (A) – - inch bare pig arrives in receiver after being launched from (b) (3) (A)

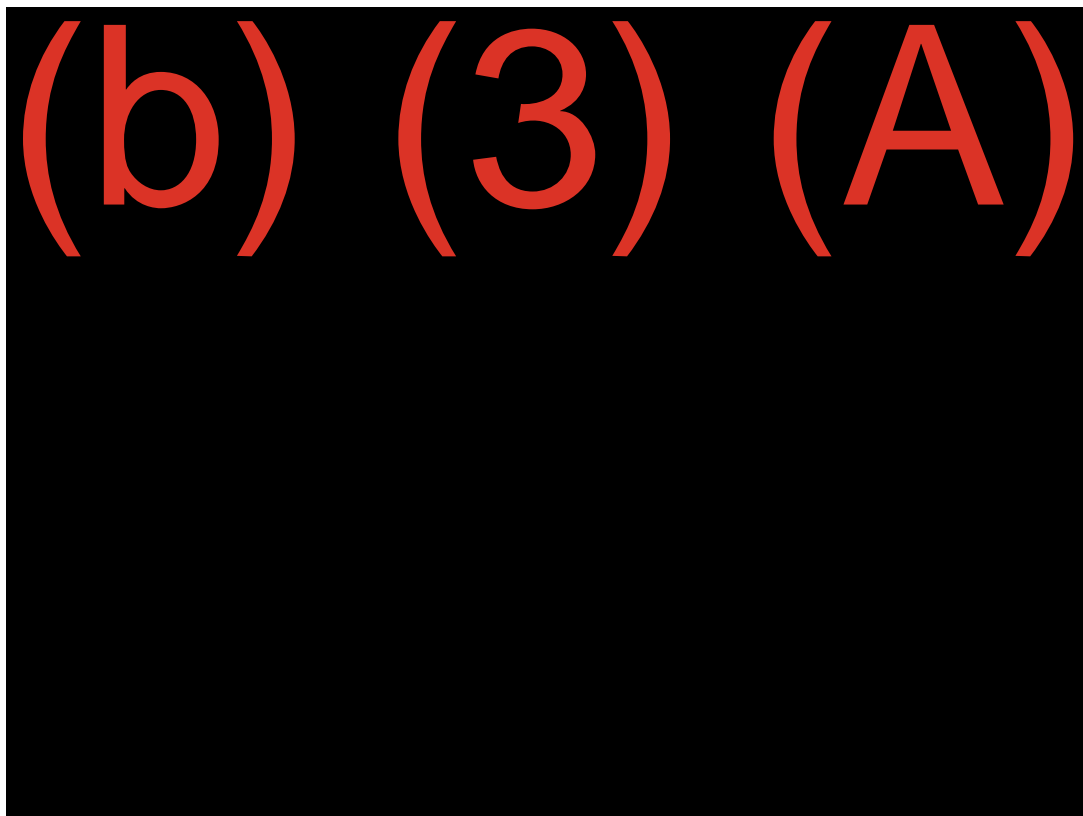


Photo 8: (b) (3) (A) – typical spool assembly on the 8-inch pipeline between (b) (3) (A) (PCFA). Removed valves and hardware were left in the valve chambers.

APPENDIX C

WASTE TRANSPORTATION AND DISPOSAL DOCUMENTATION

Sep 07 04 03:26p

Hawaii Marine

808 455-8230

p. 1

PHILIP SERVICES HAWAII, LTD.		GENERATOR WASTE PROFILE	
91-127 Makolea Street, Kapaolu, Hawaii 96707 Tel (808) 682-3033, Fax (808) 682-8026		Profile Sheet No. BW-01/25/01	
A. GENERATOR INFORMATION			
Name:	NCTAMSPAC	Consultant:	(b) (6) Code N465-NT
Site Address:	500 Center St. Wahiawa HI 96786-3050	EPA ID#:	H12000048892
Bus. Address:	Same	Phone:	808 653-9850
Contact:		FAX:	808 653-5000
B. TRANSPORTER INFORMATION			
Name:	Hawaii Marine Cleanings	EPA ID#:	H12000135582
Address:	96-1382 Waihona St #5 Pearl City	Driver:	(b) (6)
C. WASTE STREAM INFORMATION			
Waste Name:	Flush Water	Process Generating Waste:	Drainings Fuel Lines
Estimated Quantity:	Gal 5000	Method of Shipment:	<input checked="" type="checkbox"/> Bulk <input type="checkbox"/> Drum
		Rate:	<input checked="" type="checkbox"/> One time <input type="checkbox"/> weekly <input type="checkbox"/> monthly <input type="checkbox"/> annually
D. HAZARDOUS PROPERTIES			
US EPA Hazardous Waste Code:	Cyanides, Sulfides, Amines, PCBs and/or Phenolics present: <input type="checkbox"/> YES <input checked="" type="checkbox"/> NO		
E. PHYSICAL CHARACTERISTICS			
Color:	Various	Odor:	Petroleum
pH:	7.24	Gravity:	
% Solids:	2	% Water:	99%
% Oil:	1%		
F. CHEMICAL COMPOSITION			
1. COMPONENT	RANGE (%)	2. TCLP ORGANICS AND METALS (ppm / mg/L)	
Water	99%	Benzene: <0.05	Arsenic (As): <0.50
Oil	1%	Cadmium (Cd): <0.69	Chromium (Cr): <0.13
Sludge	2	Mercury (Hg): <0.50	Selenium (Se): <2.0
		Silver (Ag): <0.43	
		3. BTEX and TOTAL HALOGEN (ppm) < 1000	
		Benzene: ≤ 0.0455	Toluene: 0.142
		Total Xylene: 0.1434	Total Halogen: 2
		Ethyl benzene: ≤ 0.0392	TPH-Oil: 2
Additional Information Attached: See X Lab Analysis <input type="checkbox"/> MSDS <input checked="" type="checkbox"/> Other (Generator Knowledge)			
G. GENERATOR CERTIFICATION			
I hereby certify that this information is a complete and accurate representation of the subject waste and all known or suspected hazards have been disclosed. I further certify that the subject waste is NON-HAZARDOUS as defined by federal and state regulation. I understand that only non-hazardous wastes will be accepted at the Philip Services facility and no waste will be accepted if it is not properly characterized and properly packaged.			
Authorized Generator's Signature:	(b) (6)	Print Name:	(b) (6)
Title:	Environ Spec	Date:	9/10/04
H. ACCEPTANCE STATUS			
Status:	<input type="checkbox"/> Accepted <input type="checkbox"/> Rejected	Reasons for Rejection:	
Accepted/Rejected By:		Signature:	Date:

Dedicated to Environmental Excellence®



Oceanic Analytical Laboratory, Inc.

99-193 Aiea Heights Drive, Suite 121 Aiea, Hawaii 96701-3900
Telephone: (808)486-1435 (5227) Fax: (808)486-2456 E-mail: info@oceanic-labs.com

LABORATORY USE ONLY

LAB JOB NO. 0108091

LOCATION _____

CONTAINERS _____

Chain of Custody / Analysis Request Form

Report # (b) (6)		Project Identification		Indicate Analysis Requested											
Company Name <u>Hawaii Marine Cleaning</u>		Job Name <u>Red Hill Cross Country Pipe</u>		<div>PH TCLP - 8 METALS TPH Diesel BTEX TOX</div>											
Address <u>961382 Nankowas St</u>		Job Number _____													
City <u>PEARL CITY, HI</u> State <u>HI</u> ZIP <u>96782</u>		P.O. Number _____													
Phone <u>455-8226</u> Fax <u>455-8230</u>		Date of Sample Shipment <u>8/23/04</u> Date Report Needed <u>8/27</u>													
# of Samples in Shipment (b) (6)															
Item No.	Client Sample I.D.	COMP	GRAB	Matrix								Sampling		Number of Containers	Laboratory No.
				Water	Soil	Wastewater	Drinking water	Sludge	Liquid	Solid	Oil	Other	Preservation Method		
1	016		X	X								8/23	0830		0108091-1
2	016		X	X								"	"		
3	016		X	X								"	"		
4	016		X	X								"	"		
5															
6															
7															
8															
9															
10															
Released by (Print/Signature) (b) (6)		Date / Time Released <u>8/23/04 1435</u>		Delivery Method <u>Hand</u>		Received by (Print/Signature) (b) (6)		Company / Agency Affiliation <u>OCAL</u>		Date / Time Received <u>8/23/04 1435</u>		Condition Noted <u>23°C intact</u>			

Comments:

Please Check Box
☐ Dispose by Lab
☐ Return to Client
☐ Archive

Oceanic Analytical Laboratory, Inc.

Date: Sep 01, 2004

Work Order Sample Summary

Client:	Hawaii Marine Cleaning
Project:	Red Hill Cross Country Pipe
Work Order:	0408094
Date Received:	8/23/2004

Analytical Report for Samples

Lab Sample ID	Client Sample ID	Collection Date	Sample On Hold
0408094-01A	016	08/23/2004 08:30	<input type="checkbox"/>
0408094-01B	016	08/23/2004 08:30	<input type="checkbox"/>
0408094-01C	016	08/23/2004 08:30	<input type="checkbox"/>
0408094-01D	016	08/23/2004 08:30	<input type="checkbox"/>
0408094-02A	Trip Blank	08/18/2004 00:00	<input type="checkbox"/>

Oceanic Analytical Laboratory, Inc.

Date: Sep 01, 2004

Case Narrative

Client: Hawaii Marine Cleaning
Project: Red Hill Cross Country Pipe
Work Order: 0408094

Samples were analyzed using the methods outlined in the following references:

Test Methods for Evaluating Solid Waste, Physical/Chemical Methods, SW846, 3rd Edition.

All method blanks, laboratory spikes, and/or matrix spikes met quality assurance objectives.

G08: The fuel pattern in the gasoline range does not resemble the fuel standard used for quantitation.

D06: The sample chromatographic pattern does not resemble the fuel standard used for quantitation.

TOX analysis was performed by North Creek Analytical, Bothell.

Q02: The spike recovery/RPD for this QC sample is outside of established control limits due to sample matrix interference.

Oceanic Analytical Laboratory, Inc.

Date: Sep 01, 2004

Result Summary

Client: Hawaii Marine Cleaning
Work Order: 0408094
Project: Red Hill Cross Country Pipe
Lab ID: 0408094-01A

Client Sample ID: 016
Tag Number:
Collection Date: 08/23/2004 8:30
Matrix: AQUEOUS

Analytics	Result	Reporting Limit	Units	Dilution Factor	Date Prepared	Date Analyze	Batch ID	Qual Notes
GASOLINE RANGE ORGANICS (GRO)/BTEX				SW8015B/8021B				
Benzene	45.6	1.00	µg/L	1	8/25/04	8/25/2004 2:53:00 PM	R26755	
Ethylbenzene	34.2	1.00	µg/L	1				
GRO	861	100	µg/L	1				G08
m,p-Xylene	120	2.00	µg/L	1				
o-Xylene	73.4	1.00	µg/L	1				
Toluene	142	1.00	µg/L	1				
Sum: Chlorobenzene	92.2	65-125	%REC	1				

Qualifiers

ND - Not Detected at the Reporting Limit

J - Analyte detected below quantitation limits

B - Analyte detected in the associated Method Blank

* - Value exceeds Maximum Contaminant Level

S - Spike Recovery outside accepted recovery limits

R - RPD outside accepted recovery limits

E - Value above quantitation range

Oceanic Analytical Laboratory, Inc.

Date: Sep 01, 2004

Result Summary

Client: Hawaii Marine Cleaning		Client Sample ID: 016	
Work Order: 0408094		Tag Number:	
Project: Red Hill Cross Country Pipe		Collection Date: 08/23/2004 8:30	
Lab ID: 0408094-01B		Matrix: AQUEOUS	

Analyses	Result	Reporting Limit	Units	Dilution Factor	Date Prepared	Date Analyze	Batch ID	Qual Notes
ICP METALS, TCLP LEACHED				SW3015 SW1311/8010B				
Arsenic	ND	0.500	mg/L	1	8/26/04	8/26/2004 2:09:00 PM	10266	
Barium	ND	1.00	mg/L	1				
Cadmium	ND	0.0500	mg/L	1				
Chromium	ND	0.100	mg/L	1				
Lead	ND	0.200	mg/L	1				
Selenium	ND	0.500	mg/L	1				
Silver	ND	0.200	mg/L	1				
MERCURY, TCLP LEACHED				SW7470 SW1311/7470				
Mercury	ND	0.00250	mg/L	1	8/24/04	8/24/2004 3:01:00 PM	10266	
PH				E150.1				
pH	7.24	1.00	pH units	1	8/23/04	8/23/2004 4:17:00 PM	R28728	

Qualifiers

ND - Not Detected at the Reporting Limit

J - Analyte detected below quantitation limits

B - Analyte detected in the associated Method Blank

* - Value exceeds Maximum Contaminant Level

S - Spike Recovery outside accepted recovery limits

R - RPD outside accepted recovery limits

E - Value above quantitation range

Oceanic Analytical Laboratory, Inc.

Date: Sep 01, 2004

Result Summary

Client: Hawaii Marine Cleaning
 Work Order: 0408094
 Project: Red Hill Cross Country Pipe
 Lab ID: 0408094-01C

Client Sample ID: 016
 Tag Number:
 Collection Date: 08/23/2004 8:30
 Matrix: AQUEOUS

Analyses	Result	Reporting Limit	Units	Dilution Factor	Date Prepared	Date Analyze	Batch ID	Qual Notes
TPH (DIESEL AND OIL)				SW3510B SW8015M				
TPH (Diesel)	2460	556	µg/L	2	8/25/04	8/27/2004 10:58:00 A	10260	D06
TPH (Motor Oil)	ND	1110	µg/L	2				
Surr. O-Terphenyl	92.8	13-113.4	%REC	2				

Qualifiers

ND - Not Detected at the Reporting Limit

J - Analyte detected below quantitation limits

B - Analyte detected in the associated Method Blank

* - Value exceeds Maximum Contaminant Level

S - Spike Recovery outside accepted recovery limits

R - RPD outside accepted recovery limits

E - Value above quantitation range

Oceanic Analytical Laboratory, Inc.

Date: Sep 01, 2004

Result Summary

Client:	Hawaii Marine Cleaning	Client Sample ID:	016
Work Order:	0408094	Tag Number:	
Project:	Red Hill Cross Country Pipe	Collection Date:	08/23/2004 8:30
Lab ID:	0408094-01D	Matrix:	AQUEOUS

Analyses	Result	Reporting Limit	Units	Dilution Factor	Date Prepared	Date Analyze	Batch ID	Qual Notes
TOTAL ORGANIC HALOGENS						SW9820		
Total Organic Halides (TOX)	ND	0.0200	mg/L	1	8/31/04	8/31/2004	4H31051	

Qualifiers	ND - Not Detected at the Reporting Limit	S - Spike Recovery outside accepted recovery limits
	I - Analyte detected below quantitation limits	R - RPD outside accepted recovery limits
	B - Analyte detected in the associated Method Blank	E - Value above quantitation range
	* - Value exceeds Maximum Contaminant Level	

Sep 07 04 07:58a

Hawaii Marine

808 455-8230

p.1

PHILIP SERVICES HAWAII, LTD.		GENERATOR WASTE PROFILE	
91-127 Malakole Street, Kapolei, Hawaii 96707 Tel (808) 682-3033, Fax (808) 682-4026		Profile Sheet No. BW-01/25/01	
A. GENERATOR INFORMATION			
Name:	NCTAMSPAC	Contract:	(b) (6) N465-NT
Site Address:	500 Center St. Wahiawa, HI 96786-3050	EPA ID#:	HIR000048892
Bus. Address:	Same	Phone:	808 653-9250
Contact:		FAX:	808 653-5000
B. TRANSPORTER INFORMATION			
Name:	Hawaii Marine Cleaning	EPA ID#:	HIR000135582
Address:	90-1382 Naimona St. #55 Pearl City	Driver:	(b) (6)
C. WASTE STREAM INFORMATION			
Waste Name:	Oil & Water	Process Generating Waste:	Drain fuel line
Estimated Quantity:	Gal 2000	Method of Shipment:	<input checked="" type="checkbox"/> Bulk <input type="checkbox"/> Drum
		Rate:	<input checked="" type="checkbox"/> One time <input type="checkbox"/> weekly <input type="checkbox"/> monthly <input type="checkbox"/> annually
D. HAZARDOUS PROPERTIES			
US EPA Hazardous Waste Code:	Cyanides, Sulfides, Amines, PCBs and/or Phenolics present		<input type="checkbox"/> YES <input checked="" type="checkbox"/> NO
E. PHYSICAL CHARACTERISTICS			
Color:	Various	Odor:	Petroleum
pH:	7.24	Gravity:	
% Solid:	1%	% Water:	49%
% Oil:	50%		
F. CHEMICAL COMPOSITION			
1. COMPONENT		2. TCLF ORGANICS AND METALS (ppm / mg/L)	
Water	49%	Benzene:	<0.05
Oil	50%	Arsenic (As):	<0.50
Sludge	1%	Barium (Ba):	<100.0
		Chromium (Cr):	<0.13
		Lead (Pb):	<0.60
		Mercury (Hg):	<0.50
		Selenium (Se):	<2.0
		Silver (Ag):	<0.43
		3. BTEX and TOTAL HALOGEN (ppm) < 1000	
		Benzene:	< 0.0455
		Toluene:	< 0.142
		Ethyl benzene:	< 0.0342
		Total Xylene:	0.1934
		Total Halogen:	2
		TPH-Oil:	2
Additional Information Attached: <input checked="" type="checkbox"/> Normal Lab Analysis <input type="checkbox"/> MSDS <input checked="" type="checkbox"/> Other (Generator Knowledge)			
G. GENERATOR CERTIFICATION			
I hereby certify that this information is a complete and accurate representation of the subject waste and all known or suspected hazards have been disclosed. I further certify that the subject waste is NON-HAZARDOUS as defined by federal and state regulations. I understand that only non-hazardous waste will be accepted at the Philip Services facility and no waste will be accepted without a job order and properly executed manifest.			
Authorized Generator's Signature:		(b) (6)	Print Name: (b) (6) Title: Environ Spec Date: 9/10/04
H. ACCEPTANCE STATUS			
Status:	<input type="checkbox"/> Accepted <input type="checkbox"/> Rejected	Reasons for Rejection:	
Accepted/Rejected By:		Signature:	Date:

Dedicated to Environmental Excellence®



Oceanic Analytical Laboratory, Inc.

99-193 Aira Heights Drive, Suite 121 Ala, Hawaii 96701-3900
Telephone: (808) 486-LABS (5227) Fax: (808) 486-2456 E-mail: info@oceanic-labs.com

LABORATORY USE ONLY

LAB JOB NO. 0402687

LOCATION

CONTAINERS

Chain of Custody / Analysis Request Form

Report		Project Identification		Indicate Analysis Requested													
Company Name		Job Name															
Address		Job Number															
City, State, ZIP		P.O. Number															
Phone		Date of Sample Shipment		Date Results Needed													
Fax		Date of Sample Shipment		Date Results Needed													
# of Samples in Shipment		Date of Sample Shipment		Date Results Needed													
Item No.	Client Sample I.D.	COMP	GRAB	Matrix							Preservation Method	Sampling		Number of Containers			
				Water	Soil	Wastewater	Drinking water	Sludge	Liquid	Solid		Oil	Other		Date	Time	
1	08	X											9/18	0915	2	Spec. Fuel Analysis	
2																	Laboratory No - (1)
3																	
4																	
5																	
6																	
7																	
8																	
9																	
10																	
Released by (Print/Signature)		Date / Time Released		Delivery Method		Received by (Print/Signature)		Company / Agency Affiliation		Date / Time Received		Condition Noted					
(9) (g)		9/18 11:025		Hand		(9) (g)		GAR		9/18/04 1025		Pat 162					
												Gel					

Comments

Please Check Box
☐ Dispose by Lab
☐ Return to Client
☐ Archive

August 24, 2004

(b) (6)

Hawaii Marine Cleaning
96-1382 Waihona Street, B5
Pearl City, HI 96782
TEL: (808) 455-8226
FAX: (808) 455-8230

RE: Red Hill Cross Country, #598

Work Order No.: 0408087

Dear (b) (6)

Oceanic Analytical Laboratory, Inc. received/relogged 1 sample on 8/18/2004 10:25 AM for the analyses presented in the following report.

The total number of pages in the report including this Cover letter, Sample Summary, Case Narrative, Result Summary, QC Summary, Chain of Custody form(s), Relog Request Form and/or any attachment(s) is 9.

All data presented in the following report are relevant only to the samples as received and to the items tested by the laboratory. All data are calculated based on wet weight except where noted in the reporting unit. The report meets all applicable NELAC standards and shall not be reproduced except in full, without the written approval of the laboratory.

There were no problems with the analyses and all data for associated QC met laboratory specifications except where noted in the Case Narrative.

Applicable samples will be stored at no extra charge for a period of 30 days following the final report. Samples will be properly disposed of after 30 days, unless notified otherwise in writing.

If you have any questions regarding these tests results, please feel free to call.

Very truly yours,
OCEANIC ANALYTICAL LABORATORY, INC.

(b) (6)

Laboratory Manager

Oceanic Analytical Laboratory, Inc.

Date: Aug 24, 2004

Work Order Sample Summary

Client: Hawaii Marine Cleaning
Project: Red Hill Cross Country, #598
Work Order: 0408087
Date Received: 8/18/2004

Analytical Report for Samples

Lab Sample ID	Client Sample ID	Collection Date	Sample On Hold
00000000000000000000	00	00-00-0000 00:00	<input type="checkbox"/>

Oceanic Analytical Laboratory, Inc.

Date: Aug 24, 2004

Case Narrative

Client:	Hawaii Marine Cleaning
Project:	Red Hill Cross Country, #598
Work Order:	0408087

Samples were analyzed using the methods outlined in the following references:

Test Methods for Evaluating Solid Waste, Physical/Chemical Methods, SW846, 3rd Edition.

All method blanks, laboratory spikes, and/or matrix spikes met quality assurance objectives.

C01: To reduce matrix interference, the sample extract has undergone sulfuric acid cleanup, SW3665A, which is specific to hydrocarbon interference.

C02: To reduce matrix interference, the sample extract has undergone tetrabutylammonium (TBA) sulfite cleanup, SW3660B, which is specific to sulfur interference.

Oceanic Analytical Laboratory, Inc.

Date: Aug 24, 2004

Result Summary

Client: Hawaii Marine Cleaning
 Work Order: 0408087
 Project: Red Hill Cross Country, #598
 Lab ID: 0408087-01A

Client Sample ID: 08
 Tag Number:
 Collection Date: 08/18/2004 0:00
 Matrix: OIL

Analyses	Result	Reporting Limit	Units	Dilution Factor	Date Prepared	Date Analyze	Batch ID	Qual Notes
IGNITABILITY								
SW1010								
<u>Ignitability</u>	<200	77.0	°F	1	8/24/04	8/24/2004 12:00:00 PM	R26736	
PCBS IN OIL OR SOLID WASTE								
SW3580A SW8082								
Aroclor 1016	ND	1.00	mg/Kg	1	8/18/04	8/18/2004 4:27:00 PM	10225	C01/C02
Aroclor 1221	ND	1.00	mg/Kg	1				
Aroclor 1232	ND	1.00	mg/Kg	1				
Aroclor 1242	ND	1.00	mg/Kg	1				
Aroclor 1248	ND	1.00	mg/Kg	1				
Aroclor 1254	ND	1.00	mg/Kg	1				
Aroclor 1260	ND	1.00	mg/Kg	1				
Surr: Decachlorobiphenyl	112	50-150	%REC	1				
SPEC FUEL METALS								
SW 3051 SW6010B								
Arsenic	ND	5.00	mg/Kg	1	8/23/04	8/24/2004 12:46:00 PM	10242	
Beryllium	ND	0.120	mg/Kg	1				
Cadmium	ND	2.00	mg/Kg	1				
Chromium	ND	5.00	mg/Kg	1				
Lead	ND	5.00	mg/Kg	1				
Sulfur (screen)	ND	0.0200	mg/Kg	1				
TOTAL HALOGEN SCREEN								
SW9077								
<u>Total Halogen Screen</u>	<1000	1000	mg/L	1	8/24/04	8/24/2004 4:00:00 PM	R26734	

Qualifiers ND - Not Detected at the Reporting Limit
 J - Analyte detected below quantitation limits
 B - Analyte detected in the associated Method Blank
 * - Value exceeds Maximum Contaminant Level

S - Spike Recovery outside accepted recovery limits
 R - RPD outside accepted recovery limits
 E - Value above quantitation range

~~Estimate~~ Pipeline

NON-HAZARDOUS WASTE MANIFEST		1. Generator's US EPA ID No. HI R000004889200107	Manifest Doc. No. 200107	2. Page 1 of
3. Generator's Name and Mailing Address NCTAMSPAC (Attn: (b) (6) Code N465NT) 500 Center St. Wahiawa, HI. 96786-3050		41371 51515		
4. Generator's Phone (808) 653-9850				
5. Transporter 1 Company Name HAWAII Marine Cleaning		6. US EPA ID Number HI R0000135582	A. Transporter's Phone (808) 455-8226	
7. Transporter 2 Company Name		8. US EPA ID Number	B. Transporter's Phone	
9. Designated Facility Name and Site Address Philips Services HAWAII LTD 91-127 MAIA KOLE ST. KAPOLEI, HI. 96707		10. US EPA ID Number HI R0000000927	C. Facility's Phone (808) 682-3033	
11. Waste Shipping Name and Description		12. Containers No. Type	13. Total Quantity	14. Unit Wt/Vol
a. NOT Regulated by DOT Oily Water		001	TT	5000 G
b.				
c.				
d.				
D. Additional Descriptions for Materials Listed Above H. Clor 200ppm 24 Hr. SPILL Response Penco water from Red Hill 545-5195		E. Handling Codes for Wastes Listed Above		
15. Special Handling Instructions and Additional Information 99% Water, 1% Oils				
16. GENERATOR'S CERTIFICATION: I certify the materials described above on this manifest are not subject to federal regulations for reporting proper disposal of Hazardous Waste.				
Printed/Typed Name (b) (6) ON BEHALF OF GENERATOR		Signature (b) (6)		Month Day Year 9 15 04
17. Transporter 1 Acknowledgement of Receipt of Materials		Signature (b) (6)		Month Day Year 09 15 04
18. Transporter 2 Acknowledgement of Receipt of Materials		Signature		Month Day Year
19. Discrepancy Indication Space				
20. Facility Owner or Operator: Certification of receipt of waste materials covered by this manifest except as noted in Item 19. PSC WWTP				
Printed/Typed Name (b) (6)		Signature (b) (6)		Month Day Year 04 15 04

~~HAZARDOUS~~ Pipe Line

**NON-HAZARDOUS
WASTE MANIFEST**

1. Generator's US EPA ID No.

H.I.R.000.048.892

Manifest Doc. No.

00.1.02

2. Page 1
of

3. Generator's Name and Mailing Address

NCTAMSPAC (AHN: (b) (6) Code N465NT)
500 center St. Wahiawa Hi. 96786-3050

4. Generator's Phone

(808) 453-9850

5. Transporter 1 Company Name

Hawaii Marine Cleaning LLC

6.

US EPA ID Number

H.I.R.000.1355.82

A. Transporter's Phone

808 455-8226

7. Transporter 2 Company Name

8.

US EPA ID Number

B. Transporter's Phone

9. Designated Facility Name and Site Address

Philip Services
41-127 Mala Koke St.
Kapekape Hi. 96707

10.

US EPA ID Number

H.I.R.000.000.09.27

C. Facility's Phone

(808) 682-3033

11. Waste Shipping Name and Description

a.

NOT Regulated by DOT
Oily WATER

b.

c.

d.

12. Containers

No.

Type

13. Total
Quantity

14. Unit
Wt/Vol

001 TT

5.00.0 G

D. Additional Descriptions for Materials Listed Above

H. clou 200 ppm

99% WATER, 1% Oils
analysis on file

E. Handling Codes for Wastes Listed Above

15. Special Handling Instructions and Additional Information

24 hr. Spill Response (Penco)
808 545-5195

16. GENERATOR'S CERTIFICATION: I certify the materials described above on this manifest are not subject to federal regulations for reporting proper disposal of Hazardous Waste.

Printed/Typed Name (b) (6)

(SAW)

Signature

(b) (6)

Month Day Year

9 15 04

17. Transporter 1 Acknowledgement of Receipt of Materials

(b) (6)

Signature

(b) (6)

Month Day Year

9 15 04

18. Transporter 2 Acknowledgement of Receipt of Materials

Printed/Typed Name

Signature

Month Day Year

19. Discrepancy Indication Space

20. Facility Owner or Operator: Certification of receipt of waste materials covered by this manifest except as noted in Item 19.

PSC WWTTP

Printed/Typed Name

(b) (6)

Signature

(b) (6)

Month Day Year

09 15 04

PipeLine

**NON-HAZARDOUS
WASTE MANIFEST**

1. Generator's US EPA ID No.

H.I.R.00.00480.92

Manifest Doc. No.

0.0.1.0.3

2. Page 1
of

3. Generator's Name and Mailing Address

NCTAMSPAC (Attn: (b) (6) Code N46ENT)
500 Center St. Wahiawa HI 96786-3050

4. Generator's Phone (808) 653-9850

5. Transporter 1 Company Name

Hawaii Marine Cleaning LLC

6. US EPA ID Number

H.I.R.000.1.3.5.5.8.2

A. Transporter's Phone

(808) 455-8226

7. Transporter 2 Company Name

8. US EPA ID Number

B. Transporter's Phone

9. Designated Facility Name and Site Address

Philip Services Hawaii, LTD
91-127 Malakole St
Kapolei HI 96707

10. US EPA ID Number

H.I.R.00.0000.9.2.7

C. Facility's Phone

(808) 682-3037

11. Waste Shipping Name and Description

a.

NOT Regulated by DOT
Oily Water

12. Containers
No. Type

0.0.1.1.1

13. Total
Quantity

4500 gal
5000

14. Unit
Wt/Vol

5

D. Additional Descriptions for Materials Listed Above

99% Water, 1% Oils

E. Handling Codes for Wastes Listed Above

15. Special Handling Instructions and Additional Information

(808)
24 HR Spill Response 545-5195 (PENCO)

16. GENERATOR'S CERTIFICATION

I certify that the materials described above on this manifest are not subject to federal regulations for reporting proper disposal of Hazardous Waste.

Printed/Typed Name

(b) (6)
FOR GENERATOR

Signature

(b) (6)

Month Day Year
9 16 04

17. Transporter 1 Acknowledgement of Receipt of Materials

(b) (6)

(b) (6)

Month Day Year
9 16 04

18. Transporter 2 Acknowledgement of Receipt of Materials

Printed/Typed Name

Signature

Month Day Year
9 16 04

19. Discrepancy Indication Space

20. Facility Owner or Operator Certification of receipt of waste materials covered by this manifest except as noted in Item 19.

Printed/Typed Name

(b) (6)

Signature

(b) (6)

Month Day Year
09 16 04

PipeLine

NON-HAZARDOUS WASTE MANIFEST		1. Generator's US EPA ID No. H.1.R.0.0.0.0.4.8.8.9.2	Manifest Doc. No. 0.0.1.04	2. Page 1 of
3. Generator's Name and Mailing Address NCTAMSPAC (Attn: (b) (6) code N465NT) 500 Center St. Wahiawa Hi. 96786-3050		4. Generator's Phone (808) 653-9850		
5. Transporter 1 Company Name Hawai Marine Cleaning LLC		6. US EPA ID Number H.1.R.0.0.0.1.3.5.5.8.2	A. Transporter's Phone (808) 455-8226	
7. Transporter 2 Company Name		8. US EPA ID Number	B. Transporter's Phone	
9. Designated Facility Name and Site Address Phillip Services Hawaii, LTD. 91-127 Makole Street. Kapolei, Hi. 96707		10. US EPA ID Number H.1.D.9.8.2.0.4.1.4.0.2	C. Facility's Phone (808) 682-3033	
11. Waste Shipping Name and Description			12. Containers No. Type	13. Total Quantity
a. Waste Fuel, Aviation TURBINE ENGINE UN 1863 FLAMMABLE			0.01 T.T	2500 30.0.0.
b.				
c.				
d.				
D. Additional Descriptions for Materials Listed Above 75% waste water HYDOLAP 200 ppm 25% Fuel Aviation TURBINE ENGINE			E. Handling Codes for Wastes Listed Above	
15. Special Handling Instructions and Additional Information 24 hr Spill Response (PenCO) 808 545-5195 SEE ATTACHED PROFILE AND "ANALYTICAL"				
16. GENERATOR'S CERTIFICATION: I certify the materials described above on this manifest are not subject to federal regulations for reporting proper disposal of Hazardous Waste.				
Printed/Typed Name (b) (6) (SHAW) ON BEHALF OF GENERATOR		Signature (b) (6)		Month Day Year 9 16 04
17. Transporter 1 Acknowledgement of Receipt of Materials		Signature (b) (6)		Month Day Year 9 16 04
18. Transporter 2 Acknowledgement of Receipt of Materials		Signature		Month Day Year
19. Discrepancy Indication Space 1067 gal. peroxide 1433 gal. water				
20. Facility Owner or Operator: Certification of receipt of waste materials covered by this manifest except as noted in Item 19. PSC WWTTP				
Printed/Typed Name (b) (6)		Signature (b) (6)		Month Day Year 09 16 04

PipeLine

NON-HAZARDOUS WASTE MANIFEST		1. Generator's US EPA ID No. H.I.R.000.048.892100.105	Manifest Doc. No. 00.105	2. Page 1 of
3. Generator's Name and Mailing Address NOTAMSPAC (Attn: (b) (6)) Code N4(ENT) 500 Center St. Wahiawa Hi. 96786-3050			51537 W1369	
4. Generator's Phone (808) 653-9858				
5. Transporter 1 Company Name Hawaii Marine Cleaning LLC		6. US EPA ID Number H.I.R.000.01355.82		A. Transporter's Phone (808) 455-8226
7. Transporter 2 Company Name		8. US EPA ID Number		B. Transporter's Phone
9. Designated Facility Name and Site Address Philip Services LTD 91-127 Malakole St. Kapolei, Hi. 96707		10. US EPA ID Number H.I.R.000.00092.1		C. Facility's Phone (808) 682-3033
11. Waste Shipping Name and Description a. Not regulated by DOT Oily water			12. Containers No. Type	13. Total Quantity
			001 T.T	45.000 G
b.				
c.				
d.				
D. Additional Descriptions for Materials Listed Above 19% Diesel 99% Water			E. Handling Codes for Wastes Listed Above	
15. Special Handling Instructions and Additional Information 24 hrs. spill response (Penco) 808 545-5195				
16. GENERATOR'S CERTIFICATION: I certify the materials described above on this manifest are not subject to federal regulations for reporting proper disposal of Hazardous Waste.				
Printed/Typed Name (b) (6) FOR GENERATOR		Signature (b) (6)		Month Day Year 09 27 04
17. Transporter 1 Acknowledgement of Receipt of Materials (b) (6)		Signature (b) (6)		Month Day Year 09 27 04
18. Transporter 2 Acknowledgement of Receipt of Materials Printed/Typed Name		Signature		Month Day Year
19. Discrepancy Indication Space				
20. Facility Owner or Operator: Certification of receipt of waste materials covered by this manifest except as noted in Item 19. PSC1222TP				
Printed/Typed Name (b) (6)		Signature (b) (6)		Month Day Year 09 27 04

Pipeline

NON-HAZARDOUS WASTE MANIFEST		1. Generator's US EPA ID No. H.1.R.0.0.0.4.8.8.9.2	Manifest Doc. No. 00.1.0.6	2. Page 1 of		
3. Generator's Name and Mailing Address NCTAMSPAC (Attn: (b) (6) code N465NT) 500 center st. Wahiawa Hi. 96786-3050						
4. Generator's Phone (808) 653-9858						
5. Transporter 1 Company Name Hawaii Marine Cleaning		6. US EPA ID Number H.1.R.0.0.0.1.3.5.5.8.2	A. Transporter's Phone (808) 455-8220			
7. Transporter 2 Company Name		8. US EPA ID Number	B. Transporter's Phone			
9. Designated Facility Name and Site Address Phip Servis LTD 41-111 MALAKOLE ST. KAPOLEI, HI 96707		10. US EPA ID Number H.1.R.0.0.0.0.0.9.2.7	C. Facility's Phone (808) 682-3033			
11. Waste Shipping Name and Description a. NOT regulated by DOT Oily WATER b. c. d.			12. Containers No.	Type	13. Total Quantity	14. Unit Wt/Vol
			001	TT	45.0.0	G
D. Additional Descriptions for Materials Listed Above 1% Diesel 99% WATER			E. Handling Codes for Wastes Listed Above			
15. Special Handling Instructions and Additional Information 24hrs. spill response (PENCO) 808 545-5195						
16. GENERATOR'S CERTIFICATION: I certify the materials described above on this manifest are not subject to federal regulations for reporting proper disposal of Hazardous Waste. Printed/Typed Name (b) (6) (SARW) Signature (b) (6) Month Day Year 09/24/04 ON BEHALF OF GENERATOR						
17. Transporter 1 Acknowledgement of Receipt of Materials (b) (6) (b) (6) Month Day Year 09/24/04						
18. Transporter 2 Acknowledgement of Receipt of Materials Printed/Typed Name Signature Month Day Year						
19. Discrepancy Indication Space						
20. Facility Owner or Operator: Certification of receipt of waste materials covered by this manifest except as noted in Item 19. TSC NAME Printed/Typed Name (b) (6) Signature (b) (6) Month Day Year 09/24/04						

Pipeline

NON-HAZARDOUS WASTE MANIFEST		1. Generator's US EPA ID No. H.1.R.000.0.4.8.89.200.1.0.7	Manifest Doc. No.	2. Page 1 of	
3. Generator's Name and Mailing Address NCTAMS PAC (ATTN (b) (6), code N465NT) 500 CENTER ST WAHIAWA HI 96786-3050					
4. Generator's Phone (808) 653 9858					
5. Transporter 1 Company Name HAWAII MARINE CLEANING		6. US EPA ID Number H.1.R.0.0.0.3.5.5.8.2.		A. Transporter's Phone (808) 455 8226	
7. Transporter 2 Company Name		8. US EPA ID Number		B. Transporter's Phone	
9. Designated Facility Name and Site Address PHILIP SERVICE LTD 91127 MALAKOLE ST. KAPOLEI, HI 96707		10. US EPA ID Number H.1.R.0.0.0.0.0.0.9.2.7		C. Facility's Phone (808) 682-3033	
11. Waste Shipping Name and Description		12. Containers No.	Type	13. Total Quantity	14. Unit Wt/Vol
a. NOT REGULATED BY DOT OILY WATER		001	T.T	4500 5000	G
b.					
c.					
d.					
D. Additional Descriptions for Materials Listed Above 10% Diesel 99% WATER		E. Handling Codes for Wastes Listed Above			
15. Special Handling Instructions and Additional Information 24hrs spill response (Penco) 808 545-5195					
16. GENERATOR'S CERTIFICATION: I certify the materials described above on this manifest are not subject to federal regulations for reporting proper disposal of Hazardous Waste.					
Printed/Typed Name (b) (6) (SHAW)		(b) (6)		Month Day Year 09 24 04	
ON BEHALF OF GENERATOR		(b) (6)			
17. Transporter 1 Acknowledgement of Receipt of Materials		(b) (6)		Month Day Year 09 24 04	
(b) (6)		(b) (6)			
Printed/Typed Name		Signature		Month Day Year	
19. Discrepancy Indication Space					
20. Facility Owner or Operator: Certification of receipt of waste materials covered by this manifest except as noted in Item 19.					
Printed/Typed Name (b) (6)		Signature (b) (6)		Month Day Year 09 24 04	

Pipeline

NON-HAZARDOUS WASTE MANIFEST		1. Generator's US EPA ID No. H.I.R.O.O.O.O.4.889.20.01.0.B	Manifest Doc. No.	2. Page 1 of
3. Generator's Name and Mailing Address NCTAMS PAC (ATTN: (b) (6)) 500 CENTER ST WAHIANA, HI 96786-3050				
4. Generator's Phone (808) 6539858				
5. Transporter 1 Company Name HAWAII MARINE CLEANING		6. US EPA ID Number H.I.R.O.O.O.3.558.2	A. Transporter's Phone (808) 455 8226	
7. Transporter 2 Company Name		8. US EPA ID Number	B. Transporter's Phone	
9. Designated Facility Name and Site Address Philip Services LTD. 9127 MAKA KOLE ST. KAPOLEI, HI 96707		10. US EPA ID Number H.I.R.O.O.O.O.O.9.2.7	C. Facility's Phone (808) 682-3033	
11. Waste Shipping Name and Description		12. Containers No. Type	13. Total Quantity	14. Unit Wt/Vol
a. NOT REGULATED BY DOT OILY WATER		001 TT	4600	G
b.				
c.				
d.				
10% Diesel 99% WATER				
D. Additional Descriptions for Materials Listed Above Hydro clor Q < 1000 ppm 10% Diesel 99% WATER		E. Handling Codes for Wastes Listed Above		
15. Special Handling Instructions and Additional Information 24 hrs. spill response (PENCO) 808 545-5195				
16. GENERATOR'S CERTIFICATION: I certify the materials described above on this manifest are not subject to federal regulations for reporting proper disposal of Hazardous Waste.				
Printed/Typed Name (b) (6) (SIGN)		Signature (b) (6)		Month Day Year 09/23/04
17. Transporter 1 Acknowledgement of Receipt of Materials				
(b) (6)		(b) (6)		Month Day Year 09/23/04
18. Transporter 2 Acknowledgement of Receipt of Materials				
Printed/Typed Name		Signature		Month Day Year
19. Discrepancy Indication Space				
20. Facility Owner or Operator: Certification of receipt of waste materials covered by this manifest except as noted in Item 19.				
PSC WATP		(b) (6)		Month Day Year 09/23/04

PIPE LINE

NON-HAZARDOUS WASTE MANIFEST		1. Generator's US EPA ID No. HI.00000488.92	Manifest Doc. No. 00109	2. Page 1 of	
3. Generator's Name and Mailing Address NCTAMS PAC KAHN (b) (6), CODE N465NT) 500 CENTER ST. WAIHAWA HI 96786-3050			51537 001369		
4. Generator's Phone (808) 653-9855		5. Transporter 1 Company Name HAWAII MARINE CLEANING LLC		6. US EPA ID Number HI.R000135.582	
7. Transporter 2 Company Name		8. US EPA ID Number		A. Transporter's Phone (808) 455-8226	
9. Designated Facility Name and Site Address PHILIP SERVICES LTD 91-127 MALAKOLE ST KAPULEI HI 96707		10. US EPA ID Number HI.R0.00000927		B. Transporter's Phone	
11. Waste Shipping Name and Description			C. Facility's Phone (808) 682-3033		
a. NOT REGULATED BY DOT Oily water			12. Containers No.	Type	13. Total Quantity
b.			001	TT	4500
c.					
d.					
D. Additional Descriptions for Materials Listed Above 10% DIESEL 99% WATER			E. Handling Codes for Wastes Listed Above		
15. Special Handling Instructions and Additional Information 24 hrs SPILL RESPONSE (PENCLU) If CLOS 1000 808 545-5195					
16. GENERATOR'S CERTIFICATION Described above on this manifest are not subject to federal regulations for reporting proper disposal of Hazardous Waste.					
Printed/Typed Name (b) (6) (SHAW) FOR GENERATOR		Signature (b) (6)		Month Day Year 09 27 04	
17. Transporter 1 Acknowledgement of Receipt of Materials (b) (6)		Signature (b) (6)		Month Day Year 09 27 04	
18. Transporter 2 Acknowledgement of Receipt of Materials (b) (6)		Signature (b) (6)		Month Day Year 09 27 04	
19.					
20. Facility Owner or Operator: Certification of receipt of waste materials covered by this manifest except as noted in Item 19. PSCWWT P					
Printed/Typed Name (b) (6)		Signature (b) (6)		Month Day Year 09 27 04	

NON-HAZARDOUS WASTE MANIFEST		1. Generator's US EPA ID No. HI00048892	Manifest Doc. No. .001.10	2. Page 1 of
3. Generator's Name and Mailing Address NCTAMSPAC(ATTN: (b) (6), Code N465NT) 500 Center ST. Wahiawa HI. 96786-3050			51538 U1367	
4. Generator's Phone (808) 653-9858				
5. Transporter 1 Company Name Hawaii Marine Cleaning LLC		6. US EPA ID Number HIR000135582	A. Transporter's Phone *808 4558226	
7. Transporter 2 Company Name		8. US EPA ID Number	B. Transporter's Phone	
9. Designated Facility Name and Site Address Philip Services, LTD 91-127 Malakole St. Kapolei, HI. 96707		10. US EPA ID Number HIR000000927	C. Facility's Phone 682-3033	
11. Waste Shipping Name and Description			12. Containers No. Type	13. Total Quantity
a. NOT REGULATED BY DOT OILY WATER			001 tt	4500 G
b.				
c.				
d.				
D. Additional Descriptions for Materials Listed Above 99% Water, 1% Diesel			E. Handling Codes for Wastes Listed Above	
15. Special Handling Instructions and Additional Information 24hr spill response (PENCO) 545-5195				
16. GENERATOR'S CERTIFICATION: I certify the materials described above on this manifest are not subject to federal regulations for reporting proper disposal of Hazardous Waste.				
Printed/Typed Name (b) (6) SHAW		Signature (b) (6)		Month Day Year 10 9 28 04
17. Transporter 1 Acknowledgement of Receipt of Materials (b) (6)		Signature (b) (6)		Month Day Year 10 9 28 04
18. Transporter 2 Acknowledgement of Receipt of Materials Printed/Typed Name		Signature		Month Day Year
19. Discrepancy Indication Space				
20. Facility Owner or Operator: Certification of receipt of waste materials covered by this manifest except as noted in Item 19. PSCWWTP				
Printed (b) (6)		Signature (b) (6)		Month Day Year 10 9 28 04

PIPELINE

NON-HAZARDOUS WASTE MANIFEST		1. Generator's US EPA ID No. HI000048892	Manifest Doc. No. 00111	2. Page 1 of
3. Generator's Name and Mailing Address NCTAMSPAC (ATTN: (b) (6)), Code N465NT) 500 Center St. Wahiawa HI., 96786-3050			51545/ W1367	
4. Generator's Phone (808) 653- 9858				
5. Transporter 1 Company Name Hawaii Marine Cleaning LLC		6. US EPA ID Number HIR000135582	A. Transporter's Phone 455-8226	
7. Transporter 2 Company Name		8. US EPA ID Number	B. Transporter's Phone	
9. Designated Facility Name and Site Address Philip Services, LTD 91-127 Malakole St. Kapolei, Hi. 96707		10. US EPA ID Number HIR000000927	C. Facility's Phone 682-3033	
11. Waste Shipping Name and Description			12. Containers No. Type	13. Total Quantity
a. Not Regulated by DOT Oily Water			001 TT	4500 G
b.				
c.				
d.				
D. Additional Descriptions for Materials Listed Above Hydrochloric 1000 ppm 99% Water 1% Diesel			E. Handling Codes for Wastes Listed Above	
15. Special Handling Instructions and Additional Information 24hr spill response (PENCO) 545-5195				
16. GENERATOR'S CERTIFICATION Printed/Typed Name (b) (6) Signature (b) (6) Month 09 Day 28 Year 04				
17. Transporter 1 Acknowledgement of Receipt of Materials (b) (6) Signature (b) (6) Month 09 Day 28 Year 04				
18. Transporter 2 Acknowledgement of Receipt of Materials Printed/Typed Name Signature Month Day Year				
19. Discrepancy Indication Space				
20. Facility Name and Address (b) (6) SCWTP Printed/Typed Name Signature (b) (6) Month 09 Day 28 Year 04				

PIPELINE

NON-HAZARDOUS WASTE MANIFEST		1. Generator's US EPA ID No. HIR000048892	Manifest Doc. No. 00112	2. Page 1 of	
3. Generator's Name and Mailing Address NCTAMSPAC (ATTN: (b) (6)), Code N465NT) 500 Center St. Wahiawa HI. 96796-3050			51545 / 401367		
4. Generator's Phone (808)653-9858		6. US EPA ID Number HIR000135582		A. Transporter's Phone 455-8226	
5. Transporter 1 Company Name Hawaii Marine Cleaning LLC		7. Transporter 2 Company Name		B. Transporter's Phone	
8. US EPA ID Number		9. Designated Facility Name and Site Address Philip Services, LTD 91-Malakole St. Kapolei HI. 96707		10. US EPA ID Number HIR000000927	
11. Waste Shipping Name and Description		12. Containers		13. Total Quantity	
a. NOT Regulated by DOT Oily Water		No. Type		14. Unit Wt/Vol	
b.		001 T E		4.500 G	
c.					
d.					
D. Additional Descriptions for Materials Listed Above 99% Water, 1% diesel			E. Handling Codes for Wastes Listed Above		
15. Special Handling Instructions and Additional Information 24hr spill response (PENCO) 545-5195					
16. GENERATOR'S CERTIFICATION: I certify the materials described above on this manifest are not subject to federal regulations for reporting proper disposal of Hazardous Waste.					
Printed/Typed Name (b) (6) (SHAW) FOR GENERATOR		Signature (b) (6)		Month Day Year 10 9 27 04	
17. Transporter 1 Acknowledgement of Receipt of Materials		(b) (6)		Month Day Year 10 9 27 04	
18. Transporter 2 Acknowledgement of Receipt of Materials		(b) (6)		Month Day Year 10 9 27 04	
Printed/Typed Name		Signature		Month Day Year	
19. Discrepancy Indication Space					
20. Facility Owner or Operator: Certification of receipt of waste materials covered by this manifest except as noted in Item 19.					
Printed/Typed Name (b) (6) PSCWARP		Signature (b) (6)		Month Day Year 09 27 04	

Please print or type
(Form designed for use on elite (12-pitch) typewriter.)

Pipeline

NON-HAZARDOUS WASTE MANIFEST		1. Generator's US EPA ID No. HIR000048892	Manifest Doc. No. 00113	2. Page 1 of		
3. Generator's Name and Mailing Address NCTAMSPAC(ATTN:(b) (6)) Code N465NT) 500 Center St. Wahawa HI. 96786-3050			51548141367			
4. Generator's Phone (808) 653-9858						
5. Transporter 1 Company Name Hawaii Marine Cleaning LLC		6. US EPA ID Number HIR000135582		A. Transporter's Phone 455-8226		
7. Transporter 2 Company Name		8. US EPA ID Number		B. Transporter's Phone		
9. Designated Facility Name and Site Address Philip Services, LTD 91-127 Malakole St. Kapolei, HI 96707		10. US EPA ID Number HIR000000927		C. Facility's Phone 682-3033		
11. Waste Shipping Name and Description			12. Containers No.	Type	13. Total Quantity	14. Unit Wt/Vol
a. Not regulated by DOT Oily Water			001	TT	4500	G
b.						
c.						
d.						
D. Additional Descriptions for Materials Listed Above 99% Water, 1% Diesel			E. Handling Codes for Wastes Listed Above H, clor 200ppm			
15. Special Handling Instructions and Additional Information						
16. GENERATOR'S CERTIFICATION: The materials described above on this manifest are not subject to federal regulations for reporting proper disposal of Hazardous Waste.						
Printed/Typed Name FOR GENERATOR		(b) (6) (SHAW)		Signature (b) (6)		Month Day Year 09 30 04
17. Transporter 1 Acknowledgement of Receipt of Materials		(b) (6)		Signature (b) (6)		Month Day Year 09 30 04
18. Transporter 2 Acknowledgement of Receipt of Materials				Signature		Month Day Year
19. Discrepancy Indication Space						
20. Facility Owner or Operator: Certification of receipt of waste materials covered by this manifest except as noted in Item 19.						
Printed/Typed Name (b) (6)		Signature (b) (6)		Month Day Year 09 30 04		

PIPELINE

NON-HAZARDOUS WASTE MANIFEST		1. Generator's US EPA ID No. HIR000048892	Manifest Doc. No. 00114	2. Page 1 of	
3. Generator's Name and Mailing Address NCTAMSPAC(ATTN:(b) (6) Code N465NT) 500 Center st. Wahiawa HI. 96786-3050					
4. Generator's Phone (808)653-9858					
5. Transporter 1 Company Name Hawaii Marine Cleaning LLC		6. US EPA ID Number HIR000135582	A. Transporter's Phone 455-8226		
7. Transporter 2 Company Name		8. US EPA ID Number	B. Transporter's Phone		
9. Designated Facility Name and Site Address Philip Services, LTD 91-127 Malokole St. Kapolei, HI. 96707		10. US EPA ID Number HIR000000927	C. Facility's Phone 682-3033		
11. Waste Shipping Name and Description			12. Containers No. Type	13. Total Quantity	14. Unit Wt/Vol
a. Not regulated by DOT Oily Water			001	TT	4500 G
b.					
c.					
d.					
D. Additional Descriptions for Materials Listed Above 99% Water, 1% Diesel			E. Handling Codes for Wastes Listed Above		
15. Special Handling Instructions and Additional Information 24hr spill response (PENCO)545-5195					
16. GENERATOR'S CERTIFICATION: I certify the materials described above on this manifest are not subject to federal regulations for reporting proper disposal of Hazardous Waste.					
Printed/Typed Name (b) (6) (SHAW) FOR GENERATOR		Signature (b) (6)		Month Day Year 09 30 04	
17. Transporter 1 Acknowledgement of Receipt of Materials		Signature (b) (6)		Month Day Year 09 30 04	
Printed/Typed Name		Signature		Month Day Year	
19. Discrepancy Indication Space					
20. Facility Owner or Operator: Certification of receipt of waste materials covered by this manifest except as noted in Item 19.					
Printed/Typed Name (b) (6)		Signature (b) (6)		Month Day Year 09 30 04	

PIPELINE

NON-HAZARDOUS WASTE MANIFEST		1. Generator's US EPA ID No. HIR000048892	Manifest Doc. No. 00115	2. Page 1 of	
3. Generator's Name and Mailing Address NCTAMSPAC(ATTN: (b) (6), Code N465NT) 500 Center St. Wahiawa HI. 96786-3050				21367 52112	
4. Generator's Phone (808) 653-9858		6. US EPA ID Number HIR000135582		A. Transporter's Phone 455-8226	
5. Transporter 1 Company Name Hawaii Marine Cleaning LLC		7. Transporter 2 Company Name		B. Transporter's Phone	
9. Designated Facility Name and Site Address Phile Services, LTD 91-127 Malokole St. Kapolei, HI.96707		10. US EPA ID Number HLR000000927		C. Facility's Phone 682-3303	
11. Waste Shipping Name and Description				12. Containers No. Type	13. Total Quantity
a. Not regulated by DOT Oily Water				001	TT 4500
b.					G
c.					
d.					
D. Additional Descriptions for Materials Listed Above 99% water, 1% diesel				E. Handling Codes for Wastes Listed Above	
15. Special Handling Instructions and Additional Information 24hr spill response (PENCO) 545-5195					
16. GENERATOR'S CERTIFICATION Is described above on this manifest are not subject to federal regulations for reporting proper disposal of Hazardous Waste. Printed/Typed Name (b) (6) (SHAW) Signature (b) (6) Month Day Year 10 22 04 ON BEHALF OF GENERATOR					
17. Transporter 1 Acknowledgement of Receipt of Materials (b) (6) Signature (b) (6) Month Day Year 10 22 04					
18. Transporter 2 Acknowledgement of Receipt of Materials Printed/Typed Name Signature Month Day Year					
19. Discrepancy Indication Space					
20. Facility Owner or Operator: Certification of receipt of waste materials covered by this manifest except as noted in Item 19. ISC WHEY P Printed/Typed Name (b) (6) Signature (b) (6) Month Day Year 10 22 04					

PIPELINE

NON-HAZARDOUS WASTE MANIFEST		1. Generator's US EPA ID No. HIR000048892	Manifest Doc. No. 00116	2. Page 1 of
3. Generator's Name and Mailing Address NCTAMSPAC (ATTN: (b) (6)) Code N465NT) 500 Center St. Wahiawa HI. 96786-3050			W1367A 52112	
4. Generator's Phone (808) 653-9858				
5. Transporter 1 Company Name Hawaii Marine Cleaning		6. US EPA ID Number HIR000135582		A. Transporter's Phone 455-8226
7. Transporter 2 Company Name		8. US EPA ID Number		B. Transporter's Phone
9. Designated Facility Name and Site Address Philip Services LTD 91-127 Malokole St. Kapolei, HI 06707		10. US EPA ID Number HIR000000927		C. Facility's Phone 682-3033
11. Waste Shipping Name and Description			12. Containers No. Type	13. Total Quantity
a. NOT regulated by DOT Oily Water			001	TT 45.00 G
b.				
c.				
d.				
D. Additional Descriptions for Materials Listed Above 99% water, 1% diesel			E. Handling Codes for Wastes Listed Above	
15. Special Handling Instructions and Additional Information 24hr spill resopnse (PENCO) 545-5195				
16. GENERATOR'S CERTIFICATION Printed/Typed Name (b) (6) Signature (b) (6) Month Day Year 10 22 04				
17. Transporter 1 Acknowledgement of Receipt of Materials (b) (6) (b) (6) Month Day Year 10 22 04				
19. Discrepancy Indication Space				
20. Facility Owner or Operator: Certification of receipt of waste materials covered by this manifest except as noted in Item 19. PSCWWTP Printed/Typed Name (b) (6) Signature (b) (6) Month Day Year 10 22 04				

PIPELINE

NON-HAZARDOUS WASTE MANIFEST		1. Generator's US EPA ID No. HIR000048892	Manifest Doc. No. 00117.	2. Page 1 of	
3. Generator's Name and Mailing Address NCTAMSPAC (Attn: (b) (6), Code N465NT) 500 Center St. Wahiawa HI. 96786-3050					
4. Generator's Phone (808) 653-9858					
5. Transporter 1 Company Name Hawaii Marine Cleaning LLC		6. US EPA ID Number HIR000135582		A. Transporter's Phone 455-8226	
7. Transporter 2 Company Name		8. US EPA ID Number		B. Transporter's Phone	
9. Designated Facility Name and Site Address Philip Services, LTD 91-127 Malokole St. Kapolei, Hi 96707		10. US EPA ID Number HIR000000927		C. Facility's Phone	
11. Waste Shipping Name and Description				12. Containers No. Type	13. Total Quantity
a. Not regulated by DOT Oily Water				001 TT	3000 G
b.				.	.
c.				.	.
d.				.	.
D. Additional Descriptions for Materials Listed Above 99% water, 1% diesel				E. Handling Codes for Wastes Listed Above	
15. Special Handling Instructions and Additional Information 24hr spill response (PENCO) 545-5195					
16. GENERATOR'S CERTIFICATION Described above on this manifest are not subject to federal regulations for reporting proper disposal of Hazardous Waste. Printed/Typed Name (b) (6) (SHA) Signature (b) (6) Month Day Year 10 25 04 ON BEHALF OF GENERATOR					
17. Transporter 1 Acknowledgement of Receipt of Materials (b) (6) Signature (b) (6) Month Day Year 10 25 04					
18. Transporter 2 Acknowledgement of Receipt of Materials Printed/Typed Name Signature Month Day Year					
19. Discrepancy Indication Space					
20. Facility Owner or Operator: Certification of receipt of waste materials covered by this manifest except as noted in Item 19. P.S.C. WWTP Printed/Typed Name (b) (6) Signature (b) (6) Month Day Year 10 27 04					