



DEPARTMENT OF THE NAVY
JOINT BASE PEARL HARBOR-HICKAM
850 TICONDEROGA ST STE 100
PEARL HARBOR HI 96860-5102

5090
Ser JB4/1045
28 Sep 2020

From: Commander, Joint Base Pearl Harbor-Hickam
To: Staff and Patrons of Joint Base Pearl Harbor-Hickam Ford Island Child Development Center (Building 570)
Subj: SAMPLING AND TESTING FOR LEAD IN DRINKING WATER AT FORD ISLAND CHILD DEVELOPMENT CENTER

Ref: (a) OPNAVINST 5090.1E, Environmental Readiness Program

Encl: (1) Overview of Testing Results and Corrective Actions for Ford Island CDC (Building 570)

1. I am pleased to report that all water intended for consumption at this Child Development Center (CDC) has tested below the Environmental Protection Agency's (EPA's) lead screening level of 15 parts per billion (ppb). Initial results identified that seven outlets at Ford Island CDC did not meet EPA's lead screening level. Shortly after receiving the initial results, we took those outlets out of service and performed corrective actions. Follow-up sampling identified that the seven outlets at Ford Island CDC are now compliant with EPA's lead screening level and no further action is required. Enclosure 1 of this letter provides a summary of all sampling results for the entire facility.
2. These tests are conducted every 5 years, and samples are taken from all sources water used for drinking, cooking, or washing at all Youth Centers (YCs) and CDCs. Our latest tests were conducted in July 2020.
3. Per reference (a), we have adopted the EPA's recommendation that we test the lead content of drinking water in priority areas such as YCs and CDCs as policy and made this a top priority. Our environmental personnel conducted this testing following Navy and EPA guidelines, and samples were sent to a state-certified or accredited laboratory for analysis.
4. My team and I will continue to monitor and test water quality at all of our YCs and CDCs to ensure our water is safe to drink and use. I remain committed to the safety and health of all personnel and family members using our facilities and will keep you updated as necessary.
5. If you have questions regarding the sampling program, please contact our Installation Environmental Program Director at (808) 474-0392 or steven.christiansen@navy.mil.

R. E. HARMEYER
CAPT, CEC, U.S. Navy
By direction

Copy:
CNIC N45
CNRH N45
NAVFAC HI EV, EV1, PRJ4

Overview of Testing Results and Corrective Actions for Ford Island CDC (Building 570)

At the Ford Island CDC, outlets used for drinking, cooking, and washing were tested. Out of 142 samples collected, seven water outlets initially tested above the screening level of 15 parts per billion (ppb) for lead in drinking water in schools and childcare centers.

The first sampling event took place on November 9, 2019. We received the test results on November 22, 2019 which included seven exceedances. We took those outlets out of service shortly after and conducted follow up sampling on November 27, 2019, April 6, 2020, and July 29, 2020 to verify the results.

Summary table of the results from the first and follow-up samples for the seven outlets:

Outlet Map#	Outlet Description	First Sample (ppb)	Follow-up Sample (ppb)			Comments and Corrective Actions
			First Draw	Flush	Additional Confirmation	
124	Toddler Sink (Rm. 120)	74	32	6.3	6.5	Most likely source of lead was the fixture. Fixture was replaced on 02/24/20 and retested on 04/06/20. The result was below the screening level.
127	Toddler Sink (Rm. 122)	41	17	2.7	4.8	Most likely source of lead was the fixture. Fixture was replaced on 02/24/20 and retested on 04/06/20. The result was below the screening level.
130	Toddler Sink (Rm. 124)	22	400	36	13	Most likely source of lead was debris in aerator. Aerator was replaced on 02/24/20 and retested on 04/06/20. The result was below the screening level.
120	Toddler Sink (Rm. 134)	19	28	1.7	2.7	Most likely source of lead was debris in aerator. Aerator was replaced on 02/24/20 and retested on 04/06/20. Retesting result (16 ppb) was above the screening limit. Outlet was taken out of service. Filter was installed 07/23/20 and retested on 07/29/20. The result was below the screening level.
116	Adult Sink (Rm. 138)	26	1.5	Not Detected	Not Required	Most likely source of lead was from infrequent use of the sink. Water should be run for 30 sec in the morning.
113	Toddler Sink (Rm. 142)	35	270	40	2.5	Most likely source of lead was debris in aerator. Aerator was replaced on 02/24/20 and retested on 04/06/20. Retesting result (26 ppb) was above the screening limit. Outlet was taken out of service. Filter was installed on 07/23/20 and retested on 07/29/20. The result was below the screening level.
110	Adult Sink (Rm. 146)	20	1.9	Not Detected	Not Required	Most likely source of lead was from infrequent use of the sink. Water should be run for 30 sec in the morning.

A complete summary results table (enclosure 2) is enclosed for your information. The *Building #* and *Room #* indicate the location of the fixture. The *Outlet Map #* corresponds to the location indicated on the floor plan of the CDC (enclosure 3). The *Category* column gives information about whether the outlet is used for drinking water (water fountain), cooking (food preparation), or washing (primarily hand-washing or brushing teeth). The *Outlet Description* column contains additional information to describe the outlet.

The next set of columns provide *Initial Lead Results*, and for those locations that exceeded the recommended screening level of 15 ppb the *Follow-up Lead Results*.

EPA sampling protocol requires water to not be used for between 8 and 18 hours prior to first draw sampling. Therefore, *Initial Lead Results* were from first draw samples collected early in the morning before the CDC opened and before any water was used. The *Initial Lead Results* also indicate whether resampling is required.

The *Follow-up Lead Results* includes columns for *First Draw* and *Flush* samples, which help determine the source of lead:

- If the lead concentration of 30 second flush sample resulted in lower than 15 ppb lead, the aerators were the source of lead and the outlet can be used for drinking if the aerators are cleaned on a regular basis.
- If the lead concentration of the resampled first draw (but not the follow up 30 second flush) was greater than 15 ppb, the fixture was the source of lead. These fixtures can be used if water is flushed for 30 seconds before first use of the day or if the fixtures are replaced and retesting confirms that the new fixtures do not leach lead.
- If the lead concentration of the sample following the 30 second flush was greater than 15 ppb and greater than the lead concentration of the first draw resample, the source of lead is the plumbing upstream of the outlet. These outlets should be disconnected unless upstream plumbing is replaced.

The *Comments* column indicates additional information regarding the fixture and actions to remediate the source of lead if detected.

LIPA Test Results
Ford Island CDC (Building # 570)

Initial Sample Date: 11/28/19, Results Date: 12/16/19
Follow-up Sample Date: 11/27/19, Results Date: 12/07/19

Building #	Room #	Outlet Map #	Category	Outlet Description	Initial Lead Results (ppb)	Follow-up Lead Results (ppb)			Comments
						First Draw	Flush	Confirmation	
570	111	17	Washing	Adult Sink	Not Detected	Not Sampled	Not Sampled	Not Required	
570	111	18	Washing	Toddler Combination Sink - Faucet	Not Detected	Not Sampled	Not Sampled	Not Required	Used for teeth brushing
570	111	19	Drinking	Toddler Combination Sink - Water Fountain	0.77	Not Sampled	Not Sampled	Not Required	
570	111	20	Washing	Toddler Combination Sink - Faucet	Not Detected	Not Sampled	Not Sampled	Not Required	Used for teeth brushing
570	111	21	Drinking	Toddler Combination Sink - Water Fountain	0.73	Not Sampled	Not Sampled	Not Required	
570	111	22	Washing	Adult Sink - Sensor	0.53	Not Sampled	Not Sampled	Not Required	
570	111	23	Washing	Toddler Sink - Sensor	4.2	Not Sampled	Not Sampled	Not Required	
570	111	24	Washing	Toddler Sink - Sensor	Not Detected	Not Sampled	Not Sampled	Not Required	
570	113	9	Washing	Adult Sink	Not Detected	Not Sampled	Not Sampled	Not Required	
570	113	10	Washing	Toddler Combination Sink - Faucet	Not Detected	Not Sampled	Not Sampled	Not Required	Used for teeth brushing
570	113	11	Drinking	Toddler Combination Sink - Water Fountain	0.77	Not Sampled	Not Sampled	Not Required	
570	113	12	Washing	Toddler Combination Sink - Faucet	0.61	Not Sampled	Not Sampled	Not Required	Used for teeth brushing
570	113	13	Drinking	Toddler Combination Sink - Water Fountain	1.3	Not Sampled	Not Sampled	Not Required	
570	113	14	Washing	Adult Sink - Sensor	1.1	Not Sampled	Not Sampled	Not Required	
570	113	15	Washing	Toddler Sink	0.89	Not Sampled	Not Sampled	Not Required	
570	113	16	Washing	Toddler Sink	0.73	Not Sampled	Not Sampled	Not Required	
570	115	1	Washing	Adult Sink	Not Detected	Not Sampled	Not Sampled	Not Required	
570	115	2	Washing	Toddler Combination Sink - Faucet	0.66	Not Sampled	Not Sampled	Not Required	Used for teeth brushing
570	115	3	Drinking	Toddler Combination Sink - Water Fountain	Not Detected	Not Sampled	Not Sampled	Not Required	
570	115	4	Washing	Toddler Combination Sink - Faucet	1.4	Not Sampled	Not Sampled	Not Required	Used for teeth brushing
570	115	5	Drinking	Toddler Combination Sink - Water Fountain	0.68	Not Sampled	Not Sampled	Not Required	
570	115	6	Washing	Toddler Sink - Sensor	4	Not Sampled	Not Sampled	Not Required	
570	115	7	Washing	Toddler Sink - Sensor	9.2	Not Sampled	Not Sampled	Not Required	
570	115	8	Washing	Adult Sink - Sensor	Not Sampled	Not Sampled	Not Sampled	Not Required	Sensor Broken
570	120	122	Washing	Adult Sink	1.4	Not Sampled	Not Sampled	Not Required	Room closed; will reopen in 1 year
570	120	123	Washing	Adult Sink - Sensor	5.6	Not Sampled	Not Sampled	Not Required	
570	120	124	Washing	Toddler Sink - Sensor	74	32	6.3	6.5	Most likely source of lead was the fixture. Fixture was replaced on 02/24/20 and retested on 04/06/20. The result was below the screening level
570	122	125	Washing	Adult Sink	6.7	Not Sampled	Not Sampled	Not Required	
570	122	126	Washing	Adult Sink - Sensor	6.6	Not Sampled	Not Sampled	Not Required	

Building #	Room #	Outlet Map #	Category	Outlet Description	Initial Lead Results (ppb)	Follow-up Lead Results (ppb)			Comments
						First Draw	Flush	Confirmation	
570	122	127	Washing	Toddler Sink - Sensor	41	17	2.7	4.8	Most likely source of lead was the fixture. Fixture was replaced on 02/24/20 and retested on 04/06/20. The result was below the screening level
570	124	128	Washing	Adult Sink	Not Detected	Not Sampled	Not Sampled	Not Required	
570	124	129	Washing	Adult Sink - Sensor	0.88	Not Sampled	Not Sampled	Not Required	
570	124	130	Washing	Toddler Sink - Sensor	22	400	36	13	Most likely source of lead was the fixture. Fixture was replaced on 02/24/20 and retested on 04/06/20. The result was below the screening level
570	126	131	Washing	Adult Sink	Not Detected	Not Sampled	Not Sampled	Not Required	
570	126	132	Washing	Adult Sink	5	Not Sampled	Not Sampled	Not Required	
570	126	133	Washing	Toddler Sink - Sensor	8	Not Sampled	Not Sampled	Not Required	
570	129	25	Washing	Adult Sink - Sensor	Not Detected	Not Sampled	Not Sampled	Not Required	
570	130	26	Washing	Adult Sink - Sensor	Not Detected	Not Sampled	Not Sampled	Not Required	
570	131	27	Washing	Adult Sink	Not Detected	Not Sampled	Not Sampled	Not Required	
570	132	121	Washing	Adult Sink - Sensor	Not Detected	Not Sampled	Not Sampled	Not Required	
570	134	118	Washing	Adult Sink	Not Detected	Not Sampled	Not Sampled	Not Required	
570	132	119	Washing	Adult Sink - Sensor	0.71	Not Sampled	Not Sampled	Not Required	
570	134	120	Washing	Toddler Sink - Sensor	19	28	1.7	16	Most likely source of lead was debris in aerator. Aerator was replaced on 02/24/20 and retested on 04/06/20. Retesting result (16 ppb) was above the screening limit. Outlet was taken out of service.
570	136	30	Washing	Adult Sink	Not Detected	Not Sampled	Not Sampled	Not Required	
570	136	31	Washing	Toddler Combination Sink - Faucet	Not Detected	Not Sampled	Not Sampled	Not Required	Used for teeth brushing
570	136	32	Drinking	Toddler Combination Sink - Water Fountain	Not Detected	Not Sampled	Not Sampled	Not Required	
570	136	33	Washing	Toddler Combination Sink - Faucet	3.3	Not Sampled	Not Sampled	Not Required	Used for teeth brushing
570	136	34	Drinking	Toddler Combination Sink - Water Fountain	0.75	Not Sampled	Not Sampled	Not Required	
570	136	35	Washing	Toddler Sink - Sensor	1.9	Not Sampled	Not Sampled	Not Required	
570	136	36	Washing	Toddler Sink - Sensor	1.4	Not Sampled	Not Sampled	Not Required	
570	136	132	Washing	Adult Sink - Sensor	1	Not Sampled	Not Sampled	Not Required	
570	138	115	Washing	Adult Sink	Not Detected	Not Sampled	Not Sampled	Not Required	
570	138	116	Washing	Adult Sink - Sensor	26	1.5	Not Detected	Not Required	Most likely source of lead was from infrequent use of the sink. Water should be run for 30 sec in the morning

(EPA Limit is 15 ppb)

Building #	Room #	Outlet Map #	Category	Outlet Description	Initial Lead Results (ppb)	Follow-up Lead Results (ppb)			Comments
						First Draw	Flush	Confirmation	
570	138	117	Washing	Toddler Sink - Sensor	1.1	Not Sampled	Not Sampled	Not Required	
570	140	37	Washing	Adult Sink	Not Detected	Not Sampled	Not Sampled	Not Required	
570	140	38	Washing	Toddler Combination Sink - Faucet	Not Detected	Not Sampled	Not Sampled	Not Required	Used for teeth brushing
570	140	39	Drinking	Toddler Combination Sink - Water Fountain	0.64	Not Sampled	Not Sampled	Not Required	
570	140	40	Washing	Toddler Combination Sink - Faucet	1	Not Sampled	Not Sampled	Not Required	Used for teeth brushing
570	140	41	Drinking	Toddler Combination Sink - Water Fountain	Not Detected	Not Sampled	Not Sampled	Not Required	
570	140	42	Washing	Toddler Sink - Sensor	2.5	Not Sampled	Not Sampled	Not Required	
570	140	43	Washing	Toddler Sink - Sensor	2.2	Not Sampled	Not Sampled	Not Required	
570	140	133	Washing	Adult Sink - Sensor	1.4	Not Sampled	Not Sampled	Not Required	
570	142	112	Washing	Adult Sink	0.5	Not Sampled	Not Sampled	Not Required	
570	142	113	Washing	Toddler Sink - Sensor	35	270	40	26	Most likely source of lead was debris in aerator. Aerator was replaced on 02/24/20 and retested on 04/06/20. Retesting result (26 ppb) was above the screening limit. Outlet was taken out of service.
570	142	114	Washing	Adult Sink - Sensor	0.72	Not Sampled	Not Sampled	Not Required	
570	144	44	Washing	Adult Sink	Not Detected	Not Sampled	Not Sampled	Not Required	
570	144	45	Washing	Toddler Combination Sink - Faucet	1.4	Not Sampled	Not Sampled	Not Required	Used for teeth brushing
570	144	46	Drinking	Toddler Combination Sink - Water Fountain	Not Detected	Not Sampled	Not Sampled	Not Required	
570	144	47	Washing	Toddler Combination Sink - Faucet	Not Detected	Not Sampled	Not Sampled	Not Required	Used for teeth brushing
570	144	48	Drinking	Toddler Combination Sink - Water Fountain	0.52	Not Sampled	Not Sampled	Not Required	
570	144	49	Washing	Toddler Sink - Sensor	3.5	Not Sampled	Not Sampled	Not Required	
570	144	50	Washing	Toddler Sink - Sensor	2.4	Not Sampled	Not Sampled	Not Required	
570	144	134	Washing	Adult Sink - Sensor	0.8	Not Sampled	Not Sampled	Not Required	
570	146	109	Washing	Adult Sink	1	Not Sampled	Not Sampled	Not Required	
570	146	110	Washing	Adult Sink - Sensor	20	1.9	Not Detected	Not Required	Most likely source of lead was from infrequent use of the sink. Water should be run for 30 sec in the morning
570	146	111	Washing	Toddler Sink - Sensor	1.7	Not Sampled	Not Sampled	Not Required	
570	148	51	Washing	Adult Sink	0.98	Not Sampled	Not Sampled	Not Required	
570	148	52	Washing	Toddler Combination Sink - Faucet	0.77	Not Sampled	Not Sampled	Not Required	Used for teeth brushing
570	148	53	Drinking	Toddler Combination Sink - Water Fountain	0.67	Not Sampled	Not Sampled	Not Required	
570	148	54	Washing	Toddler Combination Sink - Faucet	Not Detected	Not Sampled	Not Sampled	Not Required	Used for teeth brushing
570	148	55	Drinking	Toddler Combination Sink - Water Fountain	Not Detected	Not Sampled	Not Sampled	Not Required	
570	148	56	Washing	Toddler Sink - Sensor	1.8	Not Sampled	Not Sampled	Not Required	
570	148	57	Washing	Toddler Sink - Sensor	0.8	Not Sampled	Not Sampled	Not Required	
570	148	135	Washing	Adult Sink - Sensor	2.7	Not Sampled	Not Sampled	Not Required	
570	150	106	Washing	Adult Sink	Not Detected	Not Sampled	Not Sampled	Not Required	

(EPA Limit is 15 ppb)

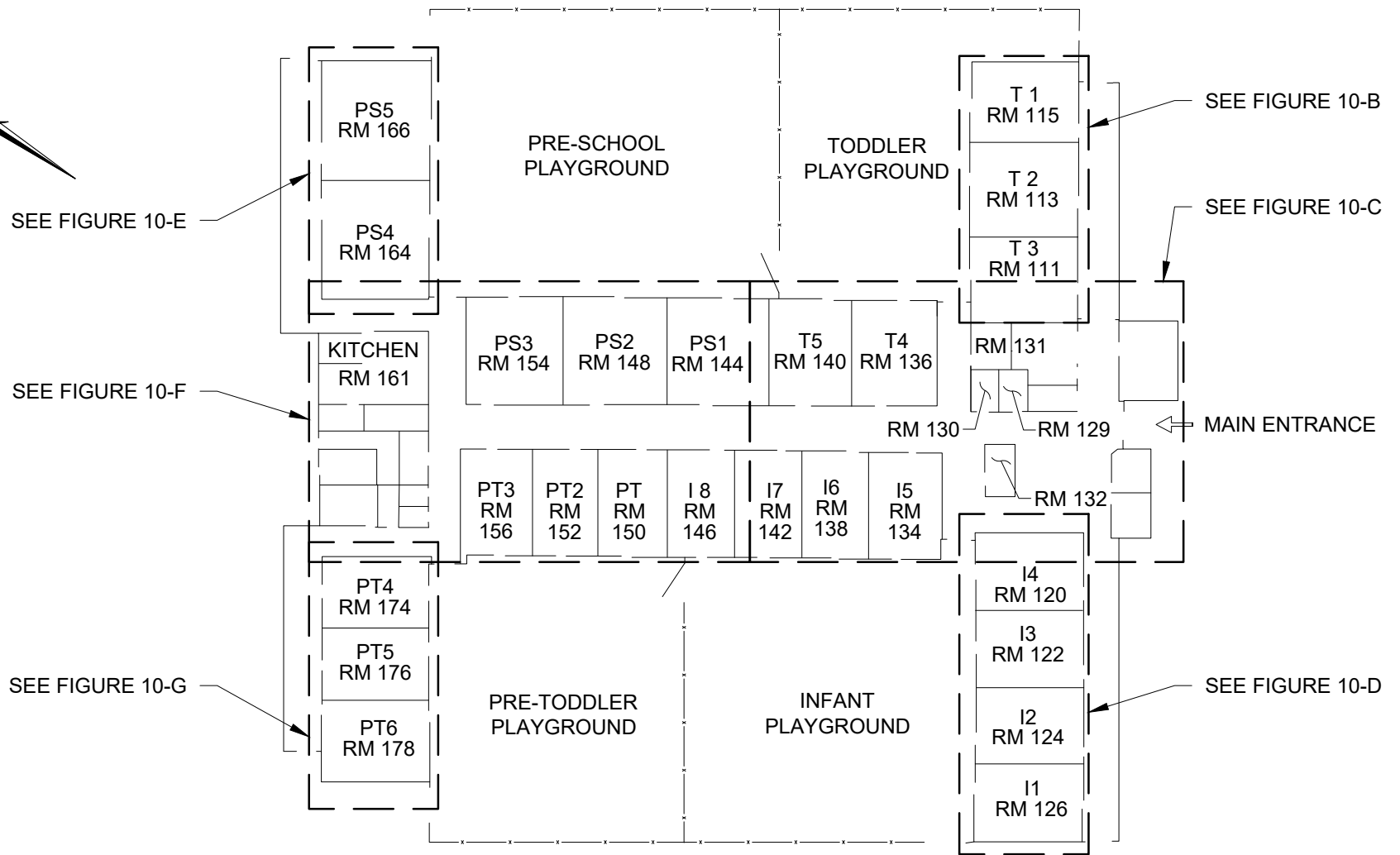
Building #	Room #	Outlet Map #	Category	Outlet Description	Initial Lead Results (ppb)	Follow-up Lead Results (ppb)			Comments
						First Draw	Flush	Confirmation	
570	150	107	Washing	Adult Sink - Sensor	1.5	Not Sampled	Not Sampled	Not Required	
570	150	108	Washing	Toddler Sink - Sensor	3.9	Not Sampled	Not Sampled	Not Required	Used for teeth brushing
570	152	103	Washing	Adult Sink	Not Detected	Not Sampled	Not Sampled	Not Required	
570	152	104	Washing	Adult Sink - Sensor	0.66	Not Sampled	Not Sampled	Not Required	
570	152	105	Washing	Toddler Sink - Sensor	2.3	Not Sampled	Not Sampled	Not Required	Used for teeth brushing
570	154	58	Washing	Adult Sink	0.66	Not Sampled	Not Sampled	Not Required	
570	154	59	Washing	Toddler Combination Sink - Faucet	0.61	Not Sampled	Not Sampled	Not Required	Used for teeth brushing
570	154	60	Drinking	Toddler Combination Sink - Water Fountain	0.8	Not Sampled	Not Sampled	Not Required	
570	154	61	Washing	Toddler Combination Sink - Faucet	1.4	Not Sampled	Not Sampled	Not Required	Used for teeth brushing
570	154	62	Drinking	Toddler Combination Sink - Water Fountain	0.56	Not Sampled	Not Sampled	Not Required	
570	154	63	Washing	Toddler Sink - Sensor	3.1	Not Sampled	Not Sampled	Not Required	
570	154	64	Washing	Toddler Sink - Sensor	2.8	Not Sampled	Not Sampled	Not Required	
570	154	136	Washing	Adult Sink	Not Detected	Not Sampled	Not Sampled	Not Required	
570	156	100	Washing	Adult Sink	0.77	Not Sampled	Not Sampled	Not Required	
570	156	101	Washing	Adult Sink - Sensor	1.4	Not Sampled	Not Sampled	Not Required	
570	156	102	Washing	Toddler Sink - Sensor	3.9	Not Sampled	Not Sampled	Not Required	
570	161	81	Cooking	Kitchen Sink	Not Detected	Not Sampled	Not Sampled	Not Required	
570	161	82	Cooking	Kitchen Sink	Not Detected	Not Sampled	Not Sampled	Not Required	
570	161	83	Cooking	Kitchen Sink	Not Detected	Not Sampled	Not Sampled	Not Required	
570	161	84	Cooking	Kitchen Sink	0.59	Not Sampled	Not Sampled	Not Required	
570	161	85	Cooking	Kitchen Sink	Not Detected	Not Sampled	Not Sampled	Not Required	
570	161	86	Cooking	Kitchen Sink	Not Detected	Not Sampled	Not Sampled	Not Required	
570	161	87	Drinking	Ice Machine	Not Detected	Not Sampled	Not Sampled	Not Required	
570	161	88	Cooking	Kitchen Sink	Not Detected	Not Sampled	Not Sampled	Not Required	
570	164	65	Washing	Adult Sink	2.3	Not Sampled	Not Sampled	Not Required	
570	164	66	Washing	Toddler Combination Sink - Faucet	Not Detected	Not Sampled	Not Sampled	Not Required	Used for teeth brushing
570	164	67	Drinking	Toddler Combination Sink - Water Fountain	0.77	Not Sampled	Not Sampled	Not Required	
570	164	68	Washing	Toddler Combination Sink - Faucet	Not Detected	Not Sampled	Not Sampled	Not Required	Used for teeth brushing
570	164	69	Drinking	Toddler Combination Sink - Water Fountain	0.58	Not Sampled	Not Sampled	Not Required	
570	164	70	Washing	Adult Sink	Not Detected	Not Sampled	Not Sampled	Not Required	
570	164	71	Washing	Toddler Sink - Sensor	4.3	Not Sampled	Not Sampled	Not Required	
570	164	72	Washing	Toddler Sink - Sensor	1.4	Not Sampled	Not Sampled	Not Required	
570	166	73	Washing	Adult Sink	0.51	Not Sampled	Not Sampled	Not Required	
570	166	74	Washing	Toddler Combination Sink - Faucet	Not Detected	Not Sampled	Not Sampled	Not Required	Used for teeth brushing
570	166	75	Drinking	Toddler Combination Sink - Water Fountain	0.61	Not Sampled	Not Sampled	Not Required	
570	166	76	Washing	Toddler Combination Sink - Faucet	0.51	Not Sampled	Not Sampled	Not Required	Used for teeth brushing
570	166	77	Drinking	Toddler Combination Sink - Water Fountain	0.65	Not Sampled	Not Sampled	Not Required	
570	166	78	Washing	Adult Sink	1.7	Not Sampled	Not Sampled	Not Required	
570	166	79	Washing	Toddler Sink - Sensor	3.7	Not Sampled	Not Sampled	Not Required	

(EPA Limit is 15 ppb)

Building #	Room #	Outlet Map #	Category	Outlet Description	Initial Lead Results (ppb)	Follow-up Lead Results (ppb)			Comments
						First Draw	Flush	Confirmation	
570	166	80	Washing	Toddler Sink - Sensor	2.3	Not Sampled	Not Sampled	Not Required	
570	174	91	Washing	Adult Sink	Not Detected	Not Sampled	Not Sampled	Not Required	
570	174	92	Washing	Toddler Sink - Sensor	3.6	Not Sampled	Not Sampled	Not Required	Used for teeth brushing
570	174	93	Washing	Adult Sink - Sensor	0.76	Not Sampled	Not Sampled	Not Required	
570	176	94	Washing	Adult Sink	0.65	Not Sampled	Not Sampled	Not Required	
570	176	95	Washing	Toddler Sink - Sensor	3.3	Not Sampled	Not Sampled	Not Required	
570	176	96	Washing	Adult Sink - Sensor	1.1	Not Sampled	Not Sampled	Not Required	
570	178	97	Washing	Adult Sink	Not Detected	Not Sampled	Not Sampled	Not Required	
570	178	98	Washing	Toddler Sink - Sensor	6.8	Not Sampled	Not Sampled	Not Required	
570	178	99	Washing	Adult Sink - Sensor	Not Sampled	Not Sampled	Not Sampled	Not Required	Fixture disconnected
570	Bathroom	89	Washing	Adult Sink - Sensor	5.3	Not Sampled	Not Sampled	Not Required	
570	Bathroom	90	Washing	Adult Sink - Sensor	5.2	Not Sampled	Not Sampled	Not Required	
570	Exterior	134	Washing	Hose Bib	Not Detected	Not Sampled	Not Sampled	Not Required	Used for waterplay
570	Exterior	137	Washing	Hose Bib	1.8	Not Sampled	Not Sampled	Not Required	Used for waterplay
570	Exterior	138	Washing	Hose Bib	1.3	Not Sampled	Not Sampled	Not Required	Used for waterplay
570	Exterior	139	Washing	Hose Bib	10	Not Sampled	Not Sampled	Not Required	Used for waterplay
570	Hallway	28	Drinking	Water Fountain - Cooler	1.4	Not Sampled	Not Sampled	Not Required	
570	Hallway	29	Drinking	Water Fountain - Cooler	1.3	Not Sampled	Not Sampled	Not Required	
570	Custodian Room	US-1	Washing	Utility Sink	Not Sampled	Not Sampled	Not Sampled	Not Required	Cleaning only

(EPA Limit is 15 ppb)

TRUE NORTH
NOT TO SCALE



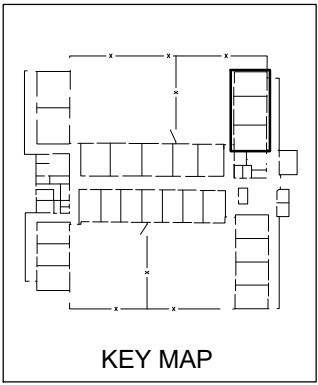
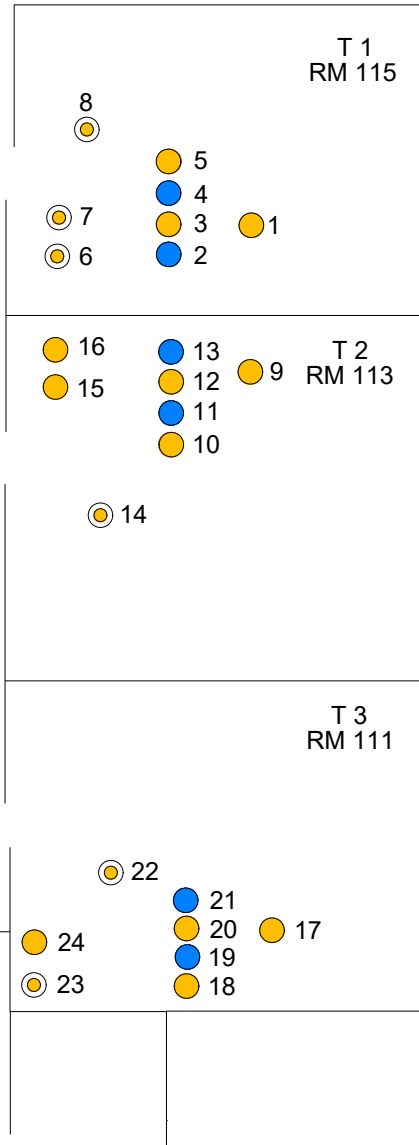
Enclosure (3)

	DATE: OCT 2019	PROJECT TITLE: LEAD IN DRINKING WATER TESTING AT PRIORITY AREAS AT JBPHH AND NCTAMS, PACIFIC
	FIGURE TITLE: PEARL HARBOR, FORD ISLAND CDC (BLDG 570) - OVERALL FACILITY MAP	

TRUE NORTH
NOT TO SCALE

TODDLER
PLAYGROUND

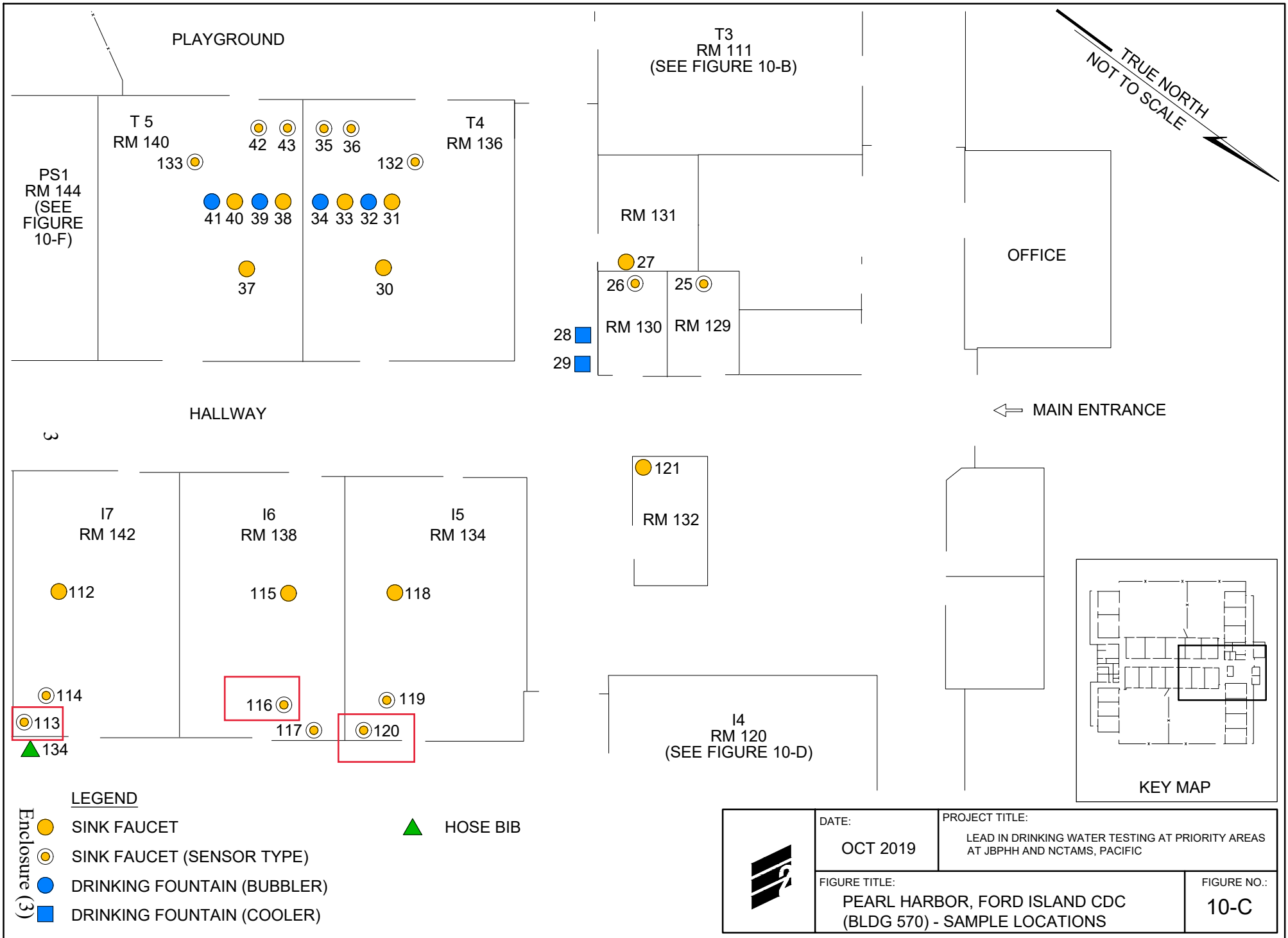
2

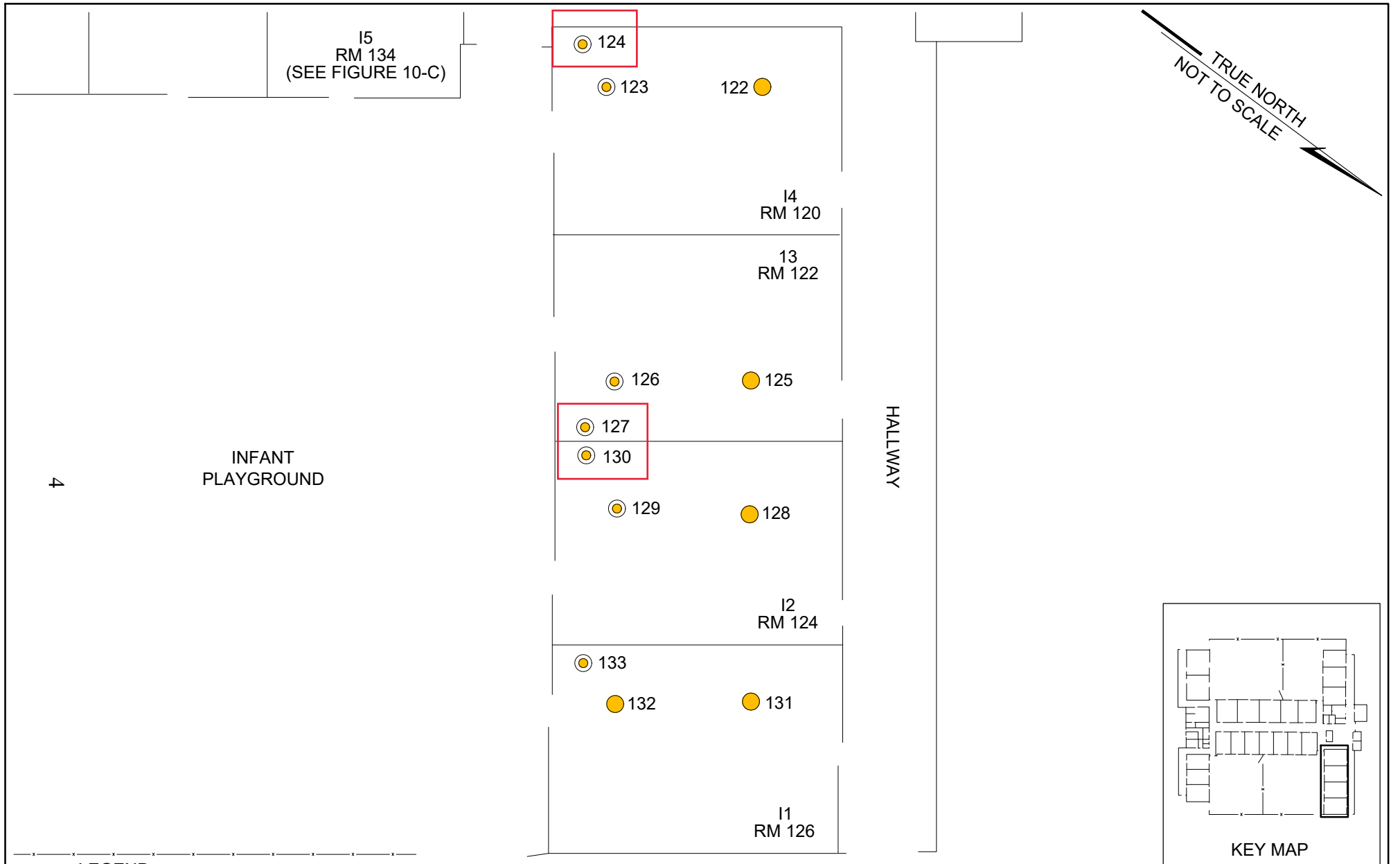


LEGEND

- SINK FAUCET
 - SINK FAUCET (SENSOR TYPE)
 - DRINKING FOUNTAIN (BUBBLER)
- Enclosure (3)

	DATE: OCT 2019	PROJECT TITLE: LEAD IN DRINKING WATER TESTING AT PRIORITY AREAS AT JBPHH AND NCTAMS, PACIFIC
	FIGURE TITLE: PEARL HARBOR, FORD ISLAND CDC (BLDG 570) - SAMPLE LOCATIONS	
		FIGURE NO.: 10-B





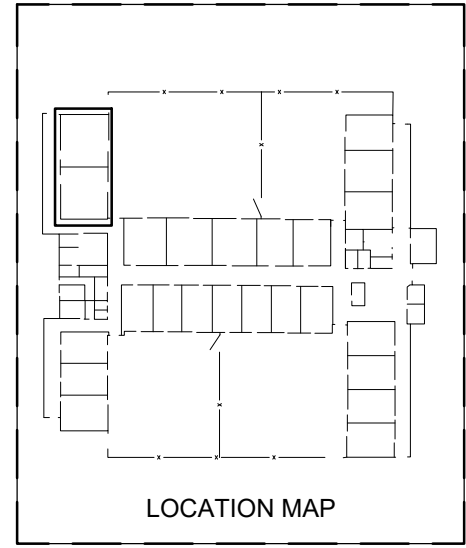
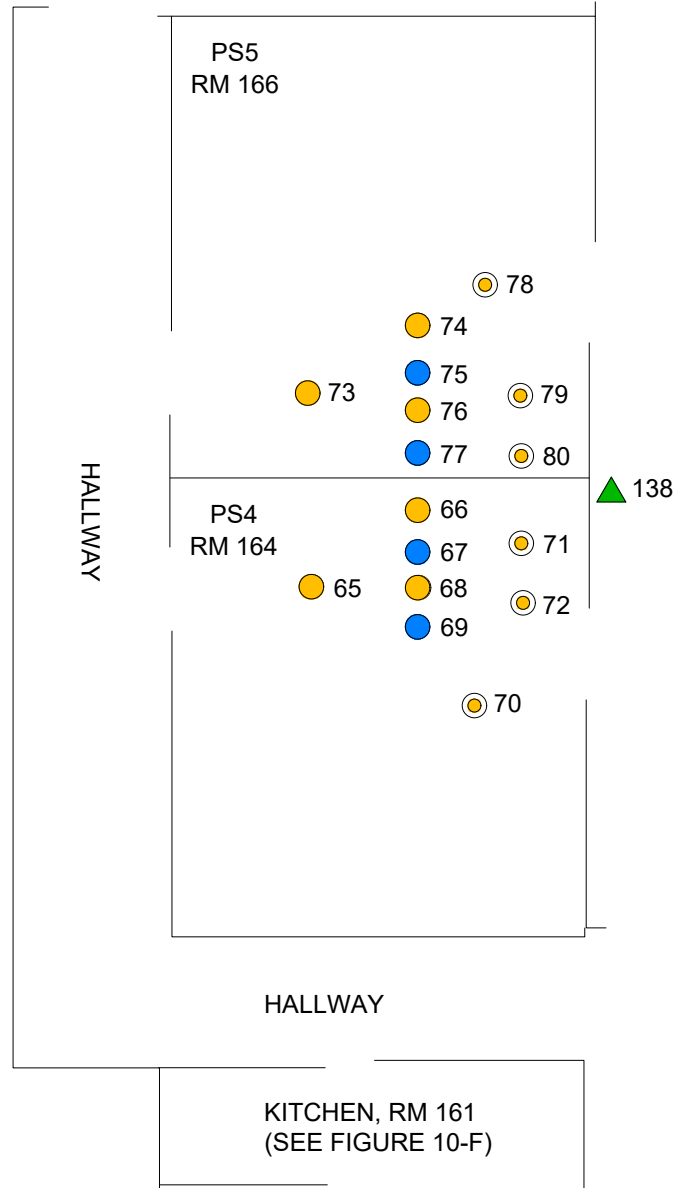
LEGEND

- SINK FAUCET
- SINK FAUCET (SENSOR TYPE)

Enclosure (3)





	DATE: OCT 2019	PROJECT TITLE: LEAD IN DRINKING WATER TESTING AT PRIORITY AREAS AT JBPHH AND NCTAMS, PACIFIC
	FIGURE TITLE: PEARL HARBOR, FORD ISLAND CDC (BLDG 570) - SAMPLE LOCATIONS	


TRUE NORTH
NOT TO SCALE

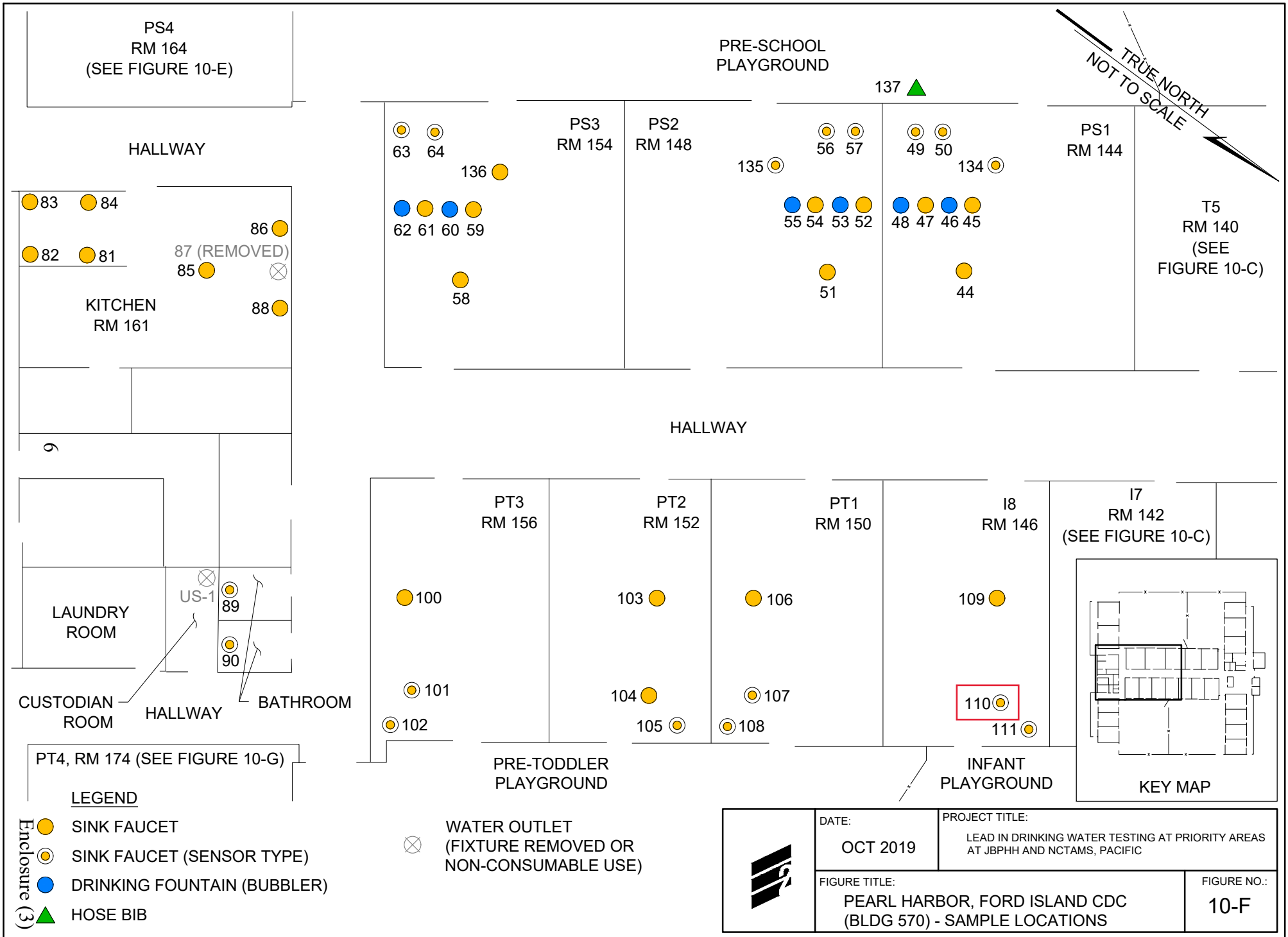


5

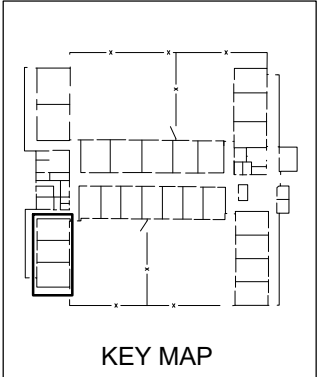
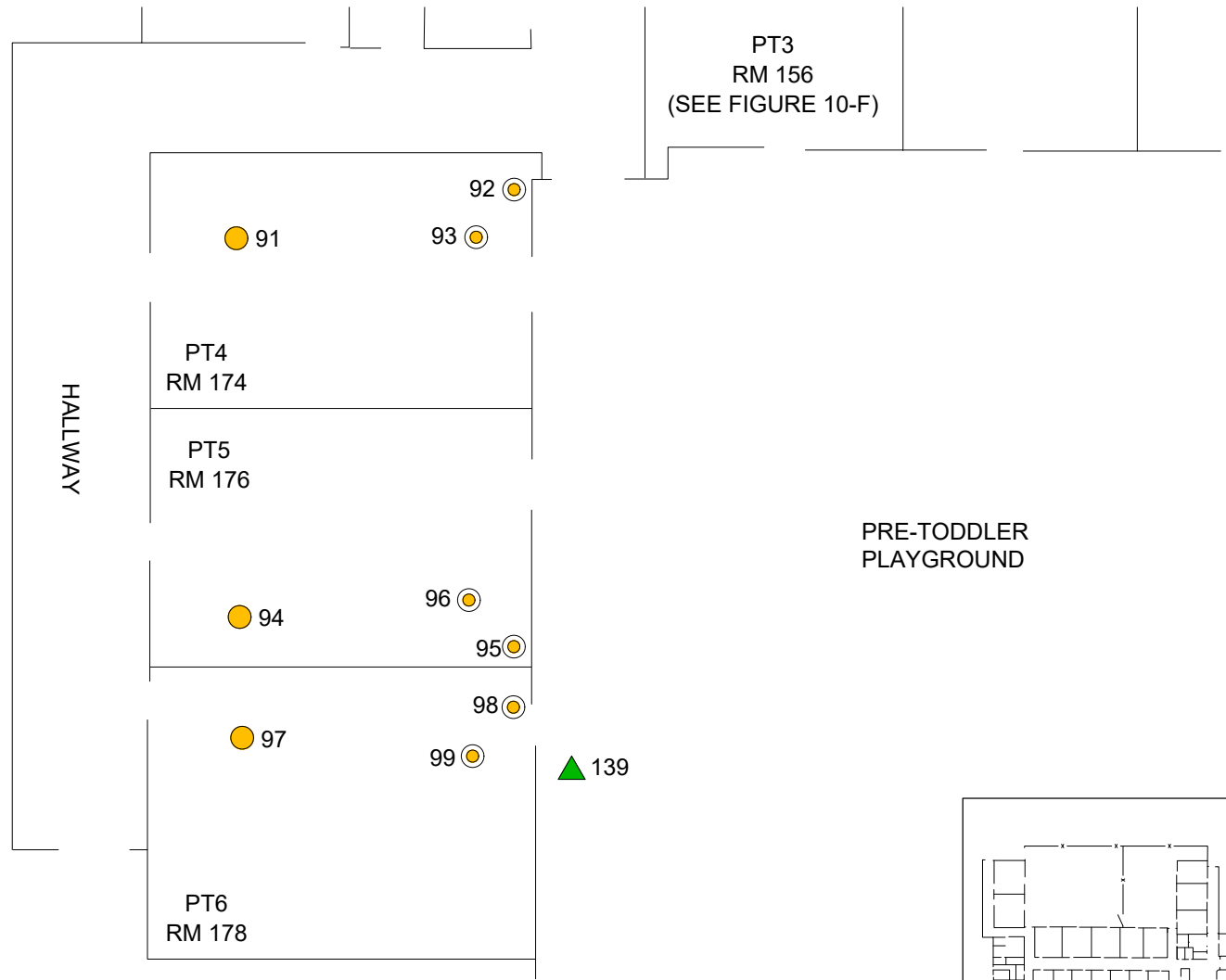
LEGEND

-  SINK FAUCET
 -  SINK FAUCET (SENSOR TYPE)
 -  DRINKING FOUNTAIN (BUBBLER)
 -  HOSE BIB
- Enclosure (3)

	DATE: OCT 2019	PROJECT TITLE: LEAD IN DRINKING WATER TESTING AT PRIORITY AREAS AT JBPHH AND NCTAMS, PACIFIC
	FIGURE TITLE: PEARL HARBOR, FORD ISLAND CDC (BLDG 570) - SAMPLE LOCATIONS	



TRUE NORTH
NOT TO SCALE



LEGEND

- Enclosure (3)
- SINK FAUCET
 - SINK FAUCET (SENSOR TYPE)
 - HOSE BIB

	DATE: OCT 2019	PROJECT TITLE: LEAD IN DRINKING WATER TESTING AT PRIORITY AREAS AT JBPHH AND NCTAMS, PACIFIC
	FIGURE TITLE: PEARL HARBOR, FORD ISLAND CDC (BLDG 570) - SAMPLE LOCATIONS	
		FIGURE NO.: 10-G