



DEPARTMENT OF THE NAVY
JOINT BASE PEARL HARBOR-HICKAM
850 TICONDEROGA ST STE 100
PEARL HARBOR HI 96860-5102

5090
Ser JB4/1048
28 Sep 2020

From: Commander, Joint Base Pearl Harbor-Hickam
To: Staff and Patrons of Joint Base Pearl Harbor-Hickam Main Child Development Center (Buildings 1597H – 1599H)

Subj: SAMPLING AND TESTING FOR LEAD IN DRINKING WATER AT MAIN CHILD DEVELOPMENT CENTER

Ref: (a) OPNAVINST 5090.1E, Environmental Readiness Program

Encl: (1) Overview of Testing Results and Corrective Actions for Main CDC (Buildings 1597H-1599H)

1. I am pleased to report that all water intended for consumption at this Child Development Center (CDC) has tested below the Environmental Protection Agency's (EPA's) lead screening level of 15 parts per billion (ppb). Initial results identified that five outlets at Main CDC did not meet EPA's lead screening level. Shortly after receiving the initial results, we took those outlets out of service and performed corrective actions. Follow-up sampling identified that the five outlets at Main CDC are now compliant with EPA's lead screening level and no further action is required. Enclosure 1 of this letter provides a summary of all sampling results for the entire facility.

2. These tests are conducted every 5 years, and samples are taken from all sources water used for drinking, cooking, or washing at all Youth Centers (YCs) and CDCs. Our latest tests were conducted in April 2020.

3. Per reference (a), we have adopted the EPA's recommendation that we test the lead content of drinking water in priority areas such as YCs and CDCs as policy and made this a top priority. Our environmental personnel conducted this testing following Navy and EPA guidelines, and samples were sent to a state-certified or accredited laboratory for analysis.

4. My team and I will continue to monitor and test water quality at all of our YCs and CDCs to ensure our water is safe to drink and use. I remain committed to the safety and health of all personnel and family members using our facilities and will keep you updated as necessary.

5. If you have questions regarding the sampling program, please contact our Installation Environmental Program Director at (808) 474-0392 or steven.christiansen@navy.mil.

R. E. HARMEYER
CAPT, CEC, U.S. Navy
By direction

Copy:
CNIC N45
CNRH N45
NAVFAC HI EV, EV1, PRJ4

Overview of Testing Results and Corrective Actions for Main CDC (Building 1597H - 1599H)

At the Main CDC, outlets used for drinking, cooking, and washing were tested. Out of 61 samples collected, five water outlets initially tested above the screening level of 15 parts per billion (ppb) for lead in drinking water in schools and childcare centers.

The first sampling event took place on November 16, 2019. We received the test results on December 5, 2019 which included five exceedances. We took those outlets out of service shortly after and conducted follow up sampling on December 11, 2019 and April 6, 2020 to verify the results. Summary table of the results from the first and follow-up samples for the five outlets:

Outlet ID#	Outlet Description	First Sample (ppb)	Follow-up Sample (ppb)			Comments and Corrective Actions
			First Draw	Flush	Additional Confirmation	
37	Kitchen sink sprayer (bldg. 1597H)	98	27	8.9	1.3	Most likely source of lead was the fixture. Fixture was replaced on 02/27/20 and retested on 04/06/20. The result was below the screening level.
11	Toddler sink (bldg. 1598H)	22	6.7	1.7	Not Required	Most likely source of lead was from infrequent use of the sink. Water should be run for 30 sec in the morning.
6	Toddler sink (bldg. 1599H)	17	12	1.2	Not Required	Most likely source of lead was from infrequent use of the sink. Water should be run for 30 sec in the morning.
3	Combination sink (bldg. 1599H)	17	18	1.5	2.9	Most likely source of lead was the fixture. Fixture was replaced on 02/27/20 and retested on 04/06/20. The result was below the screening level.
5	Adult sink (bldg. 1599H)	18	18	1.5	5.3	Most likely source of lead was the fixture. Fixture was replaced on 02/27/20 and retested on 04/06/20. The result was below the screening level.

A complete summary results table (enclosure 2) is enclosed for your information. The *Building #* and *Room #* indicate the location of the fixture. The *Outlet Map #* corresponds to the location indicated on the floor plan of the CDC (enclosure 3). The *Category* column gives information about whether the outlet is used for drinking water (water fountain), cooking (food preparation), or washing (primarily hand-washing or brushing teeth). The *Outlet Description* column contains additional information to describe the outlet. The next set of columns provide *Initial Lead Results*, and for those locations that exceeded the recommended screening level of 15 ppb the *Follow-up Lead Results*.

EPA sampling protocol requires water to not be used for between 8 and 18 hours prior to first draw sampling. Therefore, *Initial Lead Results* were from first draw samples collected early in the morning before the CDC opened and before any water was used. The *Initial Lead Results* also indicate whether resampling is required.

The *Follow-up Lead Results* includes columns for *First Draw* and *Flush* samples, which help determine the source of lead:

- If the lead concentration of 30 second flush sample resulted in lower than 15 ppb lead, the aerators were the source of lead and the outlet can be used for drinking if the aerators are cleaned on a regular basis.

- If the lead concentration of the resampled first draw (but not the follow up 30 second flush) was greater than 15 ppb, the fixture was the source of lead. These fixtures can be used if water is flushed for 30 seconds before first use of the day or if the fixtures are replaced and retesting confirms that the new fixtures do not leach lead.
- If the lead concentration of the sample following the 30 second flush was greater than 15 ppb and greater than the lead concentration of the first draw resample, the source of lead is the plumbing upstream of the outlet. These outlets should be disconnected unless upstream plumbing is replaced.

The *Comments* column indicates additional information regarding the fixture and actions to remediate the source of lead if detected.

LIPA Test Results
JBPHH - Main CDC (Building # 1597H - 1599H)

Initial Sample Date: 11/16/19, Results Date: 12/05/19
 Follow-up Sample Date: 12/11/19, Results Date: 12/27/19

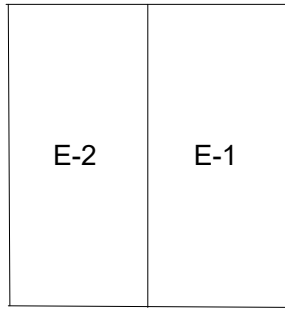
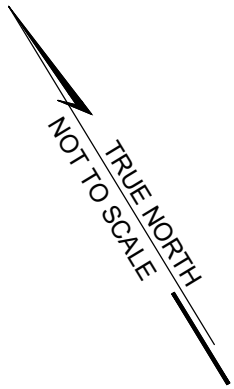
Building #	Room #	Outlet Map #	Category	Outlet Description	Initial Lead Results (ppb)	Follow-up Lead Results (ppb)			Comments
						First Draw	Flush	Confirmation	
1597H	A9	3	Washing	Toddler Sink	Not Detected	Not Sampled	Not Sampled	Not Required	
1597H	A9	4	Washing	Toddler Sink	0.64	Not Sampled	Not Sampled	Not Required	
1597H	A9	5	Washing	Toddler Sink	Not Detected	Not Sampled	Not Sampled	Not Required	
1597H	A9	6	Washing	Toddler Sink	0.79	Not Sampled	Not Sampled	Not Required	
1597H	Bathroom B-1	25	Washing	Toddler Sink	1.1	Not Sampled	Not Sampled	Not Required	
1597H	Bathroom B-2	16	Washing	Adult Sink	0.96	Not Sampled	Not Sampled	Not Required	
1597H	Bathroom B-3	23	Washing	Adult Sink	0.97	Not Sampled	Not Sampled	Not Required	
1597H	Bathroom B-4	24	Washing	Toddler Sink	2.8	Not Sampled	Not Sampled	Not Required	
1597H	Bathroom Lobby	1	Washing	Adult Sink	Not Detected	Not Sampled	Not Sampled	Not Required	
1597H	B1	17	Washing	Toddler Sink	Not Detected	Not Sampled	Not Sampled	Not Required	Used for teeth brushing
1597H	B1	18	Washing	Toddler Sink	Not Detected	Not Sampled	Not Sampled	Not Required	Used for teeth brushing
1597H	B2	14	Washing	Toddler Sink	Not Detected	Not Sampled	Not Sampled	Not Required	Used for teeth brushing
1597H	B2	15	Washing	Toddler Sink	Not Detected	Not Sampled	Not Sampled	Not Required	Used for teeth brushing
1597H	B3	21	Washing	Toddler Sink	1.1	Not Sampled	Not Sampled	Not Required	
1597H	B3	22	Washing	Toddler Sink	Not Detected	Not Sampled	Not Sampled	Not Required	
1597H	B4	19	Washing	Toddler Sink	0.81	Not Sampled	Not Sampled	Not Required	
1597H	B4	20	Washing	Toddler Sink	0.65	Not Sampled	Not Sampled	Not Required	
1597H	C1	27	Washing	Adult Sink	0.52	Not Sampled	Not Sampled	Not Required	
1597H	C1	28	Washing	Adult Sink	Not Detected	Not Sampled	Not Sampled	Not Required	
1597H	C1	34	Washing	Adult Sink	0.7	Not Sampled	Not Sampled	Not Required	
1597H	C2	35	Washing	Adult Sink	0.64	Not Sampled	Not Sampled	Not Required	
1597H	C2	36	Washing	Adult Sink	Not Detected	Not Sampled	Not Sampled	Not Required	
1597H	C3	31	Washing	Adult Sink	Not Detected	Not Sampled	Not Sampled	Not Required	
1597H	C3	32	Washing	Adult Sink	0.81	Not Sampled	Not Sampled	Not Required	
1597H	C4	29	Washing	Adult Sink	1.9	Not Sampled	Not Sampled	Not Required	
1597H	C4	30	Washing	Adult Sink	0.87	Not Sampled	Not Sampled	Not Required	
1597H	C4	33	Washing	Adult Sink	Not Detected	Not Sampled	Not Sampled	Not Required	
1597H	Exterior	7	Washing	Water Fountain - Bubbler	Not Detected	Not Sampled	Not Sampled	Not Required	
1597H	Kitchen	8	Cooking	Kitchen Sink	0.73	Not Sampled	Not Sampled	Not Required	
1597H	Kitchen	9	Cooking	Kitchen Sink	Not Detected	Not Sampled	Not Sampled	Not Required	
1597H	Kitchen	10	Cooking	Kitchen Sink	0.53	Not Sampled	Not Sampled	Not Required	
1597H	Kitchen	11	Cooking	Kitchen Sink	2.5	Not Sampled	Not Sampled	Not Required	

Building #	Room #	Outlet Map #	Category	Outlet Description	Initial Lead Results (ppb)	Follow-up Lead Results (ppb)			Comments
						First Draw	Flush	Confirmation	
1597H	Kitchen	37	Cooking	Kitchen Sink	98	27	8.9	1.3	Most likely source of lead was the fixture. Fixture was replaced on 02/27/20 and retested on 04/06/20. The result was below the screening level.
1597H	Staff Room	2	Washing	Adult Sink	0.91	Not Sampled	Not Sampled	Not Required	
1597H	Staff Room	38	Drinking	Portable Water Cooler	Not Detected	Not Sampled	Not Sampled	Not Required	
1597H	Storage Enclosure	39	Washing	Hose Bib	Not Detected	Not Sampled	Not Sampled	Not Required	Used for waterplay
1598H	Bathroom	11	Washing	Toddler Sink	22	6.7	1.7	Not Required	Most likely source of lead was from infrequent use of the sink. Water should be run for 30 sec in the morning
1598H	Bathroom	4	Washing	Adult Sink	4.6	Not Sampled	Not Sampled	Not Required	
1598H	Bathroom	7	Washing	Toddler Sink	2.2	Not Sampled	Not Sampled	Not Required	
1598H	D1	5	Washing	Toddler Sink	Not Detected	Not Sampled	Not Sampled	Not Required	Used for teeth brushing
1598H	D1	6	Washing	Toddler Sink	Not Detected	Not Sampled	Not Sampled	Not Required	Used for teeth brushing
1598H	D2	2	Washing	Toddler Sink	Not Detected	Not Sampled	Not Sampled	Not Required	Used for teeth brushing
1598H	D2	3	Washing	Toddler Sink	Not Detected	Not Sampled	Not Sampled	Not Required	Used for teeth brushing
1598H	D3	12	Washing	Toddler Sink	0.62	Not Sampled	Not Sampled	Not Required	
1598H	D3	13	Washing	Toddler Sink	0.5	Not Sampled	Not Sampled	Not Required	
1598H	D4	10	Washing	Toddler Sink	0.76	Not Sampled	Not Sampled	Not Required	
1598H	D4	9	Drinking	Toddler Sink	2.1	Not Sampled	Not Sampled	Not Required	
1598H	Exterior	14	Washing	Hose Bib	Not Detected	Not Sampled	Not Sampled	Not Required	Used for waterplay
1598H	Exterior	15	Washing	Hose Bib	6	Not Sampled	Not Sampled	Not Required	Used for waterplay
1599H	Bathroom	13	Washing	Adult Sink	5.8	Not Sampled	Not Sampled	Not Required	
1599H	E1	6	Washing	Toddler Sink	17	12	1.2	Not Required	Most likely source of lead was from infrequent use of the sink. Water should be run for 30 sec in the morning
1599H	E1	7	Washing	Toddler Sink	12	Not Sampled	Not Sampled	Not Required	
1599H	E1	8	Washing	Toddler Combination Sink - Faucet	11	Not Sampled	Not Sampled	Not Required	
1599H	E1	9	Washing	Toddler Combination Sink - Water Fountain	14	Not Sampled	Not Sampled	Not Required	
1599H	E1	12	Washing	Adult Sink - Sensor	Not Sampled	Not Sampled	Not Sampled	Not Required	Fixture broken
1599H	E2	2	Drinking	Toddler Combination Sink - Water Fountain	6.9	Not Sampled	Not Sampled	Not Required	
1599H	E2	3	Washing	Toddler Combination Sink - Faucet	17	18	1.5	2.9	Most likely source of lead was the fixture. Fixture was replaced on 02/27/20 and retested on 04/06/20. The result was below the screening level.
1599H	E2	4	Washing	Toddler Sink	11	Not Sampled	Not Sampled	Not Required	

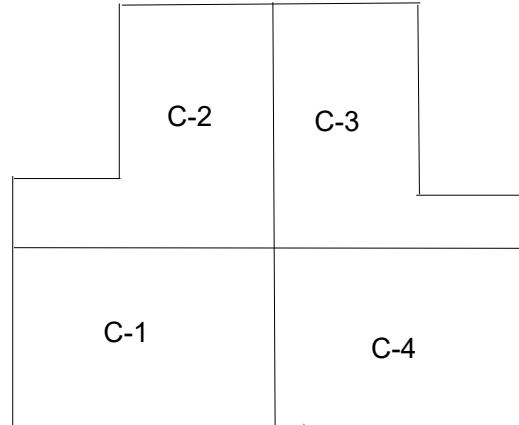
(EPA Limit is 15 ppb)

Building #	Room #	Outlet Map #	Category	Outlet Description	Initial Lead Results (ppb)	Follow-up Lead Results (ppb)			Comments
						First Draw	Flush	Confirmation	
1599H	E2	5	Washing	Adult Sink	18	18	1.5	5.3	Most likely source of lead was the fixture. Fixture was replaced on 02/27/20 and retested on 04/06/20. The result was below the screening level.
1599H	E2	11	Washing	Adult Sink - Sensor	Not Sampled	Not Sampled	Not Sampled	Not Required	Fixture broken
1599H	Exterior	10	Washing	Hose Bib	1	Not Sampled	Not Sampled	Not Required	
1599H	Bathroom	HB-3	Washing	Hose Bib	Not Sampled	Not Sampled	Not Sampled	Not Required	Cleaning only
1597H	Custodian Room	US-2	Washing	Utility Sink	Not Sampled	Not Sampled	Not Sampled	Not Required	Cleaning only
1597H	Custodian Room	US-3	Washing	Utility Sink	Not Sampled	Not Sampled	Not Sampled	Not Required	Cleaning only
1598H	Custodian Room	US-5	Washing	Utility Sink	Not Sampled	Not Sampled	Not Sampled	Not Required	Cleaning only
1599H	Custodian Room	US-6	Washing	Utility Sink	Not Sampled	Not Sampled	Not Sampled	Not Required	Cleaning only
1597H	Exterior	HB-1	Watering	Hose Bib	Not Sampled	Not Sampled	Not Sampled	Not Required	Landscaping only
1597H	Exterior	HB-2	Watering	Hose Bib	Not Sampled	Not Sampled	Not Sampled	Not Required	Landscaping only
1597H	Exterior	US-1	Washing	Utility Sink	Not Sampled	Not Sampled	Not Sampled	Not Required	Cleaning only
1599H	Exterior	1	Washing	Hose Bib	Not Sampled	Not Sampled	Not Sampled	Not Required	Fixture Removed
1597H	Laundry Room	US-4	Washing	Utility Sink	Not Sampled	Not Sampled	Not Sampled	Not Required	Cleaning only
1599H	Laundry Room	US-7	Washing	Utility Sink	Not Sampled	Not Sampled	Not Sampled	Not Required	Cleaning only

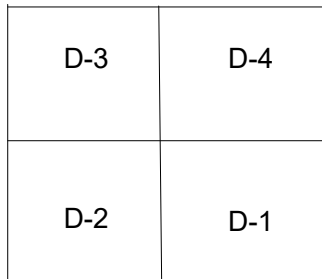
(EPA Limit is 15 ppb)



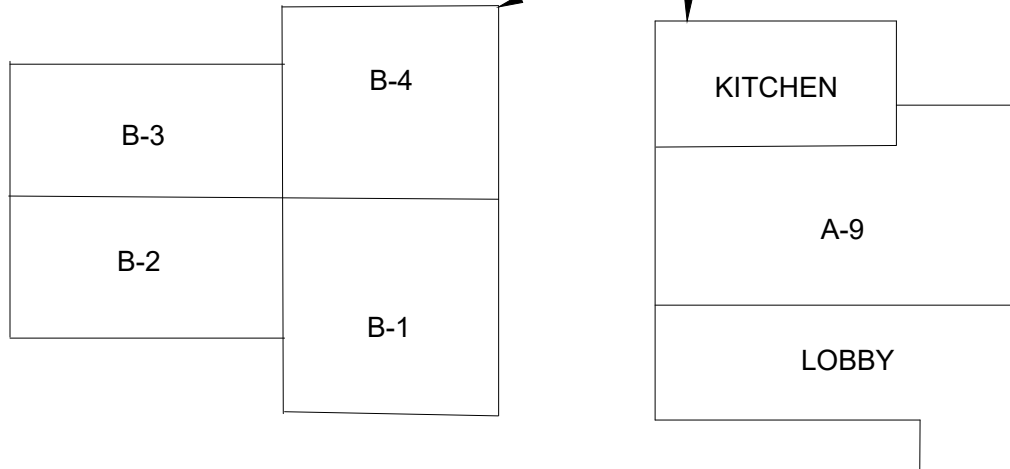
BLDG 1599H
(SEE FIGURE 4-F)



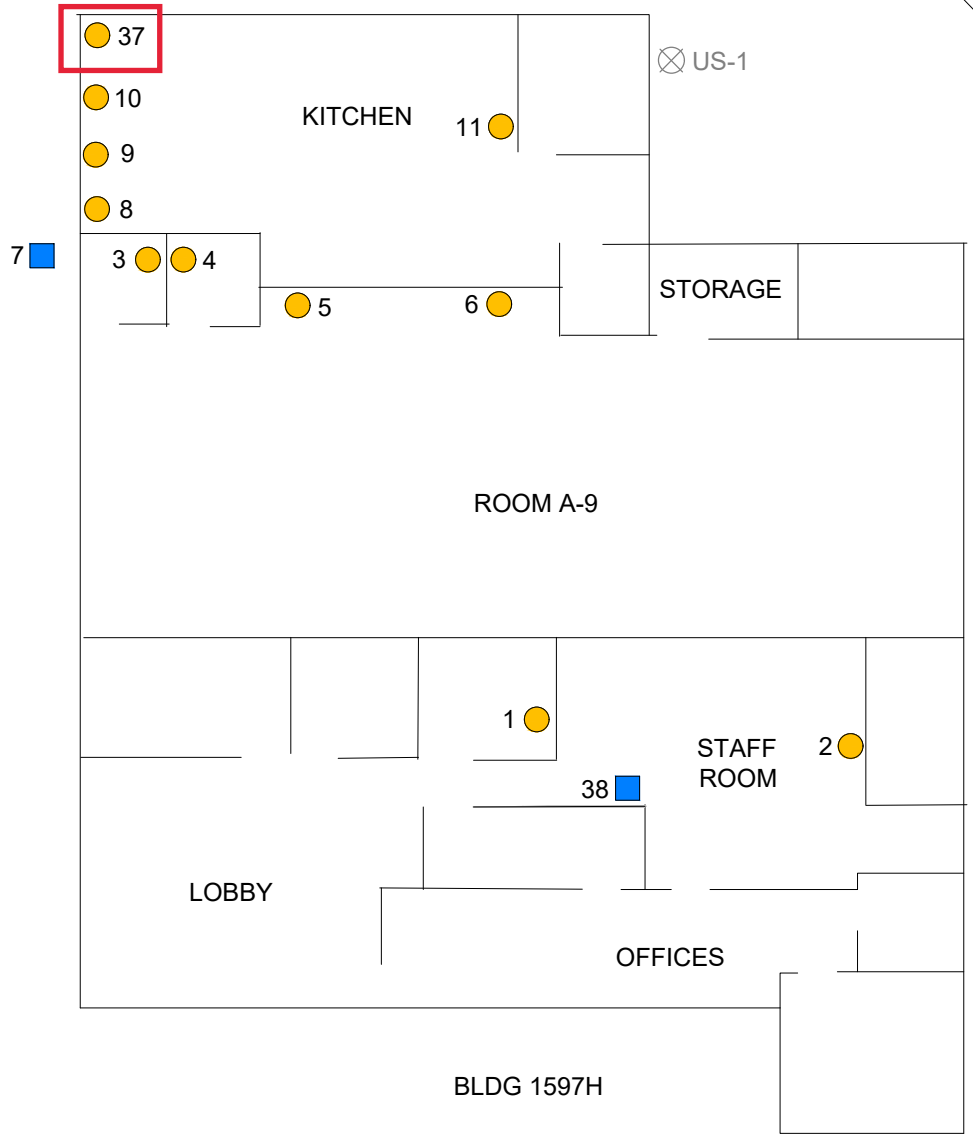
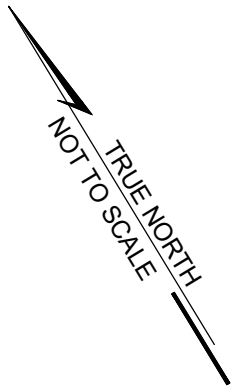
BLDG 1597H
(SEE FIGURES 4-B TO 4-D)






BLDG 1598H
(SEE FIGURE 4-E)




	DATE: DEC 2019	PROJECT TITLE: LEAD IN DRINKING WATER TESTING AT PRIORITY AREAS AT JBPHH AND NCTAMS, PACIFIC
	FIGURE TITLE: HICKAM, MAIN CDC (BLDG 1597H-1599H) - OVERALL FACILITY MAP	
	FIGURE NO.:	4-A




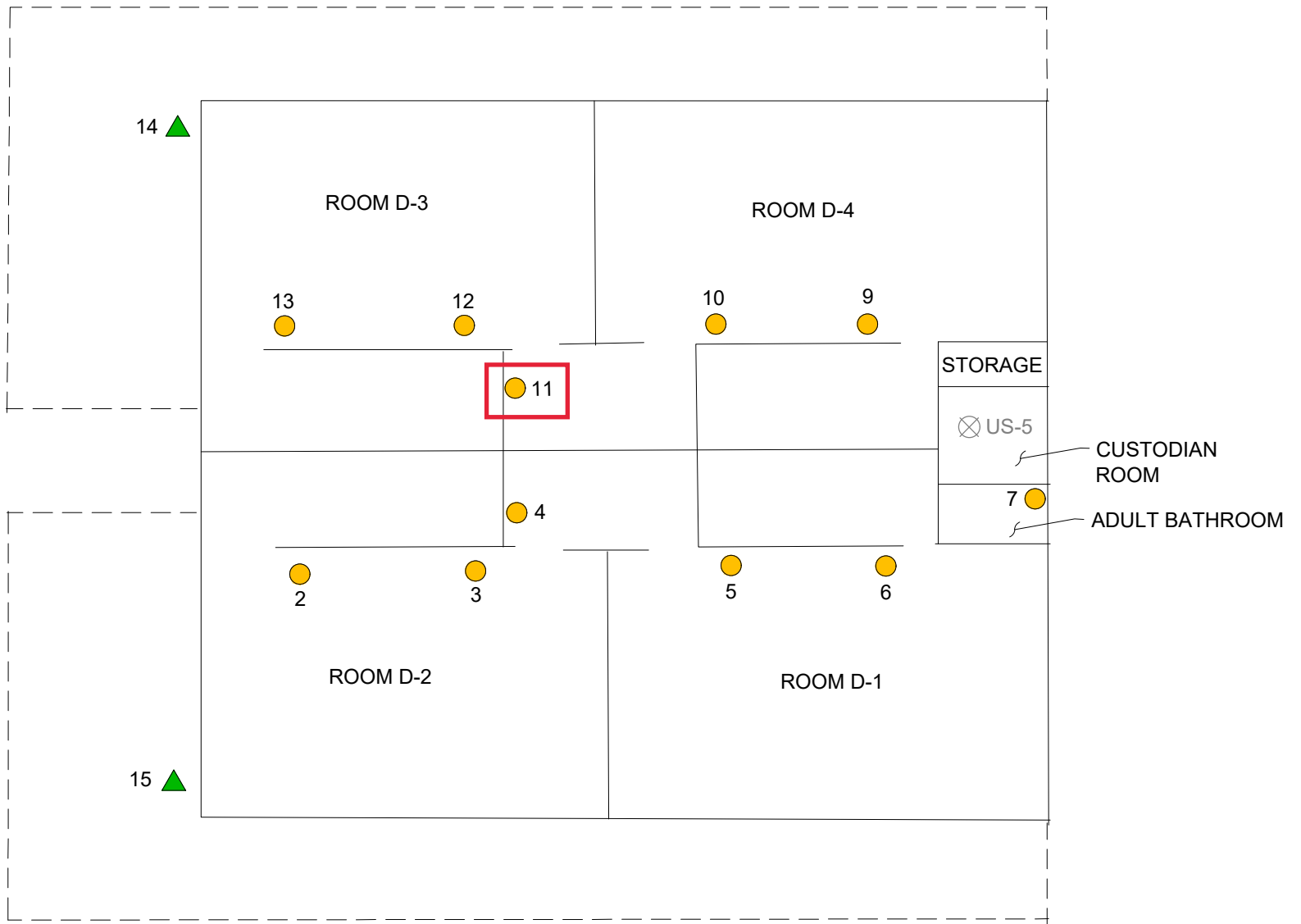
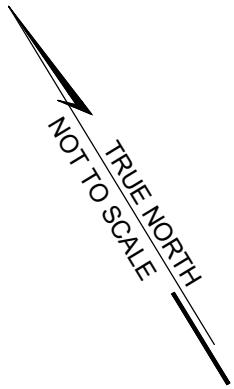
LEGEND

-  SINK FAUCET
-  DRINKING FOUNTAIN (COOLER) OR PORTABLE WATER COOLER
-  HOSE BIB




 WATER OUTLET (NON-CONSUMABLE USE)

Enclosure (3)


	DATE: DEC 2019	PROJECT TITLE: LEAD IN DRINKING WATER TESTING AT PRIORITY AREAS AT JBPHH AND NCTAMS, PACIFIC
	FIGURE TITLE: HICKAM, MAIN CDC (BLDG 1597H-1599H) - BLDG 1597H SAMPLE LOCATIONS	

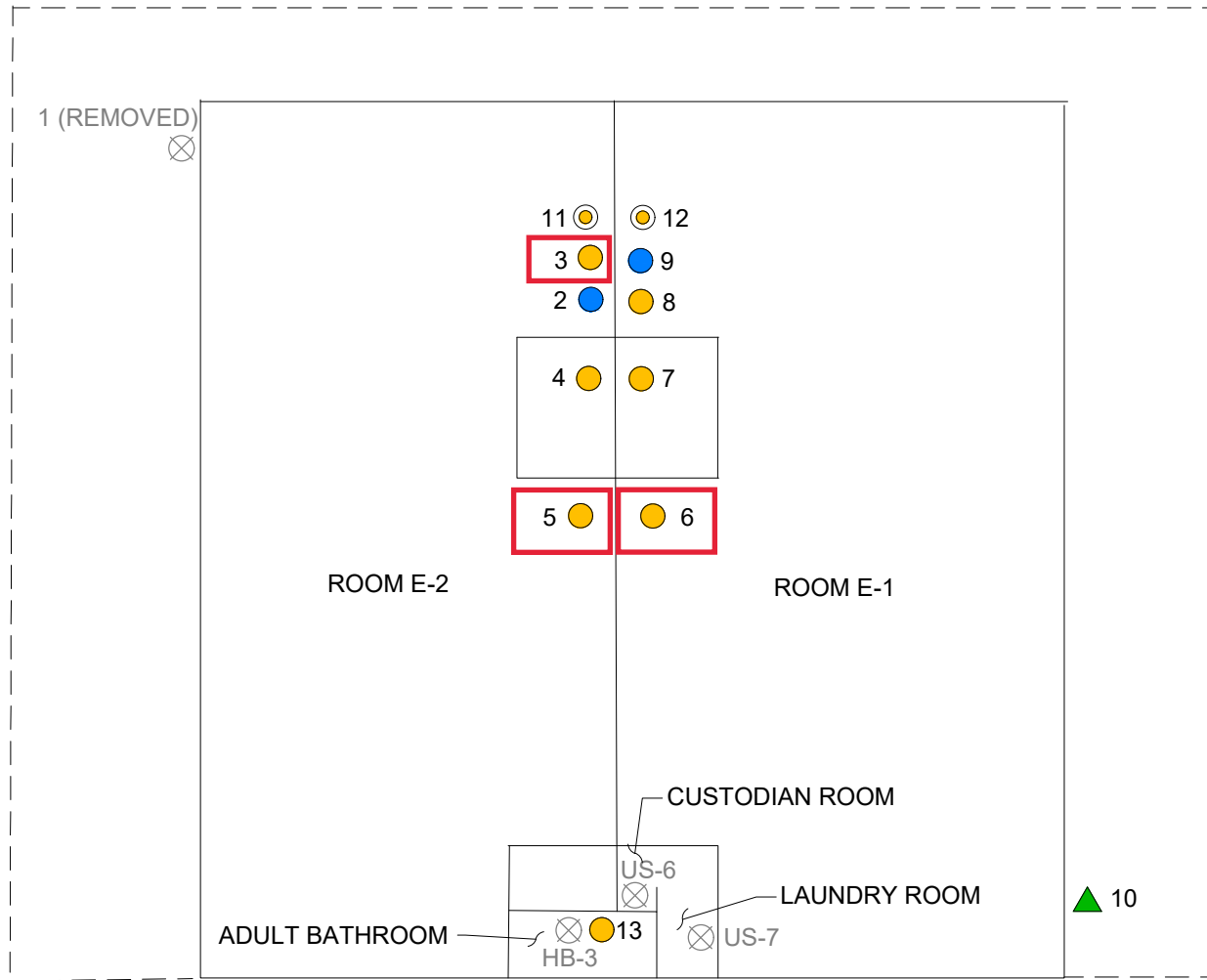
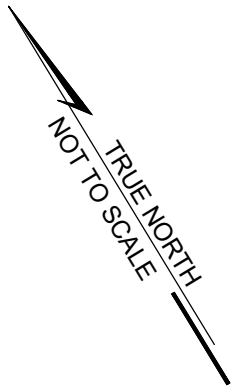


LEGEND

-  SINK FAUCET
 -  HOSE BIB
 -  WATER OUTLET (NON-CONSUMABLE USE)
- Enclosure (3)

BLDG 1598H

	DATE: DEC 2019	PROJECT TITLE: LEAD IN DRINKING WATER TESTING AT PRIORITY AREAS AT JBPHH AND NCTAMS, PACIFIC
	FIGURE TITLE: HICKAM, MAIN CDC (BLDG 1597H-1599H) - BLDG 1598H SAMPLE LOCATIONS	
		FIGURE NO.: 4-E



BLDG 1599H

LEGEND

- SINK FAUCET
 - SINK FAUCET (SENSOR TYPE)
 - DRINKING FOUNTAIN (BUBBLER)
 - HOSE BIB
- Enclosure (3)

- WATER OUTLET (FIXTURE REMOVED OR NON-CONSUMABLE USE)

	DATE: DEC 2019	PROJECT TITLE: LEAD IN DRINKING WATER TESTING AT PRIORITY AREAS AT JBPHH AND NCTAMS, PACIFIC
	FIGURE TITLE: HICKAM, MAIN CDC (BLDG 1597H-1599H) - BLDG 1599H SAMPLE LOCATIONS	
		FIGURE NO.: 4-F