



**DEPARTMENT OF THE NAVY**  
JOINT BASE PEARL HARBOR-HICKAM  
850 TICONDEROGA ST STE 100  
PEARL HARBOR HI 96860-5102

5090  
Ser JB4/1049  
28 Sep 2020

From: Commander, Joint Base Pearl Harbor-Hickam  
To: Staff and Patrons of Joint Base Pearl Harbor-Hickam Navy Hale Keiki (Building 366)

Subj: SAMPLING AND TESTING FOR LEAD IN DRINKING WATER AT NAVY HALE KEIKI

Ref: (a) OPNAVINST 5090.1E, Environmental Readiness Program

Encl: (1) Overview of Testing Results and Corrective Actions for Navy Hale Keiki (Building 366)

1. I am pleased to report that all water intended for consumption at this Youth Center (YC) has tested below the Environmental Protection Agency's (EPA's) lead screening level of 15 parts per billion (ppb). Initial results identified that two outlets at Navy Hale Keiki did not meet EPA's lead screening level. Shortly after receiving the initial results, we took the two outlets out of service and performed corrective actions. Follow-up sampling identified that the outlet at Navy Hale Keiki is now compliant with EPA's lead screening level and no further action is required. Enclosure 1 of this letter provides a summary of all sampling results for the entire facility.

2. These tests are conducted every 5 years, and samples are taken from all sources water used for drinking, cooking, or washing at all YCs and Child Development Centers (CDCs). Our latest tests were conducted in April 2020.

3. Per reference (a), we have adopted the EPA's recommendation that we test the lead content of drinking water in priority areas such as YCs and CDCs as policy and made this a top priority. Our environmental personnel conducted this testing following Navy and EPA guidelines, and samples were sent to a state-certified or accredited laboratory for analysis.

4. My team and I will continue to monitor and test water quality at all of our YCs and CDCs to ensure our water is safe to drink and use. I remain committed to the safety and health of all personnel and family members using our facilities and will keep you updated as necessary.

5. If you have questions regarding the sampling program, please contact our Installation Environmental Program Director at (808) 474-0392 or [steven.christiansen@navy.mil](mailto:steven.christiansen@navy.mil).

R. E. HARMEYER  
CAPT, CEC, U.S. Navy  
By direction

Copy:  
CNIC N45  
CNRH N45  
NAVFAC HI EV, EV1, PRJ4

## Overview of Testing Results and Corrective Actions for Navy Hale Keiki (Building 366)

At the Navy Hale Keiki, outlets used for drinking, cooking, and washing were tested. Out of 49 samples collected, two water outlets initially tested above the screening level of 15 parts per billion (ppb) for lead in drinking water in schools and childcare centers.

The first sampling event took place on November 23, 2019. We received the test results on December 12, 2019 which included two exceedances. We took those outlets out of service shortly after and conducted follow up sampling on December 18, 2019 and April 6, 2020 to verify the results. Summary table of the results from the first and follow-up samples for the two outlets:

Outlet ID#	Outlet Description	First Sample (ppb)	Follow-up Sample (ppb)			Comments and Corrective Actions
			First Draw	Flush	Additional Confirmation	
44	Exterior hose bibb (bldg. 366)	22	120	3.6	0.15	Most likely source of lead was from the hose bibb fixture and the hose. Both were replaced on 01/16/20 and retested on 04/06/20. The result was below the screening level.
47	Exterior hose bibb (bldg. 366)	16	4.4	Not Detected	Not Required	Most likely source of lead was from infrequent use of the outlet. Water should be run for 30 sec in the morning.

A complete summary results table (enclosure 2) is enclosed for your information. The *Building #* and *Room #* indicate the location of the fixture. The *Outlet Map #* corresponds to the location indicated on the floor plan of the CDC (enclosure 3). The *Category* column gives information about whether the outlet is used for drinking water (water fountain), cooking (food preparation), or washing (primarily hand-washing or brushing teeth). The *Outlet Description* column contains additional information to describe the outlet. The next set of columns provide *Initial Lead Results*, and for those locations that exceeded the recommended screening level of 15 ppb the *Follow-up Lead Results*.

EPA sampling protocol requires water to not be used for between 8 and 18 hours prior to first draw sampling. Therefore, *Initial Lead Results* were from first draw samples collected early in the morning before the CDC opened and before any water was used. The *Initial Lead Results* also indicate whether resampling is required.

The *Follow-up Lead Results* includes columns for *First Draw* and *Flush* samples, which help determine the source of lead:

- If the lead concentration of 30 second flush sample resulted in lower than 15 ppb lead, the aerators were the source of lead and the outlet can be used for drinking if the aerators are cleaned on a regular basis.
- If the lead concentration of the resampled first draw (but not the follow up 30 second flush) was greater than 15 ppb, the fixture was the source of lead. These fixtures can be used if water is flushed for 30 seconds before first use of the day or if the fixtures are replaced and retesting confirms that the new fixtures do not leach lead.
- If the lead concentration of the sample following the 30 second flush was greater than 15 ppb and greater than the lead concentration of the first draw resample, the source of lead is the plumbing

upstream of the outlet. These outlets should be disconnected unless upstream plumbing is replaced.

The *Comments* column indicates additional information regarding the fixture and actions to remediate the source of lead if detected.

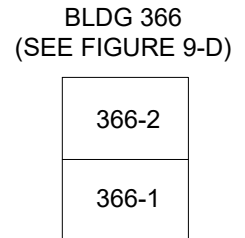
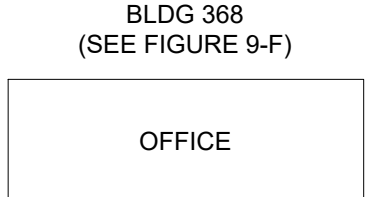
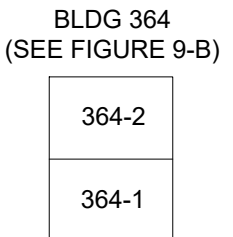
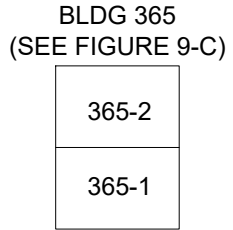
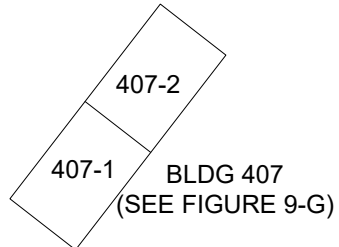
**LIPA Test Results**  
**JBPHH - Navy Hale Keiki (Building # 364-368 & 407)**

Initial Sample Date: 11/23/19, Results Date: 12/12/19  
 Follow-up Sample Date: 12/18/19, Results Date: 01/08/20

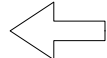
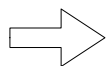
Building #	Room #	Outlet Map #	Category	Outlet Description	Initial Lead Results (ppb)	Follow-up Lead Results (ppb)			Comments
						First Draw	Flush	Confirmation	
364	1	12	Washing	Toddler Sink	1.2	Not Sampled	Not Sampled	Not Required	
364	1	13	Drinking	Toddler Water Fountain - Bubbler	0.66	Not Sampled	Not Sampled	Not Required	
364	2	9	Washing	Toddler Sink	0.78	Not Sampled	Not Sampled	Not Required	
364	2	10	Drinking	Toddler Water Fountain - Bubbler	3.5	Not Sampled	Not Sampled	Not Required	
364	Bathroom	6	Washing	Toddler Sink - Sensor	4.8	Not Sampled	Not Sampled	Not Required	
364	Bathroom	7	Washing	Toddler Sink - Sensor	5.8	Not Sampled	Not Sampled	Not Required	
364	Bathroom	8	Washing	Toddler Sink - Sensor	8.2	Not Sampled	Not Sampled	Not Required	
364	Exterior	11	Drinking	Water Fountain - Cooler	Not Detected	Not Sampled	Not Sampled	Not Required	
364	Exterior	11A	Drinking	Water Fountain - Cooler (Water Bottle Outlet)	Not Detected	Not Sampled	Not Sampled	Not Required	
365	1	20	Washing	Toddler Sink	1.6	Not Sampled	Not Sampled	Not Required	
365	1	21	Drinking	Toddler Water Fountain - Bubbler	1.6	Not Sampled	Not Sampled	Not Required	
365	2	17	Drinking	Toddler Water Fountain - Bubbler	0.74	Not Sampled	Not Sampled	Not Required	
365	2	18	Washing	Toddler Sink	Not Detected	Not Sampled	Not Sampled	Not Required	
365	Bathroom	14	Washing	Toddler Sink - Sensor	8.4	Not Sampled	Not Sampled	Not Required	
365	Bathroom	15	Washing	Toddler Sink - Sensor	6.8	Not Sampled	Not Sampled	Not Required	
365	Bathroom	16	Washing	Water Fountain - Bubbler	Not Sampled	Not Sampled	Not Sampled	Not Required	Fixture Broken
366	1	39	Washing	Toddler Sink	1.7	Not Sampled	Not Sampled	Not Required	
366	1	40	Drinking	Toddler Water Fountain - Bubbler	Not Detected	Not Sampled	Not Sampled	Not Required	
366	2	41	Drinking	Toddler Water Fountain - Bubbler	0.74	Not Sampled	Not Sampled	Not Required	
366	2	42	Washing	Toddler Sink	1	Not Sampled	Not Sampled	Not Required	
366	Bathroom	37	Washing	Toddler Sink - Sensor	2	Not Sampled	Not Sampled	Not Required	
366	Bathroom	38	Washing	Toddler Sink - Sensor	1.6	Not Sampled	Not Sampled	Not Required	
366	Exterior	43	Drinking	Water Fountain - Bubbler	0.86	Not Sampled	Not Sampled	Not Required	
366	Exterior	44	Washing	Hose Bib	22	120	3.6	0.15	Most likely source of lead was from the hose bibb fixture and the hose. Both were replaced on 01/16/20 and retested on 04/06/20. The result was below the screening level
366	Exterior	45	Washing	Hose Bib	Not Detected	Not Sampled	Not Sampled	Not Required	
366	Exterior	47	Washing	Hose Bib	16	4.4	Not Detected	Not Required	Most likely source of lead was from infrequent use of the outlet. Water should be run for 30 sec in the morning.
367	1	28	Drinking	Toddler Water Fountain - Bubbler	Not Sampled	Not Sampled	Not Sampled	Not Required	Fixture Broken
367	1	29	Washing	Toddler Sink	2.8	Not Sampled	Not Sampled	Not Required	

Building #	Room #	Outlet Map #	Category	Outlet Description	Initial Lead Results (ppb)	Follow-up Lead Results (ppb)			Comments
						First Draw	Flush	Confirmation	
367	2	32	Drinking	Toddler Water Fountain - Bubbler	0.77	Not Sampled	Not Sampled	Not Required	
367	2	33	Washing	Toddler Sink	0.96	Not Sampled	Not Sampled	Not Required	
367	3	35	Drinking	Toddler Water Fountain - Bubbler	Not Detected	Not Sampled	Not Sampled	Not Required	
367	3	36	Washing	Toddler Sink	0.89	Not Sampled	Not Sampled	Not Required	
367	Bathroom	26	Washing	Toddler Sink - Sensor	1.8	Not Sampled	Not Sampled	Not Required	
367	Bathroom	27	Washing	Toddler Sink - Sensor	0.59	Not Sampled	Not Sampled	Not Required	
367	Bathroom	30	Washing	Toddler Sink - Sensor	1.5	Not Sampled	Not Sampled	Not Required	
367	Bathroom	31	Washing	Toddler Sink - Sensor	1.1	Not Sampled	Not Sampled	Not Required	
367	Exterior	34	Drinking	Water Fountain - Bubbler	0.69	Not Sampled	Not Sampled	Not Required	
367	Exterior	46	Washing	Hose Bib	0.58	Not Sampled	Not Sampled	Not Required	Used for waterplay
368	Exterior	1	Drinking	Water Fountain - Cooler	Not Detected	Not Sampled	Not Sampled	Not Required	
368	Exterior	1A	Drinking	Water Fountain - Cooler (Water Bottle Outlet)	Not Detected	Not Sampled	Not Sampled	Not Required	
368	Mens Bathroom	3	Washing	Adult Sink	1.7	Not Sampled	Not Sampled	Not Required	
368	Utility Room	2	Washing	Utility Sink	0.92	Not Sampled	Not Sampled	Not Required	
368	Utility Room	2A	Cooking	Kitchen Sink	0.91	Not Sampled	Not Sampled	Not Required	Serves as teachers lounge/kitchen
368	Womens Bathroom	4	Washing	Adult Sink - Sensor	6	Not Sampled	Not Sampled	Not Required	
368	Womens Bathroom	5	Washing	Adult Sink - Sensor	7.4	Not Sampled	Not Sampled	Not Required	
407	1	22	Washing	Toddler Sink	Not Detected	Not Sampled	Not Sampled	Not Required	
407	1	23	Washing	Adult Sink	1	Not Sampled	Not Sampled	Not Required	
407	2	24	Washing	Toddler Sink	2.3	Not Sampled	Not Sampled	Not Required	
407	2	25	Washing	Adult Sink	1.5	Not Sampled	Not Sampled	Not Required	
364	Exterior	HB-1	Watering	Hose Bib	Not Sampled	Not Sampled	Not Sampled	Not Required	Landscaping use only
364	Exterior	HB-2	Watering	Hose Bib	Not Sampled	Not Sampled	Not Sampled	Not Required	Landscaping use only
365	Exterior	HB-3	Watering	Hose Bib	Not Sampled	Not Sampled	Not Sampled	Not Required	Landscaping use only
365	Exterior	HB-4	Watering	Hose Bib	Not Sampled	Not Sampled	Not Sampled	Not Required	Landscaping use only
365	Exterior	HB-5	Watering	Hose Bib	Not Sampled	Not Sampled	Not Sampled	Not Required	Landscaping use only
367	Exterior	HB-6	Watering	Hose Bib	Not Sampled	Not Sampled	Not Sampled	Not Required	Landscaping use only
367	Exterior	HB-7	Watering	Hose Bib	Not Sampled	Not Sampled	Not Sampled	Not Required	Landscaping use only
367	Exterior	US-1	Washing	Utility Sink	Not Sampled	Not Sampled	Not Sampled	Not Required	Cleaning use only
368	Exterior	HB-8	Watering	Hose Bib	Not Sampled	Not Sampled	Not Sampled	Not Required	Landscaping use only
407	Exterior	HB-9	Watering	Hose Bib	Not Sampled	Not Sampled	Not Sampled	Not Required	Landscaping use only
407	Exterior	HB-10	Watering	Hose Bib	Not Sampled	Not Sampled	Not Sampled	Not Required	Landscaping use only

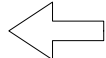
(EPA Limit is 15 ppb)



RADFORD HIGH SCHOOL



DRIVEWAY



Enclosure (3)

	DATE: <b>DEC 2019</b>	PROJECT TITLE: LEAD IN DRINKING WATER TESTING AT PRIORITY AREAS AT JBPHH AND NCTAMS, PACIFIC
	FIGURE TITLE: PEARL HARBOR, NAVY HALE KEIKI (BLDG 364 - 368 & 407) - OVERALL FACILITY MAP	

