



**DEPARTMENT OF THE NAVY**  
**JOINT BASE PEARL HARBOR-HICKAM**  
**850 TICONDEROGA ST STE 100**  
**PEARL HARBOR HI 96860-5102**

5090  
Ser JB4/1041  
28 Sep 2020

**From:** Commander, Joint Base Pearl Harbor-Hickam  
**To:** Staff and Patrons of Joint Base Pearl Harbor-Hickam Peltier Child Development Center  
(Buildings 1923, 1924, 1928)

**Subj:** SAMPLING AND TESTING FOR LEAD IN DRINKING WATER AT PELTIER CHILD DEVELOPMENT CENTER

**Ref:** (a) OPNAVINST 5090.1E, Environmental Readiness Program

**Encl:** (1) Overview of Testing Results and Corrective Actions for Peltier CDC (Buildings 1923, 1924, 1928)

1. I am pleased to report that all water intended for consumption at this Child Development Center (CDC) has tested below the Environmental Protection Agency's (EPA's) lead screening level of 15 parts per billion (ppb). Initial results identified that four outlets at Peltier CDC did not meet EPA's lead screening level. Shortly after receiving the initial results, we took those four outlets out of service and performed corrective actions. Follow-up sampling identified that the four outlets at Peltier CDC are now compliant with EPA's lead screening level and no further action is required. Enclosure 1 of this letter provides a summary of all sampling results for the entire facility.

2. These tests are conducted every 5 years, and samples are taken from all sources water used for drinking, cooking, or washing at all Youth Centers (YCs) and CDCs. Our latest tests were conducted in December 2019.

3. Per reference (a), we have adopted the EPA's recommendation that we test the lead content of drinking water in priority areas such as YCs and CDCs as policy and made this a top priority. Our environmental personnel conducted this testing following Navy and EPA guidelines, and samples were sent to a state-certified or accredited laboratory for analysis.

4. My team and I will continue to monitor and test water quality at all of our YCs and CDCs to ensure our water is safe to drink and use. I remain committed to the safety and health of all personnel and family members using our facilities and will keep you updated as necessary.

5. If you have questions regarding the sampling program, please contact our Installation Environmental Program Director at (808) 474-0392 or [steven.christiansen@navy.mil](mailto:steven.christiansen@navy.mil).

R. E. HARMEYER  
CAPT, CEC, U.S. Navy  
By direction

Copy:  
CNIC N45  
CNRH N45  
NAVFAC HI EV, EV1, PRJ4

**Overview of Testing Results and Corrective Actions for Peltier CDC  
(Buildings 1923, 1924 and 1928)**

At the Peltier CDC, outlets used for drinking, cooking, and washing were tested. Out of 114 samples collected, four water outlets initially tested above the screening level of 15 parts per billion (ppb) for lead in drinking water in schools and childcare centers.

The first sampling event took place on November 23, 2019. We received the test results on December 12, 2019 which included four exceedances. We took those outlets out of service shortly after and conducted follow up sampling on December 18, 2019 to verify the results. Summary table of the results from the first and follow-up samples for the four outlets:

Outlet ID#	Outlet Description	First Sample (ppb)	Follow-up Sample (ppb)		Comments and Corrective Actions
			First Draw	Flush	
14	Adult Sink (bldg. 1923)	17	9	0.97	Most likely source of lead was from infrequent use of the sink. Water should be run for 30 sec in the morning.
3	Adult Sink (bldg. 1924)	15	2.1	Not Detected	Most likely source of lead was from infrequent use of the sink. Water should be run for 30 sec in the morning.
114	Hose Bib (Exterior Bldg 1928)	56	12	1.7	Most likely source of lead was from infrequent use of the outlet. Water should be run for 30 sec in the morning.
115	Hose Bib (Exterior Bldg 1928)	350	12	10	Most likely source of lead was from infrequent use of the outlet. Water should be run for 30 sec in the morning.

A complete summary results table (enclosure 2) is enclosed for your information. The *Building #* and *Room #* indicate the location of the fixture. The *Outlet Map #* corresponds to the location indicated on the floor plan of the CDC (enclosure 3). The *Category* column gives information about whether the outlet is used for drinking water (water fountain), cooking (food preparation), or washing (primarily hand-washing or brushing teeth). The *Outlet Description* column contains additional information to describe the outlet. The next set of columns provide *Initial Lead Results*, and for those locations that exceeded the recommended screening level of 15 ppb the *Follow-up Lead Results*.

EPA sampling protocol requires water to not be used for between 8 and 18 hours prior to first draw sampling. Therefore, *Initial Lead Results* were from first draw samples collected early in the morning before the CDC opened and before any water was used. The *Initial Lead Results* also indicate whether resampling is required.

The *Follow-up Lead Results* includes columns for *First Draw* and *Flush* samples, which help determine the source of lead:

- If the lead concentration of 30 second flush sample resulted in lower than 15 ppb lead, the aerators were the source of lead and the outlet can be used for drinking if the aerators are cleaned on a regular basis.
- If the lead concentration of the resampled first draw (but not the follow up 30 second flush) was greater than 15 ppb, the fixture was the source of lead. These fixtures can be used if water is flushed for 30 seconds before first use of the day or if the fixtures are replaced and retesting confirms that the new fixtures do not leach lead.
- If the lead concentration of the sample following the 30 second flush was greater than 15 ppb and greater than the lead concentration of the first draw resample, the source of lead is the plumbing upstream of the outlet. These outlets should be disconnected unless upstream plumbing is replaced.

The *Comments* column indicates additional information regarding the fixture and actions to remediate the source of lead if detected.

**LIPA Test Results**  
**JBPHH - Peltier CDC (Building # 1923, 1924, & 1928)**

Initial Sample Date: 11/23/19, Results Date: 12/12/19  
 Follow-up Sample Date: 12/18/19, Results Date: 01/08/20

Building #	Room #	Outlet Map #	Category	Outlet Description	Initial Lead Results (ppb)	Follow-up Lead Results (ppb)		Comments
						First Draw	Flush	
1923	103	14	Washing	Adult Sink	17	9	0.97	Most likely source of lead was from infrequent use of the sink. Water should be run for 30 sec in the morning
1923	103	15	Washing	Adult Sink	6.4	Not Sampled	Not Sampled	
1923	103	16	Washing	Toddler Sink - Sensor	7.9	Not Sampled	Not Sampled	
1923	104	17	Washing	Adult Sink	Not Detected	Not Sampled	Not Sampled	
1923	104	18	Washing	Adult Sink	Not Detected	Not Sampled	Not Sampled	
1923	104	19	Washing	Toddler Sink - Sensor	9.9	Not Sampled	Not Sampled	Not regularly used
1923	105	20	Washing	Adult Sink	Not Detected	Not Sampled	Not Sampled	
1923	105	21	Washing	Adult Sink	Not Detected	Not Sampled	Not Sampled	
1923	105	22	Washing	Toddler Sink - Sensor	8.2	Not Sampled	Not Sampled	Not regularly used
1923	106	23	Washing	Adult Sink	Not Detected	Not Sampled	Not Sampled	
1923	106	24	Washing	Adult Sink	Not Detected	Not Sampled	Not Sampled	
1923	106	24A	Washing	Adult Sink - Sprayer	Not Detected	Not Sampled	Not Sampled	
1923	106	25	Washing	Toddler Sink - Sensor	1	Not Sampled	Not Sampled	
1923	107	26	Washing	Adult Sink	Not Detected	Not Sampled	Not Sampled	
1923	107	28	Washing	Toddler Sink - Sensor	1.6	Not Sampled	Not Sampled	
1923	107	53	Washing	Adult Sink	Not Detected	Not Sampled	Not Sampled	Used for teeth brushing
1923	108	29	Washing	Adult Sink	Not Detected	Not Sampled	Not Sampled	
1923	108	30	Washing	Toddler Combination Sink - Faucet	Not Detected	Not Sampled	Not Sampled	
1923	108	31	Washing	Toddler Sink - Sensor	Not Detected	Not Sampled	Not Sampled	
1923	108	32	Washing	Toddler Sink	Not Detected	Not Sampled	Not Sampled	
1923	108	54	Drinking	Toddler Combination Sink - Water Fountain	Not Detected	Not Sampled	Not Sampled	
1923	108	61	Washing	Adult Sink	Not Detected	Not Sampled	Not Sampled	Used for teeth brushing
1923	109	33	Washing	Adult Sink	4.5	Not Sampled	Not Sampled	
1923	109	34	Washing	Adult Sink	Not Detected	Not Sampled	Not Sampled	Used for teeth brushing
1923	109	35	Washing	Toddler Sink - Sensor	1.3	Not Sampled	Not Sampled	
1923	109	36	Washing	Toddler Sink - Sensor	1.4	Not Sampled	Not Sampled	
1923	109	55	Washing	Toddler Combination Sink - Faucet	Not Detected	Not Sampled	Not Sampled	
1923	109	56	Drinking	Toddler Combination Sink - Water Fountain	Not Detected	Not Sampled	Not Sampled	
1923	110	37	Drinking	Toddler Combination Sink - Water Fountain	2.2	Not Sampled	Not Sampled	

Building #	Room #	Outlet Map #	Category	Outlet Description	Initial Lead Results (ppb)	Follow-up Lead Results (ppb)		Comments
						First Draw	Flush	
1923	110	38	Washing	Toddler Combination Sink - Faucet	12	Not Sampled	Not Sampled	
1923	110	39	Washing	Adult Sink	Not Detected	Not Sampled	Not Sampled	
1923	110	40	Washing	Adult Sink	11	Not Sampled	Not Sampled	
1923	110	41	Washing	Toddler Sink - Sensor	5.5	Not Sampled	Not Sampled	
1923	110	42	Washing	Toddler Sink - Sensor	11	Not Sampled	Not Sampled	
1923	111	43	Washing	Toddler Combination Sink - Faucet	Not Detected	Not Sampled	Not Sampled	
1923	111	44	Drinking	Toddler Combination Sink - Water Fountain	Not Detected	Not Sampled	Not Sampled	
1923	111	45	Washing	Adult Sink	Not Detected	Not Sampled	Not Sampled	
1923	111	46	Washing	Toddler Sink - Sensor	Not Detected	Not Sampled	Not Sampled	
1923	111	47	Washing	Toddler Sink - Sensor	Not Detected	Not Sampled	Not Sampled	
1923	112	48	Drinking	Toddler Combination Sink - Water Fountain	Not Detected	Not Sampled	Not Sampled	
1923	112	49	Washing	Toddler Combination Sink - Faucet	1.7	Not Sampled	Not Sampled	
1923	112	50	Washing	Adult Sink	3.3	Not Sampled	Not Sampled	
1923	112	51	Washing	Toddler Sink - Sensor	Not Detected	Not Sampled	Not Sampled	
1923	112	52	Washing	Toddler Sink - Sensor	1	Not Sampled	Not Sampled	
1923	Exterior	58	Washing	Hose Bib	3.3	Not Sampled	Not Sampled	
1923	Exterior	59	Washing	Hose Bib	0.92	Not Sampled	Not Sampled	
1923	Exterior	HB-8	Washing	Hose Bib	Not Sampled	Not Sampled	Not Sampled	Fixture broken
1924	Kitchen	9	Cooking	Kitchen Sink	10	Not Sampled	Not Sampled	
1924	Kitchen	10	Cooking	Kitchen Sink	Not Detected	Not Sampled	Not Sampled	
1924	Kitchen	11	Cooking	Kitchen Sink	Not Detected	Not Sampled	Not Sampled	
1924	Kitchen	57	Drinking	Ice Machine	Not Detected	Not Sampled	Not Sampled	
1924	Mens Bathroom	2	Washing	Adult Sink	Not Detected	Not Sampled	Not Sampled	
1924	Mens Bathroom	3	Washing	Adult Sink	15	2.1	Not Detected	Most likely source of lead was from infrequent use of the sink. Water should be run for 30 sec in the morning
1924	Staff Kitchen	4	Cooking	Kitchen Sink	0.52	Not Sampled	Not Sampled	
1924	Womens Locker Room	5	Washing	Adult Sink	0.56	Not Sampled	Not Sampled	
1924	Womens Locker Room	6	Washing	Adult Sink	0.8	Not Sampled	Not Sampled	
1924	Womens Locker Room	7	Washing	Adult Sink	Not Detected	Not Sampled	Not Sampled	
1924	Utility	8	Washing	Utility Sink	9.4	Not Sampled	Not Sampled	
1928	15	65	Washing	Adult Sink	Not Detected	Not Sampled	Not Sampled	
1928	15	66	Washing	Toddler Combination Sink - Faucet	0.7	Not Sampled	Not Sampled	
1928	15	67	Drinking	Toddler Combination Sink - Water Fountain	Not Detected	Not Sampled	Not Sampled	
1928	15	68	Washing	Toddler Sink - Sensor	Not Detected	Not Sampled	Not Sampled	
1928	15	69	Washing	Toddler Sink - Sensor	Not Detected	Not Sampled	Not Sampled	

(EPA Limit is 15 ppb)

Building #	Room #	Outlet Map #	Category	Outlet Description	Initial Lead Results (ppb)	Follow-up Lead Results (ppb)		Comments
						First Draw	Flush	
1928	15	70	Washing	Adult Sink	Not Detected	Not Sampled	Not Sampled	
1928	16	109	Washing	Adult Sink	2.8	Not Sampled	Not Sampled	
1928	16	110	Washing	Toddler Sink - Sensor	Not Detected	Not Sampled	Not Sampled	Not regularly used
1928	16	111	Washing	Adult Sink - Sensor	Not Detected	Not Sampled	Not Sampled	
1928	17	71	Washing	Adult Sink	0.53	Not Sampled	Not Sampled	
1928	17	72	Washing	Toddler Combination Sink - Faucet	Not Detected	Not Sampled	Not Sampled	Used for teeth brushing
1928	17	73	Drinking	Toddler Combination Sink - Water Fountain	Not Detected	Not Sampled	Not Sampled	
1928	17	74	Washing	Toddler Sink - Sensor	Not Detected	Not Sampled	Not Sampled	
1928	17	75	Washing	Toddler Sink - Sensor	Not Detected	Not Sampled	Not Sampled	
1928	17	76	Washing	Adult Sink - Sensor	Not Detected	Not Sampled	Not Sampled	
1928	18	106	Washing	Adult Sink	Not Detected	Not Sampled	Not Sampled	
1928	18	107	Washing	Toddler Sink	0.68	Not Sampled	Not Sampled	Not regularly used
1928	18	108	Washing	Adult Sink - Sensor	Not Detected	Not Sampled	Not Sampled	
1928	19	77	Washing	Adult Sink	Not Detected	Not Sampled	Not Sampled	
1928	19	78	Drinking	Toddler Combination Sink - Water Fountain	Not Detected	Not Sampled	Not Sampled	
1928	19	79	Washing	Toddler Combination Sink - Faucet	Not Detected	Not Sampled	Not Sampled	Used for teeth brushing
1928	19	80	Washing	Toddler Sink - Sensor	Not Detected	Not Sampled	Not Sampled	
1928	19	81	Washing	Toddler Sink - Sensor	Not Detected	Not Sampled	Not Sampled	
1928	19	82	Washing	Adult Sink	0.85	Not Sampled	Not Sampled	
1928	21	83	Washing	Adult Sink	Not Detected	Not Sampled	Not Sampled	
1928	21	84	Drinking	Toddler Combination Sink - Water Fountain	Not Detected	Not Sampled	Not Sampled	
1928	21	85	Washing	Toddler Combination Sink - Faucet	Not Detected	Not Sampled	Not Sampled	Used for teeth brushing
1928	21	86	Washing	Toddler Sink - Sensor	Not Sampled	Not Sampled	Not Sampled	Fixture broken
1928	21	87	Washing	Toddler Sink - Sensor	Not Detected	Not Sampled	Not Sampled	
1928	21	88	Washing	Adult Sink - Sensor	Not Detected	Not Sampled	Not Sampled	
1928	22	103	Washing	Adult Sink	Not Detected	Not Sampled	Not Sampled	Used for teeth brushing
1928	22	104	Washing	Toddler Sink - Sensor	0.54	Not Sampled	Not Sampled	
1928	22	105	Washing	Adult Sink	0.71	Not Sampled	Not Sampled	
1928	24	100	Washing	Adult Sink	Not Detected	Not Sampled	Not Sampled	Used for teeth brushing
1928	24	101	Washing	Toddler Sink - Sensor	0.67	Not Sampled	Not Sampled	
1928	24	102	Washing	Adult Sink	Not Detected	Not Sampled	Not Sampled	
1928	26	97	Washing	Adult Sink	Not Detected	Not Sampled	Not Sampled	Used for teeth brushing
1928	26	98	Washing	Toddler Sink - Sensor	Not Detected	Not Sampled	Not Sampled	
1928	26	99	Washing	Adult Sink - Sensor	Not Detected	Not Sampled	Not Sampled	
1928	Bathroom	62	Washing	Adult Sink	Not Detected	Not Sampled	Not Sampled	
1928	Bathroom	96	Washing	Adult Sink	Not Detected	Not Sampled	Not Sampled	
1928	Bathroom	112	Washing	Adult Sink	Not Detected	Not Sampled	Not Sampled	

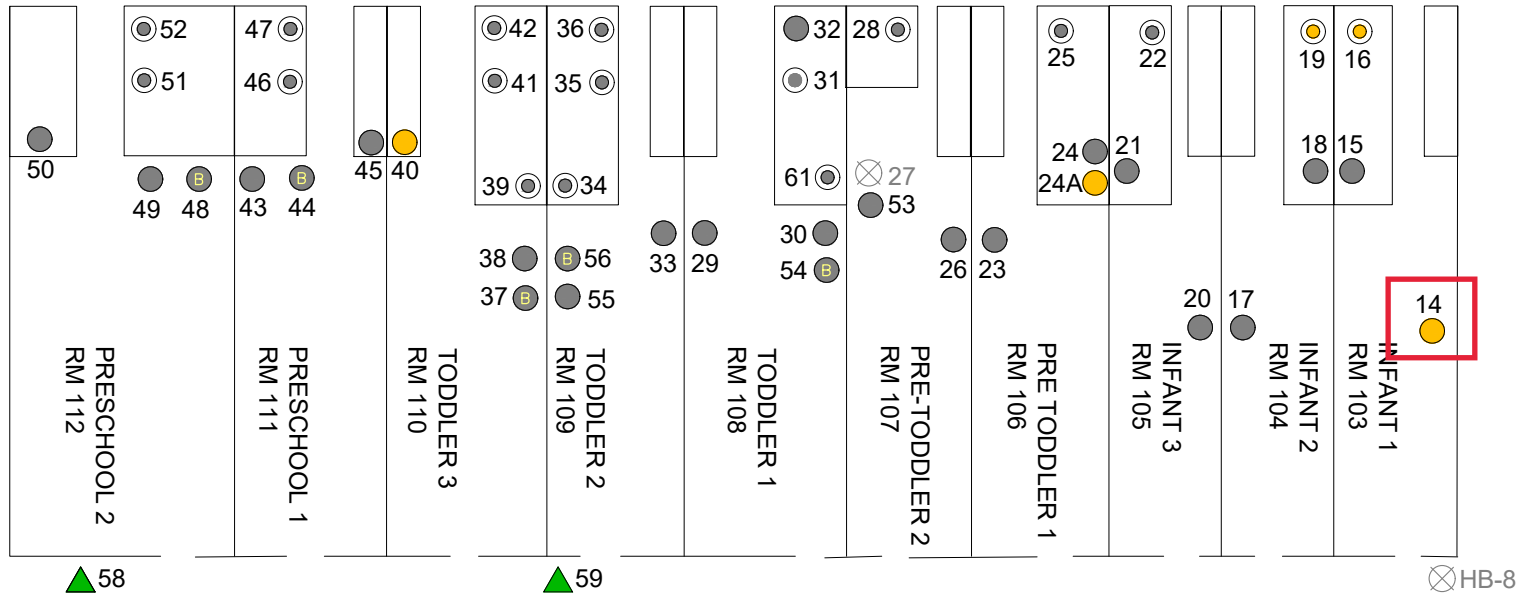
(EPA Limit is 15 ppb)

Building #	Room #	Outlet Map #	Category	Outlet Description	Initial Lead Results (ppb)	Follow-up Lead Results (ppb)		Comments
						First Draw	Flush	
1928	Exterior	113	Washing	Hose Bib	7.7	Not Sampled	Not Sampled	Used for waterplay
1928	Exterior	114	Washing	Hose Bib	56	12	1.7	Most likely source of lead was from infrequent use of the sink. Water should be run for 30 sec in the morning
1928	Exterior	115	Washing	Hose Bib	350	12	10	Most likely source of lead was from infrequent use of the sink. Water should be run for 30 sec in the morning
1928	Hallway	63	Drinking	Water Fountain - Cooler	Not Detected	Not Sampled	Not Sampled	
1928	Hallway	64	Drinking	Water Fountain - Cooler	Not Detected	Not Sampled	Not Sampled	
1928	Kitchen	89	Washing	Adult Sink	Not Detected	Not Sampled	Not Sampled	
1928	Kitchen	90	Cooking	Kitchen Sink	Not Detected	Not Sampled	Not Sampled	
1928	Kitchen	91	Cooking	Kitchen Sink	Not Detected	Not Sampled	Not Sampled	
1928	Kitchen	92	Washing	Adult Sink	Not Detected	Not Sampled	Not Sampled	
1928	Kitchen	93	Cooking	Kitchen Sink	Not Detected	Not Sampled	Not Sampled	
1928	Kitchen	94	Cooking	Kitchen Sink	Not Detected	Not Sampled	Not Sampled	
1928	Kitchen	95	Cooking	Kitchen Sink	Not Detected	Not Sampled	Not Sampled	
1928	Teachers Lounge	61	Cooking	Kitchen Sink	Not Detected	Not Sampled	Not Sampled	
1928	Teachers Lounge	61A	Cooking	Kitchen Sink - Sprayer	0.58	Not Sampled	Not Sampled	
1923	107	27	Washing	Adult Sink - Sensor	Not Sampled	Not Sampled	Not Sampled	Fixture Removed
1928	Custodian Room	US-2	Washing	Utility Sink	Not Sampled	Not Sampled	Not Sampled	Cleaning only
1924	Exterior	HB-1	Watering	Hose Bib	Not Sampled	Not Sampled	Not Sampled	Landscaping only
1924	Exterior	HB-2	Watering	Hose Bib	Not Sampled	Not Sampled	Not Sampled	Landscaping only
1924	Exterior	HB-3	Watering	Hose Bib	Not Sampled	Not Sampled	Not Sampled	Landscaping only
1924	Exterior	HB-4	Watering	Hose Bib	Not Sampled	Not Sampled	Not Sampled	Landscaping only
1924	Exterior	HB-5	Watering	Hose Bib	Not Sampled	Not Sampled	Not Sampled	Landscaping only
1928	Exterior	HB-6	Watering	Hose Bib	Not Sampled	Not Sampled	Not Sampled	Landscaping only
1928	Exterior	HB-7	Watering	Hose Bib	Not Sampled	Not Sampled	Not Sampled	Landscaping only
1928	Laundry Room	US-1	Washing	Utility Sink	Not Sampled	Not Sampled	Not Sampled	Cleaning only
1924	Mens Locker	12	Washing	Adult Sink	Not Sampled	Not Sampled	Not Sampled	Fixture Removed
1924	Mens Locker	13	Washing	Adult Sink	Not Sampled	Not Sampled	Not Sampled	Fixture Removed

(EPA Limit is 15 ppb)

TRUE NORTH  
NOT TO SCALE

BLDG 1928  
(SEE FIGURE 14-D)



PLAYGROUND

BLDG 1924  
(SEE FIGURE 14-C)

**NOTE**

\*SAMPLE LOCATIONS SHOWN IN GREY HAVE BEEN SAMPLED BY NAVFAC HI IN 2019 AND WILL NOT BE RESAMPLED FOR THIS PROJECT.

\*\*DRINKING FOUNTAIN BUBBLERS SAMPLED BY NAVFAC IN 2019 ARE DENOTED WITH A "B".

**LEGEND**

- SINK FAUCET\*
- SINK FAUCET (SENSOR TYPE)\*
- DRINKING FOUNTAIN (BUBBLER)\*\*
- HOSE BIB
- WATER OUTLET (FIXTURE REMOVED)

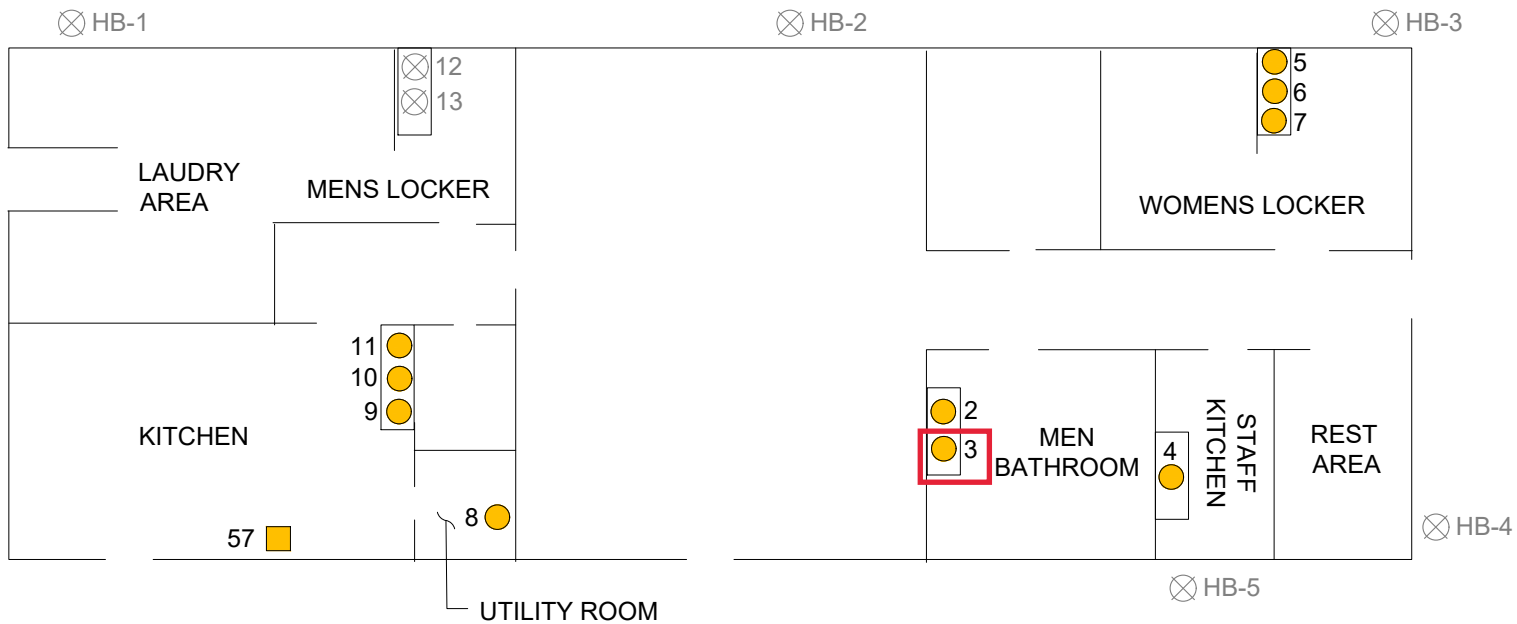
Enclosure (3)

	DATE: DEC 2019	PROJECT TITLE: LEAD IN DRINKING WATER TESTING AT PRIORITY AREAS AT JBPHH AND NCTAMS, PACIFIC
	FIGURE TITLE: PEARL HARBOR, PELTIER CDC (BLDG 1923, 1924 & 1928) - BLDG 1923 SAMPLE LOCATIONS	
		FIGURE NO.: 14-B



TRUE NORTH  
NOT TO SCALE

2



← BLDG 1923  
(SEE FIGURE 14-B)

PLAYGROUND

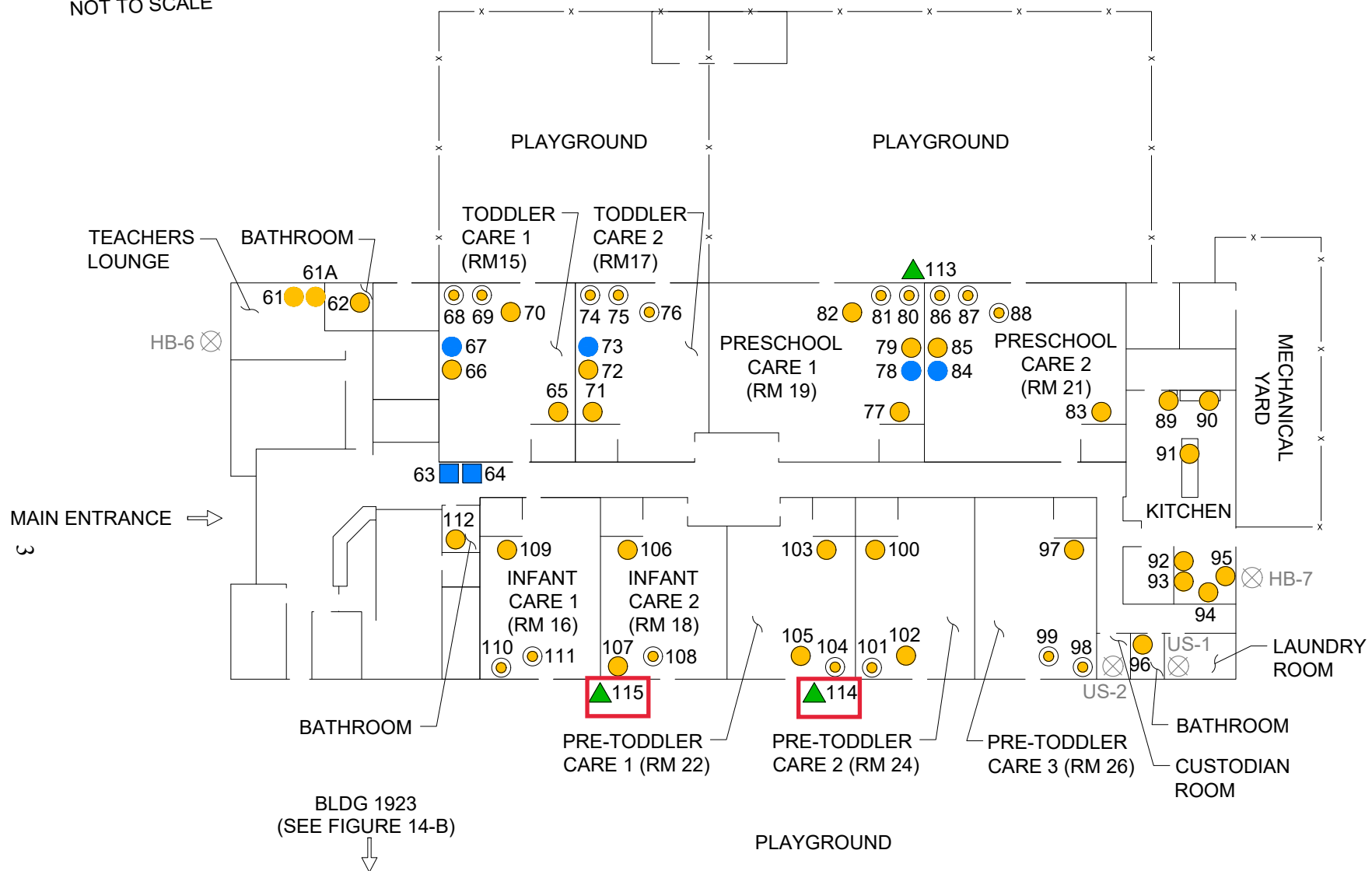
BLDG 1925  
(NOT INCLUDED IN SURVEY) →

**LEGEND**

- SINK FAUCET
  - ICE MACHINE
  - ⊗ WATER OUTLET  
(FIXTURE REMOVED OR  
NON-CONSUMABLE USE)
- Enclosure (3)

	DATE: DEC 2019	PROJECT TITLE: LEAD IN DRINKING WATER TESTING AT PRIORITY AREAS AT JBPHH AND NCTAMS, PACIFIC
	FIGURE TITLE: PEARL HARBOR, PELTIER CDC (BLDG 1923, 1924 & 1928) - BLDG 1924 SAMPLE LOCATIONS	
		FIGURE NO.: <b>14-C</b>

TRUE NORTH  
NOT TO SCALE



**LEGEND**

- SINK FAUCET
- ⊙ SINK FAUCET (SENSOR TYPE)
- DRINKING FOUNTAIN (BUBBLER)
- DRINKING FOUNTAIN (COOLER)
- ▲ HOSE BIB
- ⊗ WATER OUTLET (NON-CONSUMABLE USE)

	DATE: DEC 2019	PROJECT TITLE: LEAD IN DRINKING WATER TESTING AT PRIORITY AREAS AT JBPHH AND NCTAMS, PACIFIC
	FIGURE TITLE: PEARL HARBOR, PELTIER CDC (BLDG 1923, 1924 & 1928) - BLDG 1928 SAMPLE LOCATIONS	

Enclosure (3)