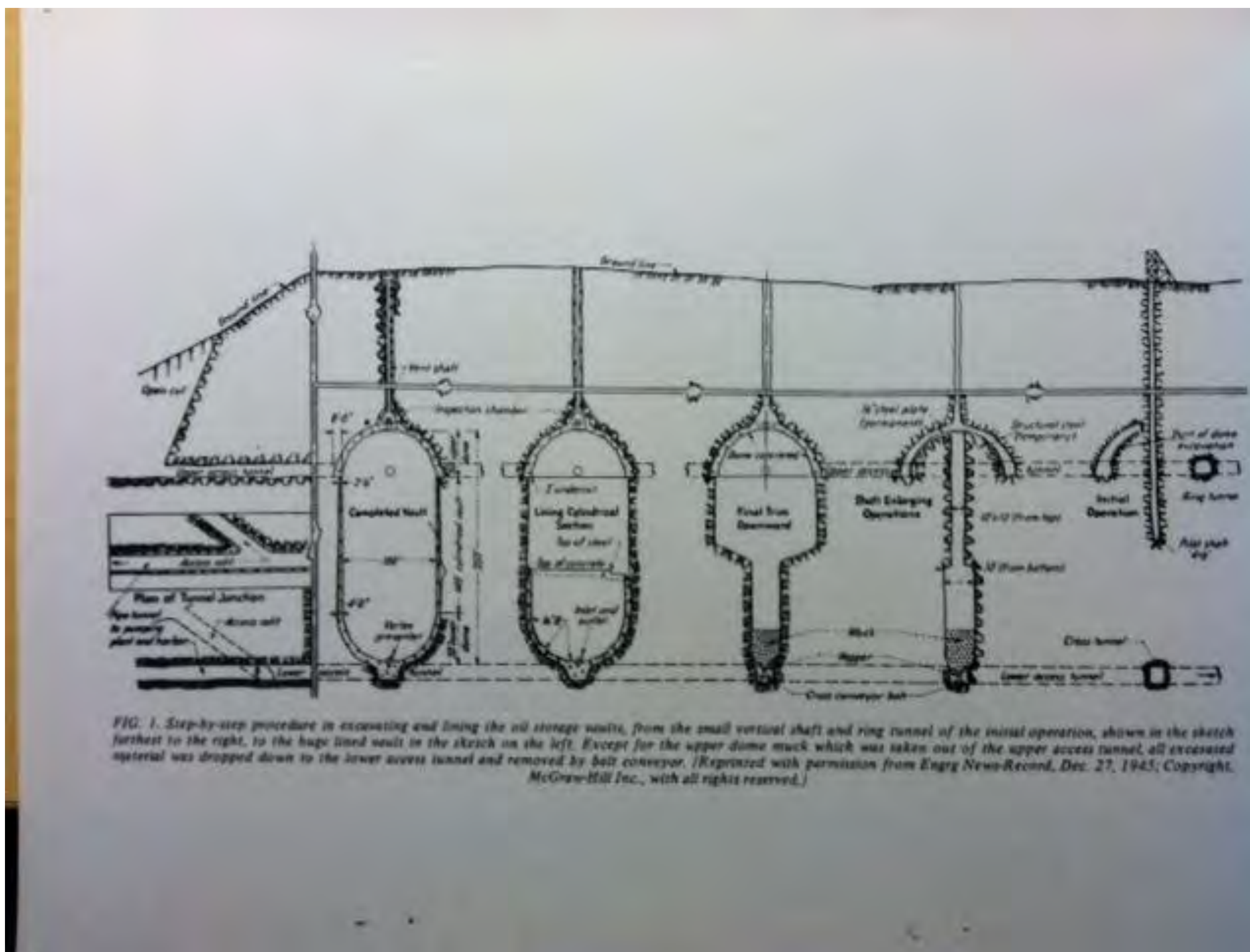
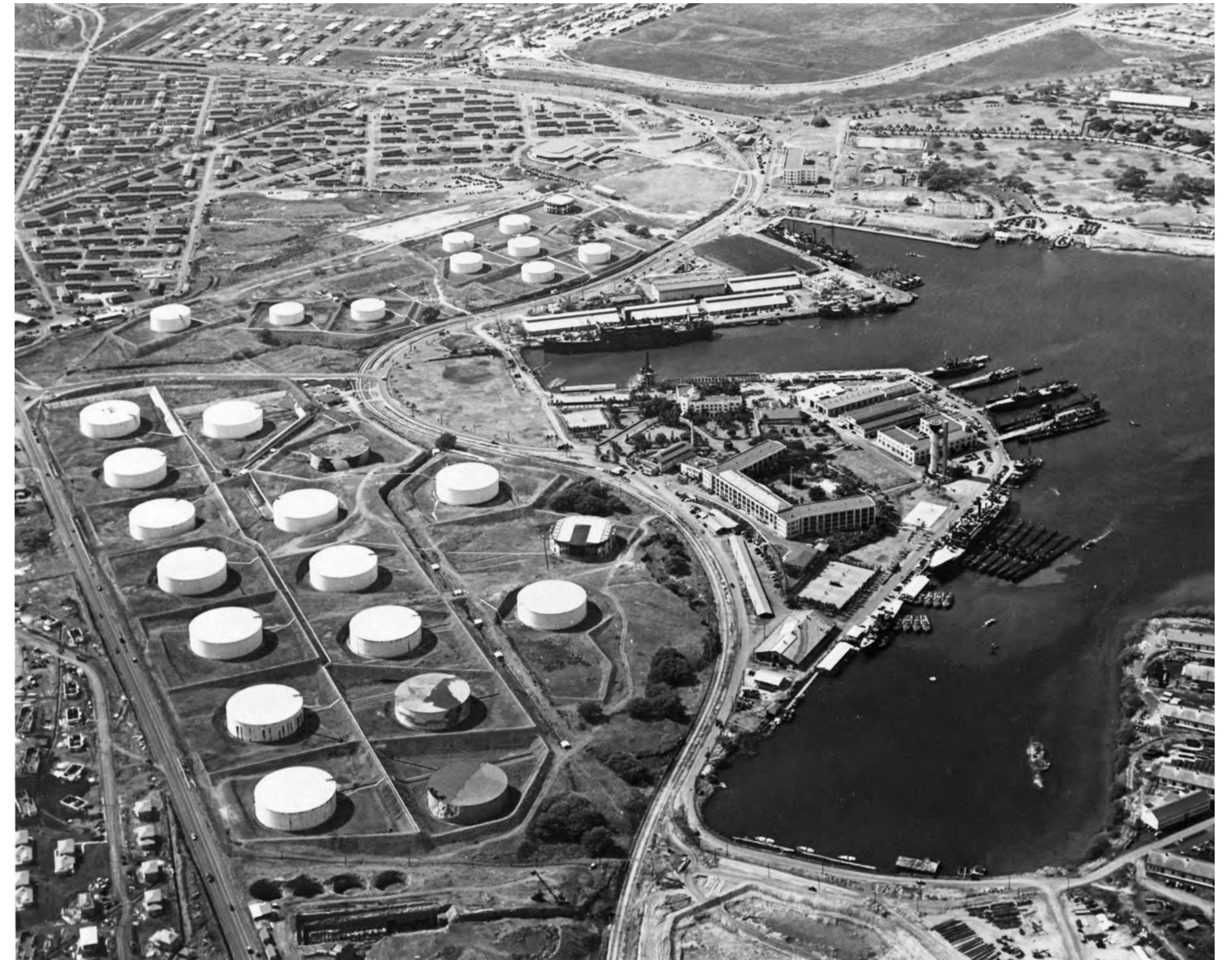


# Concept of Red Hill

**Safe guard fuel for our military, state government, & emergency services by placing the fuel tanks underground & up-hill from Pearl Harbor**

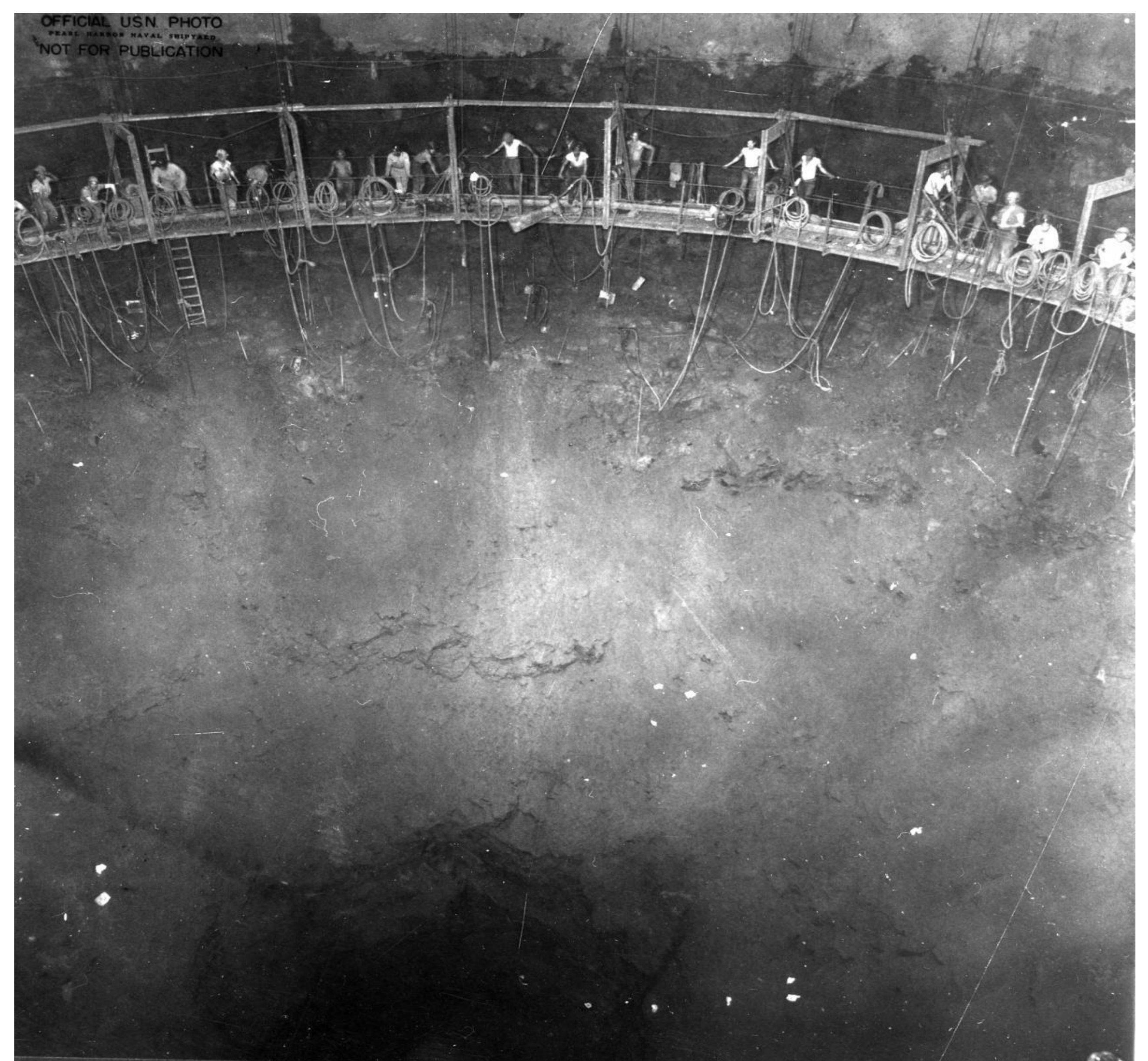


**Tanks would be safe from bombs – bullets – sabotage & can operate without electricity**



# Turning the Concept of Red Hill into a Reality

## *An Engineering Marvel Built to Last*

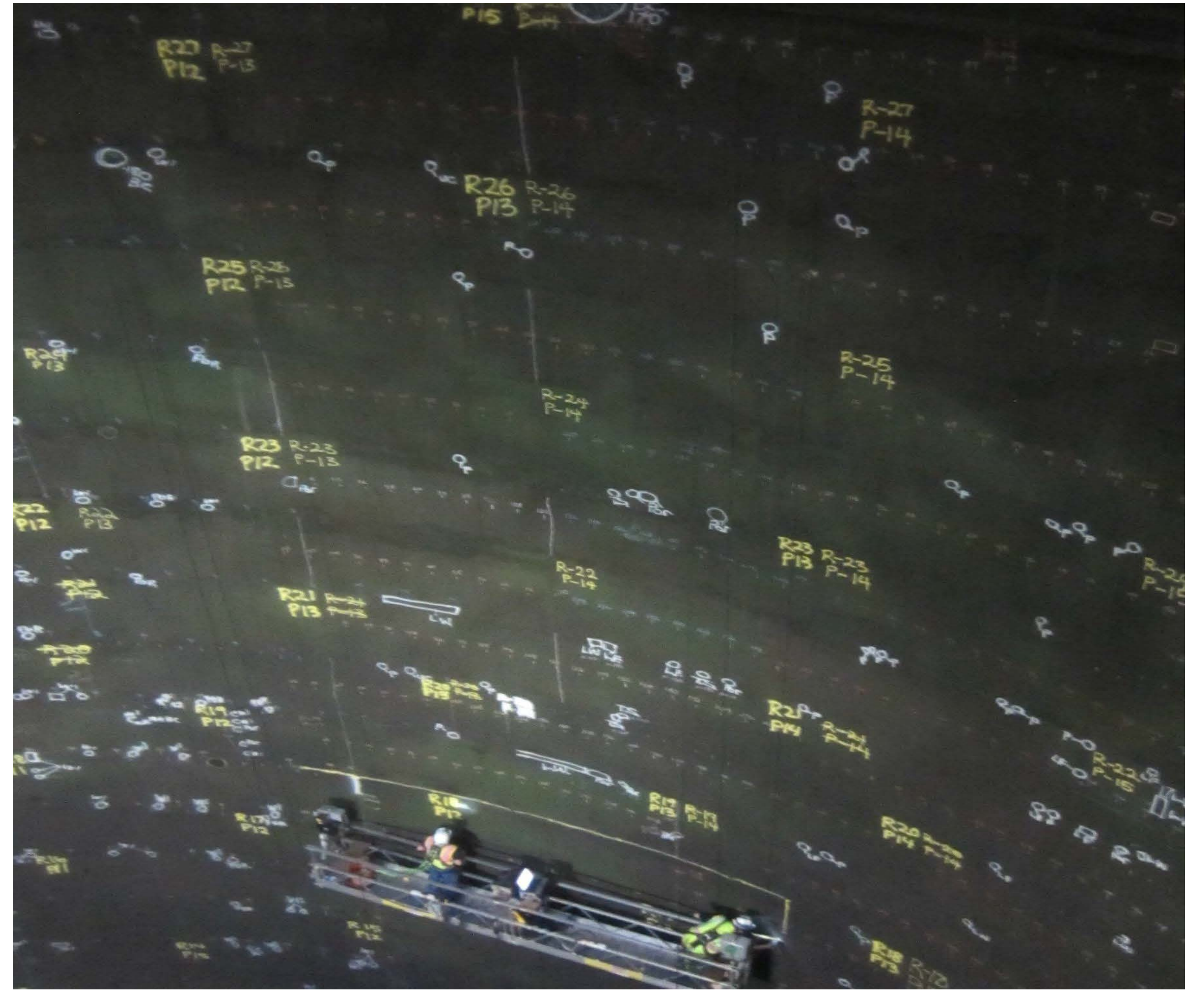


***Tunnels & Tank Vaults were dug out of the basalt rock – The rock surface was sprayed with gunite and a 20-foot concrete foundation was poured. As the steel tank liner was erected, the space between the steel and rock was filled with 2-4 feet of reinforced concrete***



# Red Hill – A Modernized & Secured Fuel Facility

*Over \$250 million dollars invested in upgrades and modernization in the past 10 years*



*Red Hill is continually maintained and has had numerous modernization upgrades; installing the latest technology, equipment, and practices*



# NATIONAL HISTORIC ENGINEERING LANDMARK

*Transparent - Facility Tours– Public Meetings – Open House – Kukakua Sessions*

## *Public Information Available:*

### EPA:

[www.epa.gov/red-hill](http://www.epa.gov/red-hill)

### USN (CNIC):

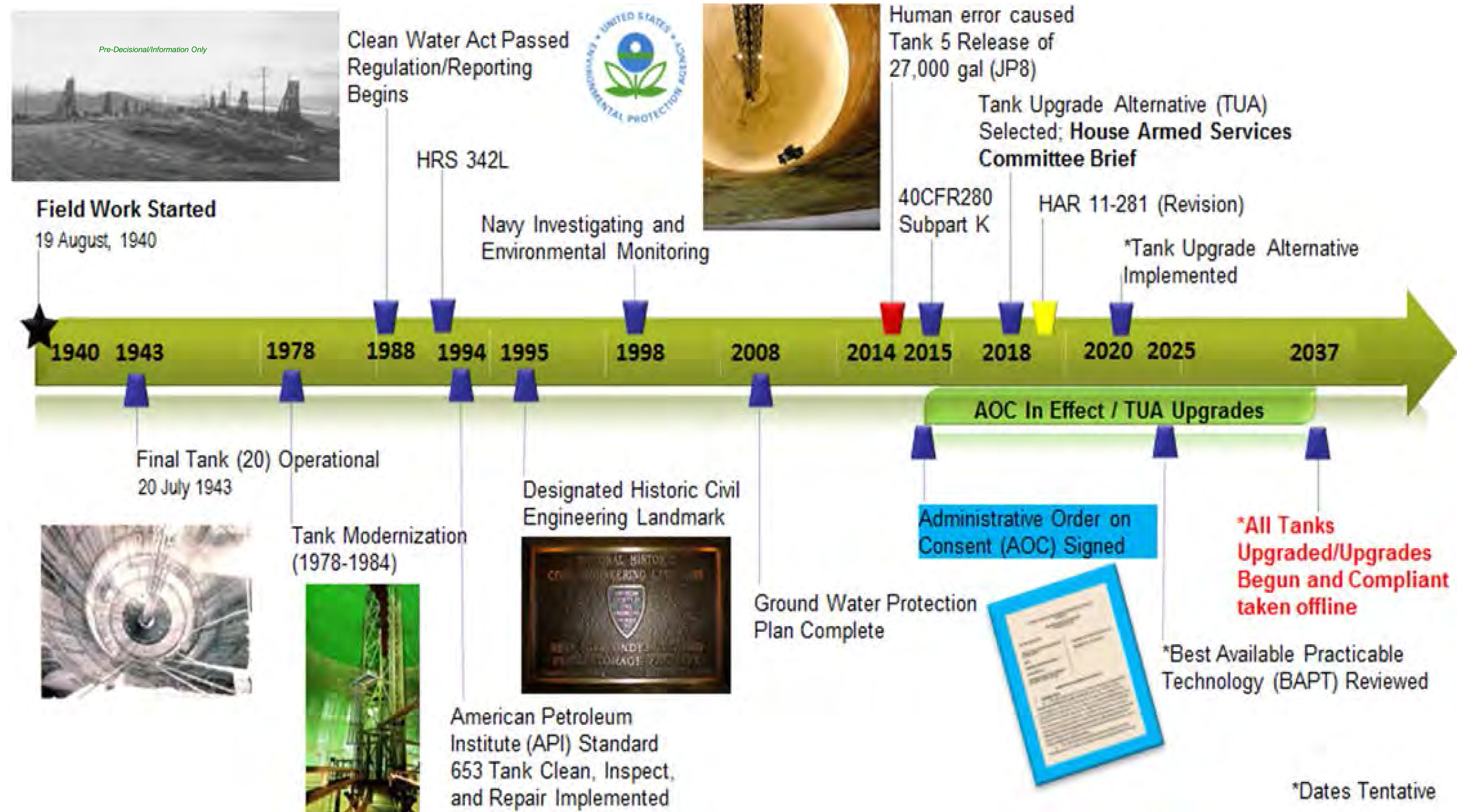
[www.cnic.navy.mil/regions/cnrh/om/environmental/red-hill-tank.html](http://www.cnic.navy.mil/regions/cnrh/om/environmental/red-hill-tank.html)



*Red Hill is a modern, secure, and historic facility  
Our drinking water is clean & safe – Navy intends to keep it that way*



# History



# Current Red Hill Requirements

