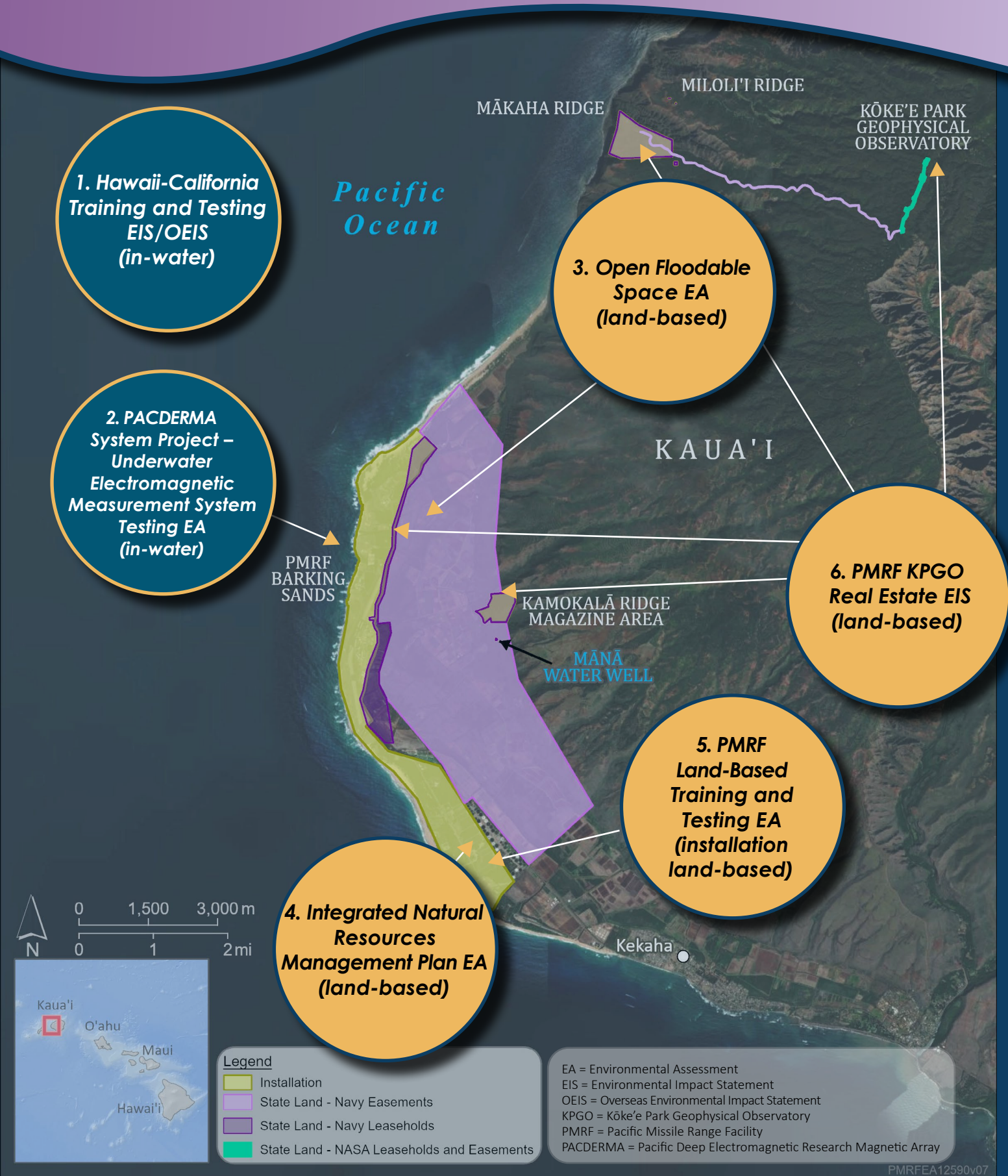


Ongoing Environmental Reviews at Pacific Missile Range Facility Barking Sands



PROJECT DESCRIPTIONS

In-Water Projects

1. Hawaii-California Training and Testing EIS/OEIS (U.S. Pacific Fleet)

The Navy proposes to conduct at-sea military readiness activities within the Study Area and to modernize and sustain Navy ranges necessary to support training and testing activities. This action is needed to ensure U.S. military services are able to organize, train, and equip service members and personnel to meet their national defense missions.

Projected Schedule:

- Scoping Phase: December 2023 - January 2024 (completed)
- Draft EIS/OEIS Public Review and Comment: December 2024 - February 2025 (completed)
- Decision Document: December 2025

2. PACDERMA System Project – Underwater Electromagnetic Measurement System Testing EA (NAVSEA)

The Navy proposes to construct underwater electromagnetic measurement system to characterize a submarine's submerged electric signature.

Projected Schedule:

- Draft EA Public Review and Comment: August 2025
- Decision Document: October 2025



Land-Based Projects

3. Open Floodable Space EA

The proposed action is to manage a 200-acre open floodable space adjacent to interior northern portion of PMRF Barking Sands to manage and mitigate sea level rise encroachment on installation grounds and surrounding agricultural lands. The open space would include an additional 200-acre buffer to provide suitable habitat for native plants and animals.

4. Integrated Natural Resources Management Plan EA (Navy Region Hawaii)

The Navy proposes to implement the 2023 INRMP, which provides management recommendations to protect species, land, waterways, wetlands, and floodplains.

Projected Schedule:

- Draft EA Public Review and Comment: May - June 2024 (completed)
- Decision Document: March 2025 (completed)

5. PMRF Land-Based Training and Testing EA (U.S. Pacific Fleet)

The Navy proposes to conduct ongoing and proposed military readiness land-based training and testing activities at PMRF launch areas and other locations. This action is needed to 1) ensure U.S. military services are able to organize, train, and equip service members and personnel to meet their respective national defense missions; 2) update NEPA compliance for ongoing land-based training and testing activities; and 3) provide additional coverage for other military services' activities at PMRF.

Projected Schedule:

- Draft EA Public Review and Comment: August - September 2024 (completed)
- Decision Document: Fall 2025

6. PMRF KPGO Real Estate EIS (Navy, NASA)

The Navy proposes to maintain long-term (more than 25 years) Department of Defense use of 8,172 acres (684 acres of leasehold; 7,488 acres of easement lands - approximately 95% of the easement lands are passively used for encroachment buffers and mission readiness and the remaining 5% of easement lands are used for access and utilities easements) of State of Hawai'i lands on Kaua'i for operational continuity and sustainment of the military readiness mission. NASA proposes to maintain long-term (more than 25 years) use of 23 acres (16 acres of leasehold; 7 acres of easement lands) of State of Hawai'i lands for continued operation of KPGO.

The Proposed Action is needed because the existing real estate agreements for these lands expire between 2027 and 2030. Navy use of these state lands is required to maintain technological and safety capabilities supporting PMRF training and testing. Navy training and testing operations do not occur on these state lands. The environmental effects of these training and testing operations are fully analyzed in previous, focused environmental documents referenced in the EIS. For NASA, these state lands are critical to maintain data collection efforts of global significance.

Projected Schedule:

- Scoping Phase: May - June 2024 (completed)
- Draft EIS Public Review and Comment: June - August 2025
- Decision Document: May 2026



E Pane Mai Ka Nonoi O Nohili *Answering the Requests of Nohili*

ACRONYMS

EA = Environmental Assessment
EIS = Environmental Impact Statement
KPGO = Kōke'e Park Geophysical Observatory
NASA = National Aeronautics and Space Administration

NAVSEA = Naval Sea Systems Command
NEPA = National Environmental Policy Act
OEIS = Overseas Environmental Impact Statement
PACDERMA = Pacific Deep Electromagnetic Research Magnetic Array
PMRF = Pacific Missile Range Facility